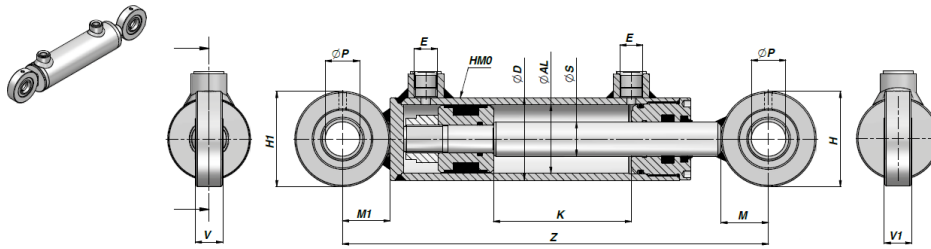


HMC

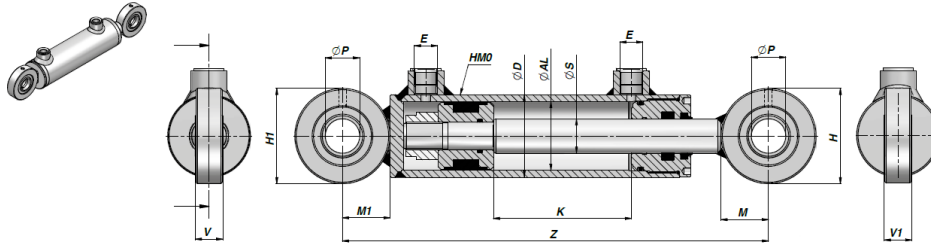
Dubbelwerkende Cilinder



Artikelnummer	Ø D	Ø AL	Ø S	K Slag	Z	Kg	E BSP	Ø P	H	V	M	H1	V1	M1
HMC032200050	42	32	20	50	195	1,45	1/4"	15	40	12	20	40	12	20
HMC032200100				100	245	1,80								
HMC032200150				150	295	2,15								
HMC032200200				200	345	2,50								
HMC032200250				250	395	2,85								
HMC032200300				300	445	3,20								
HMC032200400				400	545	3,90								
HMC032200500				500	645	4,60								
HMC1200100	50	40	20	100	280	2,63	1/4"	20	50	16	25	50	16	25
HMC1200150				150	330	3,03								
HMC1200200				200	380	3,43								
HMC1200250				250	430	3,83								
HMC1200300				300	480	4,23								
HMC1200350				350	530	4,63								
HMC1200400				400	580	5,03								
HMC1200450				450	630	5,43								
HMC1200500	500	680	5,83											
HMC1250100	50	40	25	100	280	2,80	1/4"	20	50	16	25	50	16	25
HMC1250150				150	330	3,23								
HMC1250200				200	380	3,74								
HMC1250250				250	430	4,21								
HMC1250300				300	480	4,68								
HMC1250350				350	530	5,15								
HMC1250400				400	580	5,62								
HMC1250450				450	630	6,09								
HMC1250500				500	680	6,55								
HMC1250550				550	730	7,02								
HMC1250600	600	780	7,49											
HMC2250100	60	50	25	100	309	4,24	3/8"	25	69	20	34,5	69	20	34,5
HMC2250150				150	359	4,27								
HMC2250200				200	409	5,30								
HMC2250250				250	459	5,82								
HMC2250300				300	509	6,36								
HMC2250350				350	559	6,88								
HMC2250400				400	609	7,41								
HMC2250450				450	659	7,94								
HMC2250500				500	709	8,47								
HMC2250550				550	759	9,00								
HMC2250600				600	809	9,53								
HMC2250700				700	909	10,65								
HMC2250800				800	1009	11,65								
HMC2251000				1000	1209	13,77								
HMC2300100	60	50	30	100	309	4,44	3/8"	25	69	20	34,5	69	20	34,5
HMC2300150				150	359	5,06								
HMC2300200				200	409	5,67								
HMC2300250				250	459	6,29								
HMC2300300				300	509	6,90								
HMC2300350				350	559	7,52								
HMC2300400				400	609	8,13								
HMC2300450				450	659	8,74								
HMC2300500				500	709	9,36								
HMC2300550				550	759	9,98								
HMC2300600				600	809	10,59								
HMC2300700				700	909	11,82								
HMC2300800				800	1009	13,05								
HMC2301000				1000	1209	15,50								
HMC3300100	70	60	30	100	329	5,83	3/8"	25	69	20	34,5	69	20	34,5
HMC3300150				150	379	6,50								
HMC3300200				200	429	7,18								
HMC3300250				250	479	7,86								
HMC3300300				300	529	8,53								
HMC3300350				350	579	9,21								
HMC3300400				400	629	9,88								
HMC3300450				450	679	10,56								
HMC3300500				500	729	11,23								
HMC3300550				550	779	11,91								
HMC3300600				600	829	12,58								
HMC3300700				700	929	14,04								
HMC3300800				800	1029	15,29								
HMC3301000				1000	1229	17,99								

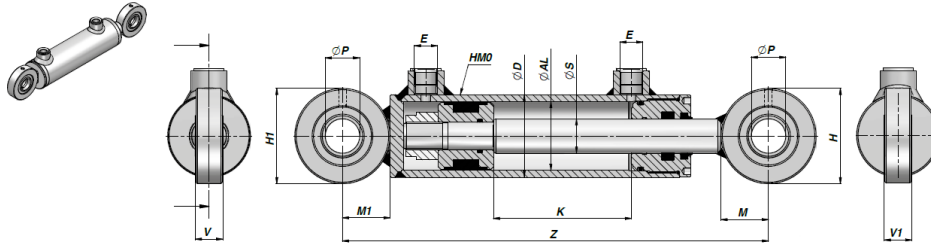
Product Specificaties	
Max werkdruk cilinder (Bar)	210
Max snelheid cilinder (m/s)	0,5
Temperatuur afdichtingen (°C)	-25 / +80

HMC Dubbelwerkende Cilinder



Artikelnummer	Ø D	Ø AL	Ø S	K Slag	Z	Kg	E BSP	Ø P	H	V	M	H1	V1	M1
HMC3350100	70	60	35	100	329	6,08	3/8"	25	69	20	34,5	69	20	34,5
HMC3350150				150	379	6,86								
HMC3350200				200	429	7,64								
HMC3350250				250	479	8,40								
HMC3350300				300	529	9,19								
HMC3350350				350	579	9,96								
HMC3350400				400	629	10,74								
HMC3350450				450	679	11,52								
HMC3350500				500	729	12,29								
HMC3350550				550	779	13,07								
HMC3350600				600	829	13,84								
HMC3350700				700	929	15,48								
HMC3350800				800	1029	16,95								
HMC3351000				1000	1229	20,05								
HMC3400200	70	60	40	200	429	8,26	3/8"	25	69	20	34,5	69	20	34,5
HMC3400250				250	479	9,17								
HMC3400300				300	529	10,06								
HMC3400350				350	579	10,95								
HMC3400400				400	629	11,84								
HMC3400450				450	679	12,73								
HMC3400500				500	729	13,63								
HMC3400550				550	779	14,52								
HMC3400600				600	829	15,41								
HMC3400700				700	929	17,28								
HMC3400800				800	1029	18,95								
HMC3401000	1000	1229	22,54											
HMC063400200	73	63	40	200	429	8,57	3/8"	25	69	20	34,5	69	20	34,5
HMC063400250				250	479	9,48								
HMC063400300				300	529	10,29								
HMC063400350				350	579	11,30								
HMC063400400				400	629	12,21								
HMC063400450				450	679	13,13								
HMC063400500				500	729	14,03								
HMC063400550				550	779	14,86								
HMC063400600				600	829	15,75								
HMC063400700				700	929	17,68								
HMC063400800				800	1029	19,48								
HMC063401000	1000	1229	23,13											
HMC4350100	80	70	35	100	335	7,25	3/8"	30	75	22	37,5	75	22	37,5
HMC4350150				150	385	8,09								
HMC4350200				200	435	8,95								
HMC4350250				250	485	9,76								
HMC4350300				300	535	10,60								
HMC4350350				350	585	11,46								
HMC4350400				400	635	12,27								
HMC4350450				450	685	13,13								
HMC4350500				500	735	13,95								
HMC4350550				550	785	14,81								
HMC4350600				600	835	15,64								
HMC4350700				700	935	17,43								
HMC4350800				800	1035	18,99								
HMC4351000				1000	1235	22,34								
HMC4400100	80	70	40	100	335	7,76	3/8"	30	75	22	37,5	75	22	37,5
HMC4400150				150	385	8,71								
HMC4400200				200	435	9,54								
HMC4400250				250	485	10,49								
HMC4400300				300	535	11,45								
HMC4400350				350	585	12,40								
HMC4400400				400	635	13,35								
HMC4400450				450	685	14,30								
HMC4400500				500	735	15,26								
HMC4400550				550	785	16,21								
HMC4400600				600	835	17,16								
HMC4400700				700	935	19,20								
HMC4400800				800	1035	20,97								
HMC4401000				1000	1235	24,78								

HMC Dubbelwerkende Cilinder



Artikelnummer	Ø D	Ø AL	Ø S	K Slag	Z	Kg	E BSP	Ø P	H	V	M	H1	V1	M1
HMC5400200	92	80	40	200	474	13,54	1/2"	40	94	28	47	94	28	47
HMC5400250				250	524	14,67								
HMC5400300				300	574	15,79								
HMC5400400				400	674	18,05								
HMC5400500				500	774	20,29								
HMC5400600				600	874	22,55								
HMC5400700				700	974	24,80								
HMC5400800				800	1074	27,05								
HMC5401000				1000	1274	31,55								
HMC5500200				92	80	50								
HMC5500250	250	524	16,09											
HMC5500300	300	574	17,50											
HMC5500400	400	674	20,30											
HMC5500500	500	774	23,11											
HMC5500600	600	874	25,92											
HMC5500700	700	974	28,72											
HMC5500800	800	1074	31,00											
HMC5501000	1000	1274	37,14											
HMC090500300	105	90	50				300	580	21,79	1/2"	40	94	28	47
HMC090500400				400	680	25,13								
HMC090500500				500	780	28,46								
HMC090500600				600	880	31,79								
HMC090500700				700	980	35,12								
HMC090500800				800	1080	38,46								
HMC090501000				1000	1280	45,12								
HMC6500200				115	100	50	200	530	24,79					
HMC6500250	250	580	26,55											
HMC6500300	300	630	28,30											
HMC6500400	400	730	31,00											
HMC6500500	500	830	35,34											
HMC6500600	600	930	38,86											
HMC6500700	700	1030	42,37											
HMC6500800	800	1130	45,78											
HMC6501000	1000	1330	52,93											
HMC090500300	115	100	60				300	630	30,46	1/2"	50	120	35	60
HMC090500400				400	730	34,65								
HMC090500500				500	830	38,84								
HMC090500600				600	930	43,04								
HMC090500700				700	1030	47,23								
HMC090500800				800	1130	51,00								
HMC090501000				1000	1330	59,82								