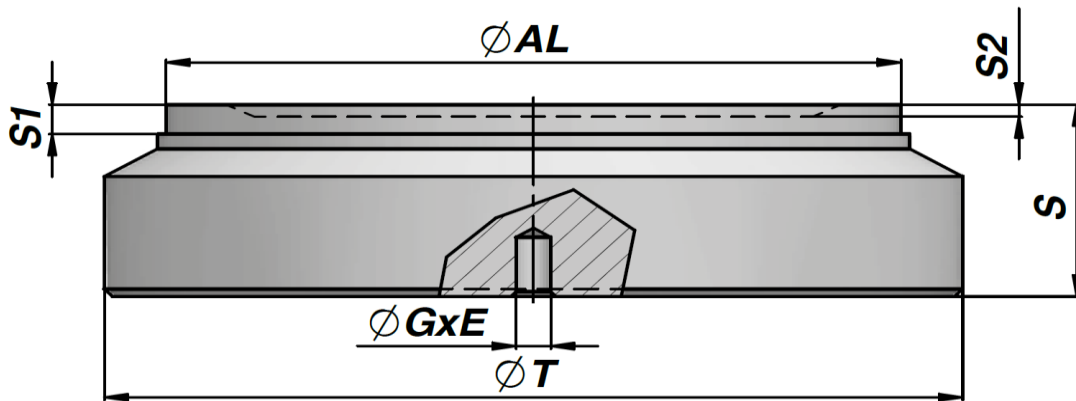


CFPM

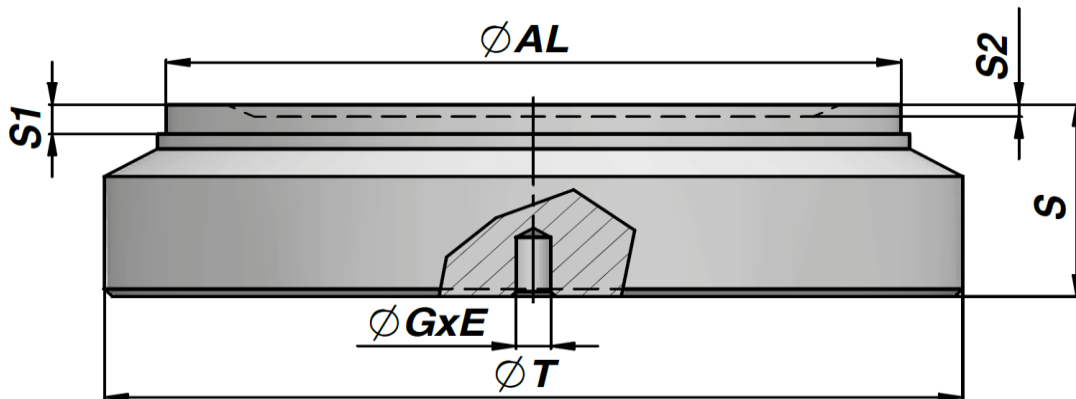
Cilinderbodem hoge-druk



Artikelnummer	$\varnothing AL$	$\varnothing T$	S	S1	S2	$\varnothing G \times E$	Kg
CFPM060050017	50	60	17	4	2	$\varnothing 4,25 \times 6$	0,31
CFPM065050017	50	65	17	4	-	$\varnothing 4,25 \times 6$	0,36
CFPM065050020	50	65	20	2	-	$\varnothing 4,25 \times 6$	0,46
CFPM070060019	60	70	19	4	2	$\varnothing 4,25 \times 6$	0,50
CFPM075060019	60	75	19	4	-	$\varnothing 4,25 \times 6$	0,56
CFPM075060020	60	75	20	2	-	$\varnothing 4,25 \times 6$	0,62
CFPM075063019	63	75	19	4	-	$\varnothing 4,25 \times 6$	0,59
CFPM075063022	63	75	22	2	-	$\varnothing 4,25 \times 6$	0,71
CFPM080070022	70	80	22	4	2	$\varnothing 4,25 \times 6$	0,77
CFPM085070022	70	85	22	4	2	$\varnothing 4,25 \times 6$	0,84
CFPM085070028	70	85	28	2	-	$\varnothing 4,25 \times 6$	1,18
CFPM090075022	75	90	22	4	-	$\varnothing 4,25 \times 6$	0,98
CFPM095080025	80	95	25	4	2	$\varnothing 4,25 \times 6$	1,22
CFPM100080025	80	100	25	4	2	$\varnothing 4,25 \times 6$	1,31
CFPM100080030	80	100	30	2	-	$\varnothing 4,25 \times 6$	1,71
CFPM100085025	85	100	25	4	-	$\varnothing 4,25 \times 6$	1,41
CFPM105090026	90	105	26	4	-	$\varnothing 4,25 \times 6$	1,63
CFPM110090026	90	110	26	4	-	$\varnothing 4,25 \times 6$	1,73
CFPM110090035	90	110	35	2	-	$\varnothing 4,25 \times 6$	2,45
CFPM115100030	100	115	30	4	2	$\varnothing 6,25 \times 8$	2,22
CFPM120100030	100	120	30	4	2	$\varnothing 6,25 \times 8$	2,36
CFPM120100035	100	120	35	2	-	$\varnothing 6,25 \times 8$	2,93

CFPM

Cilinderbodem hoge-druk



Artikelnummer	$\varnothing AL$	$\varnothing T$	S	S1	S2	$\varnothing G \times E$	Kg
CFPM125110031	110	125	31	7	-	$\varnothing 6,25 \times 8$	2,74
CFPM130110031	110	130	31	7	-	$\varnothing 6,25 \times 8$	2,87
CFPM130110038	110	130	38	2	-	$\varnothing 6,25 \times 8$	3,77
CFPM140120034	120	140	34	7	-	$\varnothing 6,25 \times 8$	3,72
CFPM145120034	120	145	34	7	-	$\varnothing 6,25 \times 8$	3,87
CFPM145120042	120	145	42	2	-	$\varnothing 6,25 \times 8$	5,15
CFPM145125035	125	145	35	7	-	$\varnothing 6,25 \times 8$	4,13
CFPM145125045	125	145	45	2	-	$\varnothing 6,25 \times 8$	5,62
CFPM150125035	125	150	35	7	-	$\varnothing 6,25 \times 8$	4,30
CFPM160140040	140	160	40	7	-	$\varnothing 6,25 \times 8$	5,86
CFPM165140050	140	165	50	2	-	$\varnothing 6,25 \times 8$	8,06
CFPM170140040	140	170	40	7	-	$\varnothing 6,25 \times 8$	6,34
CFPM170150042	150	170	42	7	-	$\varnothing 6,25 \times 8$	7,00
CFPM180150042	150	180	42	7	-	$\varnothing 6,25 \times 8$	7,55
CFPM180150060	150	180	60	2	-	$\varnothing 6,25 \times 8$	11,51
CFPM180160045	160	180	45	7	-	$\varnothing 6,25 \times 8$	8,48
CFPM190160045	160	190	45	10	-	$\varnothing 6,25 \times 8$	8,72
CFPM190160065	160	190	65	2	-	$\varnothing 6,25 \times 8$	13,96