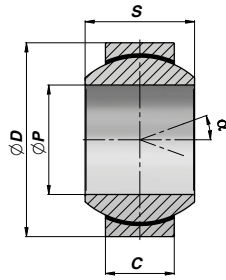
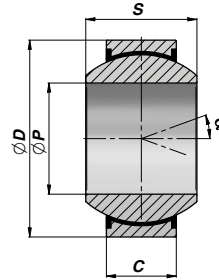


SNODO SFERICO RADIALE NON RICHIEDENTE MANUTENZIONE
MAINTENANCE FREE RADIAL BALL-JOINT
GE FW/GE FW2RS


TYPE FW



TYPE FW...2RS



| Codice Code Type FW | Codice Code Type FW...2RS | ØP | ØD | S | C | α | FC (kN) | kg |
|---------------------|---------------------------|-----|-----|-----|-----|----|---------|-------|
| CGE0003503 | | 12 | 26 | 15 | 9 | 18 | 17.6 | 0,03 |
| CGE0003504 | | 15 | 30 | 16 | 10 | 16 | 22.4 | 0,04 |
| CGE0003505 | | 17 | 35 | 20 | 12 | 19 | 31.5 | 0,07 |
| CGE0003506 | | 20 | 42 | 25 | 16 | 17 | 51.0 | 0,15 |
| CGE0003507 | | 25 | 47 | 28 | 18 | 17 | 65.5 | 0,19 |
| CGE0003508 | CGE0003550 | 30 | 55 | 32 | 20 | 17 | 210.0 | 0,29 |
| | CGE0003551 | 35 | 62 | 35 | 22 | 16 | 275.0 | 0,39 |
| | CGE0003552 | 40 | 68 | 40 | 25 | 17 | 360.0 | 0,52 |
| | CGE0003553 | 45 | 75 | 43 | 28 | 15 | 440.0 | 0,68 |
| | CGE0003554 | 50 | 90 | 56 | 36 | 17 | 690.0 | 1,40 |
| | CGE0003555 | 60 | 105 | 63 | 40 | 17 | 885.0 | 2,00 |
| | CGE0003556 | 70 | 120 | 70 | 45 | 16 | 1125.0 | 2,90 |
| | CGE0003557 | 80 | 130 | 75 | 50 | 14 | 1380.0 | 3,50 |
| | CGE0003558 | 90 | 150 | 85 | 55 | 15 | 1720.0 | 5,40 |
| | CGE0003559 | 100 | 160 | 85 | 55 | 14 | 1840.0 | 5,90 |
| | CGE0003560 | 110 | 180 | 100 | 70 | 12 | 2685.0 | 9,70 |
| | CGE0003561 | 120 | 210 | 115 | 70 | 16 | 3015.0 | 15,00 |
| | CGE0003562 | 140 | 230 | 130 | 80 | 16 | 3845.0 | 18,50 |
| | CGE0003563 | 160 | 260 | 135 | 80 | 16 | 4320.0 | 25,00 |
| | CGE0003564 | 180 | 290 | 155 | 100 | 14 | 6000.0 | 35,50 |
| | CGE0003565 | 200 | 320 | 165 | 100 | 15 | 6600.0 | 45,00 |

FC = CARICO DINAMICO AMMESSO - MAX DYNAMIC LOAD

CGE...FW = ACCOPPIAMENTO - COUPLING : ACCIAIO SU BRONZO SINTERIZZATO/PTFE - STEEL ON SINTERED BRONZE/PTFE

CGE...FW2RS = ACCOPPIAMENTO - COUPLING : CROMO DURO/PTFE - HARD CHROMIUM/PTFE

MATERIALE : ACCIAIO ISO 12240-1 SERIE G

MATERIAL : STEEL ISO 12240-1 SERIES G