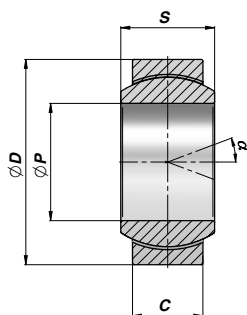
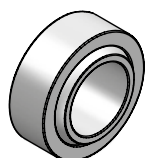
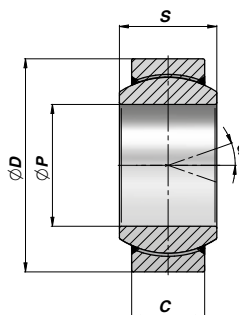


GE UK/GE UK2RS

**SNODO SFERICO RADIALE NON RICHIEDENTE MANUTENZIONE
MAINTENANCE FREE RADIAL BALL-JOINT**



TYPE UK



TYPE UK...2RS

Codice Code Type UK	Codice Code Type UK...2RS	ØP	ØD	S	C	α	FC Type UK (kN)	FC Type UK2RS (kN)	kg
CGE0001518 NEW!		12	22	10	7	11	11.4		0,01
CGE0001519 NEW!		15	26	12	9	8	17.6		0,02
CGE0001520 NEW!	CGE0001525	17	30	14	10	10	22.4	48	0,03
CGE0001521	CGE0001526	20	35	16	12	9	31.5	68	0,06
CGE0001522	CGE0001527	25	42	20	16	7	51.0	130	0,11
CGE0001523	CGE0001528	30	47	22	18	6	65.5	170	0,14
	CGE0001529	35	55	25	20	6		220	0,22
	CGE0001530	40	62	28	22	7		280	0,30
	CGE0001531	45	68	32	25	7		360	0,40
	CGE0001532	50	75	35	28	6		440	0,54
	CGE0001533	60	90	44	36	6		690	1,00
	CGE0001534	70	105	49	40	6		880	1,50
	CGE0001535	80	120	55	45	6		1135	2,20
	CGE0001536	90	130	60	50	5		1375	2,70
	CGE0001537	100	150	70	55	7		1725	4,30
	CGE0001538	110	160	70	55	6		1860	4,70
	CGE0001539	120	180	85	70	6		2700	8,00
	CGE0001540 NEW!	140	210	90	70	7		3010	11,00
	CGE0001541 NEW!	160	230	105	80	8		3840	13,50
	CGE0001542 NEW!	180	260	105	80	6		4320	18,50
	CGE0001543 NEW!	200	290	130	100	7		6000	28,00

FC = CARICO DINAMICO AMMESSO - MAX DYNAMIC LOAD

CGE...UK = ACCOPPIAMENTO - COUPLING : ACCIAIO SU BRONZO SINTERIZZATO/PTFE - STEEL ON SINTERED BRONZE/PTFE

CGE...UK2RS = ACCOPPIAMENTO - COUPLING : CROMO DURO/PTFE - HARD CHROMIUM/PTFE

MATERIALE : ACCIAIO ISO 12240-1 SERIE E

MATERIAL : STEEL ISO 12240-1 SERIES E