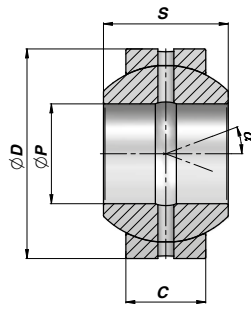
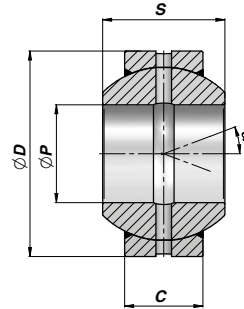
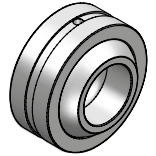


SNODO SFERICO RADIALE RICHIEDENTE MANUTENZIONE
RADIAL BALL-JOINT REQUIRING MAINTENANCE
GE FO/GE FO2RS


TYPE FO



TYPE FO...2RS



Codice Code Type FO	Codice Code Type FO...2RS	ØP	ØD	S	C	α	FC (kN)	kg
*CGE0001474 NEW!		12	26	15	9	18	17.0	0,03
CGE0001475 NEW!	CGE0001495	15	30	16	10	16	21.2	0,04
CGE0001476 NEW!	CGE0001496	17	35	20	12	19	30.0	0,07
CGE0001477	CGE0001497	20	42	25	16	17	48.0	0,15
CGE0001478	CGE0001498	25	47	28	18	17	62.0	0,19
CGE0001479	CGE0001499	30	55	32	20	17	80.0	0,29
CGE0001480	CGE0001500	35	62	35	22	16	100.0	0,39
CGE0001481	CGE0001501	40	68	40	25	17	127.0	0,52
CGE0001482	CGE0001502	45	75	43	28	15	156.0	0,68
CGE0001483	CGE0001503	50	90	56	36	17	245.0	1,40
CGE0001484	CGE0001504	60	105	63	40	17	315.0	2,00
CGE0001485	CGE0001505	70	120	70	45	16	400.0	2,90
CGE0001486	CGE0001506	80	130	75	50	14	490.0	3,50
CGE0001487 NEW!	CGE0001507	90	150	85	55	15	610.0	5,40
CGE0001488 NEW!	CGE0001508	100	160	85	55	14	655.0	5,90
CGE0001489 NEW!	CGE0001509	110	180	100	70	12	950.0	9,70
CGE0001490 NEW!	CGE0001510	120	210	115	70	16	1080.0	15,00
CGE0001491 NEW!	CGE0001511	140	230	130	80	16	1370.0	18,50
CGE0001492 NEW!	CGE0001512	160	260	135	80	16	1530.0	25,00
CGE0001493 NEW!	CGE0001513	180	290	155	100	14	2120.0	35,50

FC = CARICO DINAMICO AMMESSO - MAX DYNAMIC LOAD

* = NON RILUBRIFICABILE - WITHOUT GREASE NIPPLE

ACCOPPAMENTO - COUPLING : ACCIAIO/ACCIAIO - STEEL/STEEL

MATERIALE : ACCIAIO ISO 12240-1 SERIE G

MATERIAL : STEEL ISO 12240-1 SERIES G