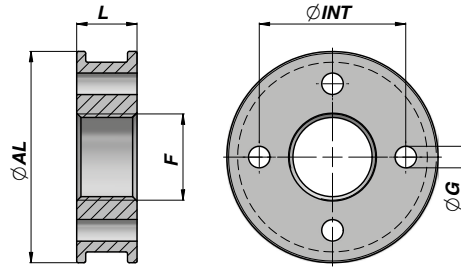
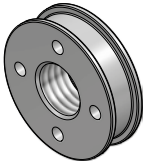


CTTB

PISTONE DI GUIDA PER CILINDRO TUFFANTE
PISTON FOR PLUNGER CYLINDER

Series M250



Codice Code	ØAL	F	L	ØG	ØINT	kg	Confezione Box	Pz Pcs	Set guarnizioni Seal kits
CTTB0301215	30	M12x1.5	14	ø 3 x 4	20	0,05	Z50CTTB0301215	50	GKGCTTB03012
CTTB0351415	35	M14x1.5	14	ø 4 x 4	23	0,07	Z50CTTB0351415	50	GKGCTTB03514
CTTB0401415	40	M14x1.5	14	ø 4 x 4	27	0,10	Z50CTTB0401415	50	GKGCTTB04014
CTTB0451615	45	M16x1.5	14	ø 4 x 4	32	0,13	Z50CTTB0451615	50	GKGCTTB04516
CTTB0502015	50	M20x1.5	14	ø 5 x 4	34	0,14	Z50CTTB0502015	50	GKGCTTB05020
CTTB0552015	55	M20x1.5	18	ø 5 x 4	38	0,23	Z50CTTB0552015	50	GKGCTTB05520
CTTB0602015	60	M20x1.5	18	ø 6 x 4	42	0,29	Z50CTTB0602015	50	GKGCTTB06020
CTTB0702420	70	M24x2	20	ø 7 x 4	50	0,45	Z50CTTB0702420	50	GKGCTTB07024
CTTB0802720	80	M27x2	20	ø 7 x 4	60	0,61	Z40CTTB0802720	40	GKGCTTB08027
CTTB0852720	85	M27x2	20	ø 7 x 4	65	0,71	Z20CTTB0852720	20	GKGCTTB08527
CTTB0903320	90	M33x2	22	ø 7 x 6	68	0,84	Z20CTTB0903320	20	GKGCTTB09033
CTTB1003320	100	M33x2	22	ø 8 x 6	76	1,08	Z20CTTB1003320	20	GKGCTTB10033
CTTB1103930	110	M39x3	22	ø 8 x 6	86	1,30	Z15CTTB1103930	15	GKGCTTB11039
CTTB1203930	120	M39x3	22	ø 10 x 6	93	1,57	Z10CTTB1203930	10	GKGCTTB12039

MATERIALE : ACCIAIO 9SMn28 -UNI C40
MATERIAL : STEEL 9SMn28 - UNI C40

GUARNIZIONI : VEDI PAGINA 86
SEALS : SEE PAGE 86