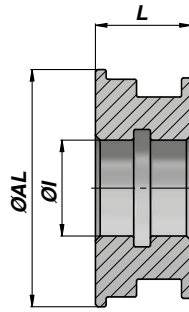
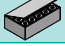



PISTONE PER CILINDRO SEMPLICE EFFETTO
PISTON FOR SINGLE ACTING CYLINDER
CTSE
Series M250


Codice Code	ØAL	ØI	L	kg	Confezione Box	 Pz Pcs	Set guarnizioni Seal kits	
CTSE040015	40	15	20	0,11	Z00CTSE040015	100	GKGCTSE040015	
CTSE050020	50	20	25	0,21	Z50CTSE050020	50	GKGCTSE050020	
CTSE060020	60	20	25	0,35	Z25CTSE060020	25	GKGCTSE060020	
CTSE063024	63	24	25	0,35	Z25CTSE063024	25	GKGCTSE063024	
CTSE070027	70	27	28	0,45	Z25CTSE070027	25	GKGCTSE070027	
CTSE080027	80	27	28	0,66	Z20CTSE080027	20	GKGCTSE080027	
CTSE090033	90	33	30	0,93	Z20CTSE090033	20	GKGCTSE090033	
CTSE100033	100	33	30	1,23	Z10CTSE100033	10	GKGCTSE100033	

MATERIALE : ACCIAIO 9SMn28 - UNI C40
 MATERIAL : STEEL 9SMn28 - UNI C40

GUARNIZIONI : VEDI PAGINA 84
 SEALS : SEE PAGE 84