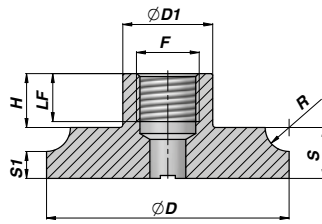
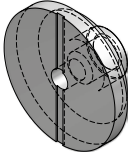










CHMSCFI

FONDELLO CON ENTRATA OLIO
END PLUG WITH INLET PORT



Codice Code	ØAL	ØD	S	S1	R	F BSP	LF	H	ØD1	kg	Confezione Box		Pz Pcs
CHMSCFI040	40	41	12	7.0	5.0	3/8"	15	17	25	0,14	Z00CHMSCFI040		100
CHMSCFI050	50	51	12	5.0	7.0	3/8"	15	17	25	0,18	Z50CHMSCFI050		50
CHMSCFI060	60	61	15	4.0	8.0	3/8"	15	17	25	0,31	Z50CHMSCFI060		50
CHMSCFI070	70	71	15	7.5	7.5	1/2"	16	18	30	0,44	Z50CHMSCFI070		50
CHMSCFI080	80	81	17	9.0	8.0	1/2"	16	18	30	0,64	Z20CHMSCFI080		20
CHMSCFI090	90	91	17	9.0	8.0	1/2"	16	18	30	0,80	Z20CHMSCFI090		20
CHMSCFI100	100	101	20	10.0	10.0	1/2"	16	18	30	1,11	Z10CHMSCFI100		10

MATERIALE : ACCIAIO S355J0 (Fe510C) - S355JR (A105)

MATERIAL : STEEL S355J0 (Fe510C) - S355JR (A105)