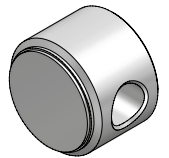
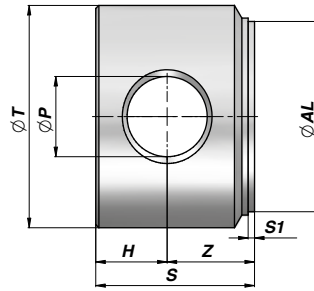


FONDELLO CON FORO
END PLUG WITH HOLE

CFO



| Codice Code | ØAL | ØT | ØP | Z | H | S | S1 | kg | Confezione Box | Pz Pcs |
|----------------|-----|-----|-------|------|------|----|----|------|-------------------|-----------|
| CF04005016 | 40 | 50 | 16.20 | 20.0 | 15.0 | 35 | 2 | 0.42 | Z50CF04005016 | 50 |
| CF05006020 | 50 | 60 | 20.25 | 25.0 | 20.0 | 45 | 2 | 0.80 | Z20CF05006020 | 20 |
| CF06007025 | 60 | 70 | 25.25 | 27.5 | 22.5 | 50 | 2 | 1.20 | Z20CF06007025 | 20 |
| CF07008025 | 70 | 80 | 25.25 | 27.5 | 22.5 | 50 | 2 | 1.60 | Z10CF07008025 | 10 |
| CF08009530 | 80 | 95 | 30.25 | 35.0 | 25.0 | 60 | 2 | 2.70 | Z05CF08009530 | 5 |
| CF10011535 | 100 | 115 | 35.25 | 40.0 | 30.0 | 70 | 2 | 4.70 | Z05CF10011535 | 5 |

MATERIALE : ACCIAIO S355J0 (Fe510C) - S355JR (A105)

MATERIAL : STEEL S355J0 (Fe510C) - S355JR (A105)