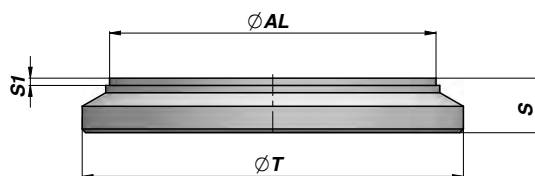
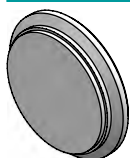


CF



Codice Code	ØAL	ØT	S	S1	kg	Confezione Box	Pz Pcs
CF00025035	25	35	7	2	0,04	Z0CCF00025035	250
CF00030040	30	40	8	2	0,06	Z0CCF00030040	250
CF00032042	32	42	8	2	0,10	Z0CCF00032042	250
CF00035045	35	45	10	2	0,11	Z0BCF00035045	200
CF00040050	40	50	10	2	0,13	Z0ACF00040050	150
CF00045055	45	55	10	2	0,16	Z00CF00045055	100
CF00050060	50	60	10	2	0,19	Z00CF00050060	100
CF00055065	55	65	12	2	0,28	Z50CF00055065	50
CF00060070	60	70	12	2	0,33	Z50CF00060070	50
CF00063073	63	73	12	2	0,35	Z50CF00063073	50
CF00065075	65	75	12	2	0,38	Z50CF00065075	50
CF00065080	65	80	12	2	0,40	Z50CF00065080	50
CF00070080	70	80	12	2	0,43	Z50CF00070080	50
CF00070085	70	85	12	2	0,45	Z25CF00070085	25
CF00075090	75	90	12	2	0,53	Z25CF00075090	25
CF00080090	80	90	12	2	0,55	Z25CF00080090	25
CF00080095	80	95	12	2	0,58	Z25CF00080095	25
CF00085100	85	100	15	2	0,77	Z25CF00085100	25
CF00090105	90	105	15	2	0,86	Z25CF00090105	25
CF00100115	100	115	15	2	1,05	Z25CF00100115	25
CF00110125	110	125	15	2	1,34	Z15CF00110125	15
CF00110130	110	130	15	2	1,40	Z15CF00110130	15
CF00120140	120	140	18	2	2,00	Z10CF00120140	10
CF00125145	125	145	18	2	2,11	Z10CF00125145	10
CF00140160	140	160	18	2	2,67		
CF00150170	150	170	20	2	3,33		
CF00160180	160	180	20	2	3,79		

MATERIALE : ACCIAIO S355J0 ( Fe510C ) - S355JR ( A105 )

MATERIAL : STEEL S355J0 ( Fe510C ) - S355JR ( A105 )

QUESTI FONDELLI POSSONO FLETTERE SE SOTTOPOSTI A PICCHI DI PRESSIONE.

RACCOMANDIAMO DI SALDARE QUALCHE TERMINALE PER AUMENTARNE LA RIGIDITÀ OPPURE UTILIZZARE I FONDELLI INTERNI TIPO "CFI"

THESE PLUGS CAN BEND UNDER PEAK PRESSURE.

WE RECOMMEND TO WELD ENDS TO ACHIEVE EXTRA RIGIDITY OTHERWISE USE INTERNAL END PLUGS "CFI" TYPE.

PER CONDIZIONI DI LAVORO A CICLO CONTINUO UTILIZZARE I FONDELLI "CFPM"

IN CASE OF CONTINUOUS WORK PLEASE USE "CFPM" END PLUGS.