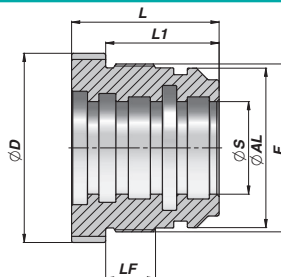
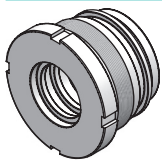


C200

Codice Code Bestell-Nr.	ØAL	ØS	ØD	F	LF	L	L1	kg	Confezione Box Verpackung	Pz Pcs Stk	Set guarnizioni Seal kits Dichtsätze
CGLM049040020	40	20	49	M44x1,5	11	33	26	0,22	Z50CGLM040020	50	GKGCGLM040020
CGLM049040025	40	25	"	"	"	"	"	0,18	Z50CGLM040025	50	GKGCGLM040025
CGLM059050025	50	25	59	M,54x1,5	13	36	28	0,38	Z25CGLM050025	25	GKGCGLM050025
CGLM059050030	50	30	"	"	"	"	"	0,31	Z25CGLM050030	25	GKGCGLM050030
CGLM069060030	60	30	69	M64x1,5	16	41	33	0,62	Z25CGLM060030	25	GKGCGLM060030
CGLM069060035	60	35	"	"	"	"	"	0,53	Z25CGLM060035	25	GKGCGLM060035
CGLM079070035	70	35	79	M74x1,5	16	41	33	0,84	Z20CGLM070035	20	GKGCGLM070035
CGLM079070040	70	40	"	"	"	"	"	0,73	Z20CGLM070040	20	GKGCGLM070040
CGLM092080040	80	40	92	M85x2	18	46	36	1,25	Z10CGLM080040	10	GKGCGLM080040
CGLM092080050	80	50	"	M85x2	"	"	"	1,00	Z10CGLM080050	10	GKGCGLM080050
CGLM114100050	100	50	114	M105x2	22	55	45	2,30	Z10CGLM100050	10	GKGCGLM100050
CGLM114100060	100	60	"	M105x2	"	"	"	1,95	Z10CGLM100060	10	GKGCGLM100060

MATERIALE - MATERIAL:
GHISA OLEODINAMICA - HYDRAULIC CAST IRON - HYDRAULIKGUSS UNI 5007-G25

GUARNIZIONI: VEDI PAGINA 92
SEALS: SEE PAGE 92 - DICHTUNGEN: SIEHE SEITE 92



P350

Codice Code Bestell-Nr.	ØAL	ØS	ØD	F	LF	L	L1	kg	Confezione Box Verpackung	Pz Pcs Stk	Set guarnizioni Seal kits Dichtsätze
NEW! CGPM065050025	50	25	64	M54x1,5	22	55	45	0,66	Z25CGPM050025	25	GKGCGLM050025
NEW! CGPM065050030	50	30	"	"	"	"	"	0,55	Z25CGPM050030	25	GKGCGLM050030
NEW! CGPM065050035	50	35	"	"	"	"	"	0,41	Z25CGPM050035	25	GKGCGLM050035
NEW! CGPM075060030	60	30	74	M64x1,5	22	60	48	0,99	Z20CGPM060030	20	GKGCGLM060030
NEW! CGPM075060035	60	35	"	"	"	"	"	0,86	Z20CGPM060035	20	GKGCGLM060035
CGPM075060040	60	40	"	"	"	"	"	0,70	Z20CGPM060040	20	GKGCGLM060040
CGPM085070040	70	40	84	M74x1,5	22	65	50	1,27	Z05CGPM070040	5	GKGCGLM070040
CGPM100080045	80	45	94	M85x2	25	75	60	1,95	Z05CGPM080045	5	GKGCGLM080045
CGPM100080050	80	50	"	"	"	"	"	1,70	Z05CGPM080050	5	GKGCGLM080050
CGPM110090045	90	45	109	M95x2	25	75	60	2,80	Z05CGPM090045	5	GKGCGLM090045
CGPM110090050	90	50	"	"	"	"	"	2,57	Z05CGPM090050	5	GKGCGLM090050
NEW! CGPM110090060	90	60	"	"	"	"	"	2,00	Z05CGPM090060	5	GKGCGLM090060
NEW! CGPM120100045	100	45	119	M105x2	25	75	60	3,80	Z05CGPM100045	5	GKGCGLM100045
CGPM120100050	100	50	"	"	"	"	"	3,45	Z05CGPM100050	5	GKGCGLM100050
CGPM120100060	100	60	"	"	"	"	"	2,90	Z05CGPM100060	5	GKGCGLM100060
CGPM130110050	110	50	129	M115x2	30	85	70	5,00			GKGCGLM110050
CGPM130110060	110	60	"	"	"	"	"	4,42			GKGCGLM110060
CGPM140120060	120	60	139	M125x2	30	85	70	5,70			GKGCGLM120060
CGPM140120070	120	70	"	"	"	"	"	4,90			GKGCGLM120070
CGPM140120080	120	80	"	"	"	"	"	3,96			GKGCGLM120080
NEW! CGPM145125070	125	70	144	M130x2	39	90	75	5,99			GKGCGLM125070
NEW! CGPM145125080	125	80	"	"	"	"	"	4,95			GKGCGLM125080
NEW! CGPM160140080	140	80	159	M145x2	40	90	75	7,20			GKGCGLM140080
NEW! CGPM160140090	140	90	"	"	"	"	"	6,21			GKGCGLM140090
NEW! CGPM160140100	140	100	"	"	"	"	"	5,00			GKGCGLM140100
NEW! CGPM170150080	150	80	169	M155x2	46	100	85	9,85			GKGCGLM150080
NEW! CGPM170150090	150	90	"	"	"	"	"	8,73			GKGCGLM150090
NEW! CGPM170150100	150	100	"	"	"	"	"	7,49			GKGCGLM150100
CGPM180160100	160	100	179	M165x2	46	100	85	9,40			GKGCGLM160100
CGPM180160120	160	120	"	"	"	"	"	6,40			GKGCGLM160120

MATERIALE - MATERIAL:
ACCIAIO - STEEL - STAHL: UNI C40

GUARNIZIONI: VEDI PAGINA 92
SEALS: SEE PAGE 92 - DICHTUNGEN: SIEHE SEITE 92