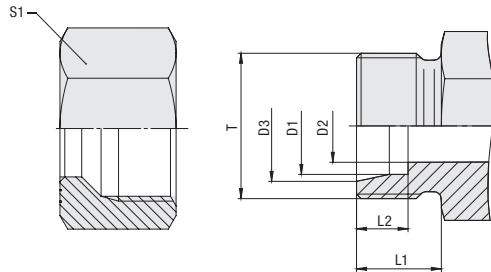


Dimensions of the 24° Conical Bore / Union Nut



Series	Tube OD		Dimensions						
	(mm/in)	(mm/in)	(mm/in)						
	D1	Thread T	D2	D3	L1	L2	S1		
LL	4	M 8 x 1	3	5	8	4	10		
	.16		.12	.20	.31	.16	.39		
	6	M 10 x 1	4,5	7,5	8	5,5	12		
	.24		.18	.30	.31	.22	.47		
L	8	M 12 x 1,5	6	9,5	9	5,5	14		
	.31		.24	.37	.35	.22	.55		
	6	M 12 x 1,5	4	8,1	10	7	14		
	.24		.16	.32	.39	.28	.55		
	8	M 14 x 1,5	6	10,1	10	7	17		
	.31		.24	.40	.39	.28	.67		
	10	M 16 x 1,5	8	12,3	11	7	19		
	.39		.31	.48	.43	.28	.75		
	12	M 18 x 1,5	10	14,3	11	7	22		
	.47		.39	.56	.43	.28	.87		
	15	M 22 x 1,5	12	17,3	12	7	27		
	.59		.47	.68	.47	.28	1.06		
	18	M 26 x 1,5	15	20,3	12	7,5	32		
	.71		.59	.80	.47	.30	1.26		
	22	M 30 x 2	19	24,3	14	7,5	36		
	.87		.75	.96	.55	.30	1.42		
	28	M 36 x 2	24	30,3	14	7,5	41		
	1.10		.94	1.19	.55	.30	1.61		
	35	M 45 x 2	30	38	16	10,5	50		
	1.38		1.18	1.50	.63	.41	1.97		
42	M 52 x 2	36	45	16	11	60			
1.65		1.42	1.77	.63	.43	2.36			
S	6	M 14 x 1,5	4	8,1	12	7	17		
	.24		.16	.32	.47	.28	.67		
	8	M 16 x 1,5	5	10,1	12	7	19		
	.31		.20	.40	.47	.28	.75		
	10	M 18 x 1,5	7	12,3	12	7,5	22		
	.39		.28	.48	.47	.30	.87		
	12	M 20 x 1,5	8	14,3	12	7,5	24		
	.47		.31	.56	.47	.30	.94		
	14 ¹	M 22 x 1,5	10	16,3	14	8	27		
	.55 ¹		.39	.64	.55	.31	1.06		
	16	M 24 x 1,5	12	18,3	14	8,5	30		
	.63		.47	.72	.55	.33	1.18		
	20	M 30 x 2	16	22,9	16	10,5	36		
	.79		.63	.90	.63	.41	1.42		
	25	M 36 x 2	20	27,9	18	12	46		
	.98		.79	1.10	.71	.47	1.81		
30	M 42 x 2	25	33	20	13,5	50			
1.18		.98	1.30	.79	.53	1.97			
38	M 52 x 2	32	41	22	16	60			
1.50		1.26	1.61	.87	.63	2.36			

¹ Tube size is no longer covered by the applicable standard.