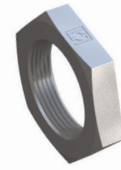
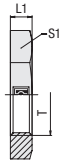


Hexagon Lock Nut
 Type FI-SKM • Series L / S


for Straight Bulkhead Fittings / Bulkhead Elbows

Series	Dimensions		Weight (^{kg} / _{lbs}) ca. per 100	Ordering Codes	
	(^{mm} / _{in}) Thread T	L1			S1
L	M 12 x 1,5	6	17	0,66	FI-SKM-06L-W3
		.24	.67	1.45	
	M 14 x 1,5	6	19	0,76	FI-SKM-08L/06S-W3
		.24	.75	1.67	
	M 16 x 1,5	6	22	1,04	FI-SKM-10L/08S-W3
		.24	.87	2.29	
	M 18 x 1,5	6	24	1,17	FI-SKM-12L/10S-W3
		.24	.94	2.62	
	M 22 x 1,5	7	30	2,25	FI-SKM-15L/14S-W3
		.28	1.18	4.95	
	M 26 x 1,5	8	36	3,75	FI-SKM-18L-W3
		.31	1.42	8.25	
	M 30 x 2	8	41	4,79	FI-SKM-22L/20S-W3
		.31	1.61	10.53	
M 36 x 2	9	46	5,90	FI-SKM-28L/25S-W3	
	.35	1.81	12.98		
M 45 x 2	9	55	7,60	FI-SKM-35L-W3	
	.35	2.17	16.72		
M 52 x 2	10	65	12,20	FI-SKM-42L/38S-W3	
	.39	2.56	26.84		
S	M 14 x 1,5	6	19	0,76	FI-SKM-08L/06S-W3
		.24	.75	1.67	
	M 16 x 1,5	6	22	1,04	FI-SKM-10L/08S-W3
		.24	.87	2.29	
	M 18 x 1,5	6	24	1,17	FI-SKM-12L/10S-W3
		.24	.94	2.57	
	M 20 x 1,5	6	27	1,54	FI-SKM-12S-W3
		.24	1.06	3.39	
	M 22 x 1,5	7	30	2,25	FI-SKM-15L/14S-W3
		.28	1.18	4.95	
	M 24 x 1,5	7	32	2,40	FI-SKM-16S-W3
		.28	1.26	5.28	
	M 30 x 2	8	41	4,79	FI-SKM-22L/20S-W3
		.31	1.61	10.54	
M 36 x 2	9	46	5,90	FI-SKM-28L/25S-W3	
	.35	1.81	12.98		
M 42 x 2	9	50	5,70	FI-SKM-30S-W3	
	.35	1.97	12.54		
M 52 x 2	10	65	12,20	FI-SKM-42L/38S-W3	
	.39	2.56	26.84		

Ordering Codes

***FI-SKM*-06*L*-W3**

* Hexagon Lock Nut for Bulkhead Fittings	FI-SKM
* Outside Tube Diameter D1 (in mm)	-06
* Series	Light Series L Heavy Series S
* Material Code	Steel, zinc/nickel-plated -W3

Please contact STAUFF for alternative materials and surface finishings.