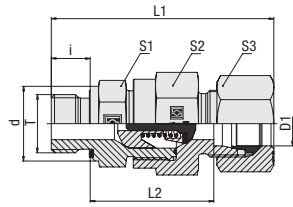
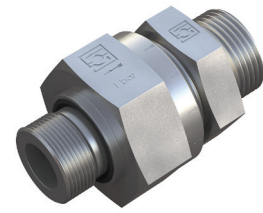
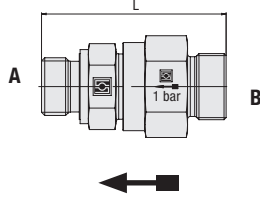


Male Stud Check Valve Type FI-RVZ...-M-WD • Series L / S



Flow Direction: B > A (to Stud End)
Standard Opening Pressure: 1 bar / 14.5 PSI



Profile Sealing Ring

Metric Parallel Thread

Series	Tube OD PN (mm/in)	Dimensions (mm/in)	Torque (N·m / ft·lb)	Weight (kg / lbs) ca.	Ordering Codes ³											
D1	Thread	T	d	L	L ¹	L ²	i	S ¹	S ²	S ³	Thread	T per 100 ²				
L	6	400	M 10 x 1	13,9	51	59	36	8	22	27	14	18	12,20	FI-RVZ-06LM-WD-B-W3-1		
	.24	5800		.55	2.01	2.32	1.42	.31	.87	1.06	.55	13.3	26.84			
	8	400	M 12 x 1,5	16,9	55	63	36	12	22	27	17	25	12,31		FI-RVZ-08LM-WD-B-W3-1	
	.31	5800		.67	2.17	2.48	1.42	.47	.87	1.06	.67	18.5	27.08			
	10	400	M 14 x 1,5	18,9	53	61	34	12	22	27	19	45	11,40		FI-RVZ-10LM-WD-B-W3-1	
	.39	5800		.74	2.09	2.40	1.34	.47	.87	1.06	.75	33.3	25.08			
	12	400	M 16 x 1,5	21,9	58	66	39	12	22	27	22	55	14,02		FI-RVZ-12LM-WD-B-W3-1	
	.47	5800		.86	2.28	2.60	1.54	.47	.87	1.06	.87	40.7	30.84			
	15	400	M 18 x 1,5	23,9	60	68	41	12	27	32	27	70	19,06		FI-RVZ-15LM-WD-B-W3-1	
	.59	5800		.94	2.36	2.68	1.61	.47	1.06	1.26	1.06	51.8	41.92			
	18	400	M 22 x 1,5	26,9	67	76	45,5	14	27	32	32	125	10,27		FI-RVZ-18LM-WD-B-W3-1	
	.71	5800		1.06	2.64	2.99	1.79	.55	1.06	1.26	1.26	92.5	22.59			
	22	250	M 26 x 1,5	31,9	78	87	54,5	16	46	41	36	180	46,73		FI-RVZ-22LM-WD-B-W3-1	
	.87	3625		1.26	3.07	3.43	2.15	.63	1.81	1.61	1.42	133.2	102.81			
	28	250	M 33 x 2	39,9	80	89	54,5	18	46	41	41	310	52,70		FI-RVZ-28LM-WD-B-W3-1	
	1.10	3625		1.57	3.15	3.50	2.15	.71	1.81	1.61	1.61	229.4	115.94			
	35	250	M 42 x 2	49,9	97,5	108,5	67	20	60	70	50	450	132,30		FI-RVZ-35LM-WD-B-W3-1	
	1.38	3625		1.96	3.84	4.27	2.64	.79	2.36	2.76	1.97	333.0	291.06			
	42	250	M 48 x 2	54,9	97,5	109,5	64,5	22	60	70	60	540	137,70		FI-RVZ-42LM-WD-B-W3-1	
	1.65	3625		2.16	3.84	4.31	2.54	.87	2.36	2.76	2.36	399.6	302.94			
	S	6	400	M 12 x 1,5	16,9	57	65	38	12	22	27	17	35		12,66	FI-RVZ-06SM-WD-B-W3-1
		.24	5800		.67	2.24	2.56	1.50	.47	.87	1.06	.67	25.9		27.85	
		8	400	M 14 x 1,5	18,9	55	63	36	12	22	27	19	55		12,21	FI-RVZ-08SM-WD-B-W3-1
		.31	5800		.74	2.17	2.48	1.42	.47	.87	1.06	.75	40.7		26.87	
		10	400	M 16 x 1,5	21,9	57	66	37,5	12	22	27	22	70		6,64	FI-RVZ-10SM-WD-B-W3-1
		.39	5800		.86	2.24	2.60	1.48	.47	.87	1.06	.87	51.8		14.61	
12		400	M 18 x 1,5	23,9	59	68	39,5	12	24	27	24	90	15,58	FI-RVZ-12SM-WD-B-W3-1		
.47		5800		.94	2.32	2.68	1.56	.47	.94	1.06	.94	66.6	34.28			
14		400	M 20 x 1,5	25,9	64	74	42	14	27	32	27	125	19,98	FI-RVZ-14SM-WD-B-W3-1		
.55		5800		1.02	2.52	2.91	1.65	.55	1.06	1.26	1.06	92.5	43.96			
16		400	M 22 x 1,5	26,9	67	77	44,5	14	27	32	30	135	21,94	FI-RVZ-16SM-WD-B-W3-1		
.63		5800		1.06	2.64	3.03	1.75	.55	1.06	1.26	1.18	99.9	48.26			
20		400	M 27 x 2	31,9	78	89	51,5	16	46	41	36	180	53,51	FI-RVZ-20SM-WD-B-W3-1		
.79		5800		1.26	3.07	3.50	2.03	.63	1.81	1.61	1.42	133.2	117.72			
25		250	M 33 x 2	39,9	83	95	53	18	46	41	46	310	53,10	FI-RVZ-25SM-WD-B-W3-1		
.98		3625		1.57	3.27	3.74	2.09	.71	1.81	1.61	1.81	229.4	116.82			
30		250	M 42 x 2	49,9	94	107	60,5	20	50	55	50	450	86,00	FI-RVZ-30SM-WD-B-W3-1		
1.18		3625		1.96	3.70	4.21	2.38	.79	1.97	2.17	1.97	333.0	189.20			
38		250	M 48 x 2	54,9	103,5	118,5	65,5	22	60	70	60	540	143,90	FI-RVZ-38SM-WD-B-W3-1		
1.50		3625		2.16	4.07	4.67	2.58	.87	2.36	2.76	2.36	399.6	316.58			

¹ Approximate dimension in assembled condition.

² Weight excluding cutting ring and union nut.

³ Standard scope of delivery: Valve body only.

Standard seal material is NBR (Buna-N®).

Please note: Internal seals are made of FKM (Viton®).

In order to make sure that the valves will be suitable for your particular application, please contact STAUFF with details on media, operating pressure, pressure peaks, operating temperature and the expected frequency of valve actuations.

Male stud acc. to ISO 9974-2 (Type E)

Port acc. to ISO 9974-1

Torque recommendations for Steel mating material.

Male threaded studs were designed for female threaded ports in components made of steel. For applications with components made of softer mating materials (e.g. Aluminium), the use of connectors with additionally rolled male threads is recommended.

Please contact STAUFF prior to the assembly for further information.

Ordering Codes

***FI-RVZ*-10*L*M*-WD*-B*-W3*-1*-MS**

* Male Stud Check Valve (Flow to Stud End) **FI-RVZ**

* Outside Tube Diameter D1 (in mm) **-10**

* Series Light Series **L**
Heavy Series **S**

* Thread Type Metric Parallel Thread **M**

If required, please indicate special sizes, e.g. M12x1.5!

* Seal Type Profile Sealing Ring **-WD**

* Seal Material NBR (Buna-N®) **-B**
FKM (Viton®) **-V**
EPDM **-E**

* Material Code Steel, zinc/nickel-plated **-W3**

Please contact STAUFF for alternative materials and surface finishings.

* Opening Pressure 1 bar / 14.5 PSI **1**

Contact STAUFF for alternative opening pressures.

* Assembling / Kitting Valve body only **—**

Valve body supplied with cutting ring and union nut **-MS**

Valve body supplied with soft-sealing cutting ring and union nut **-MSV**

Connecting Parts

Cutting Ring
Type **FI-DS**

Soft-Sealing Cutting Ring
Type **FI-WDD5**

Support Sleeve
Type **FI-VH**

STAUFF Form Ring
Type **FI-AR**

Union Nut
Type **FI-M**

37° Flared Tube Fitting Set
Type **FI-AB**

Spare Parts / Accessories

Profile Sealing Ring
Type **WDG**