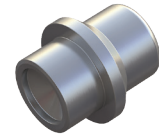
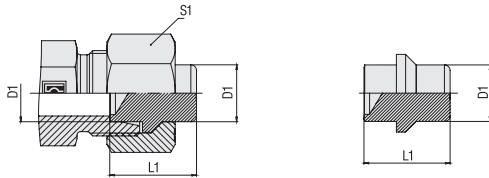


## Blanking Plug with Sealing Edge Type FI-BUZ • Series L / S



Series	Tube OD	PN (bar/PSI)	Dimensions		Weight (kg/lbs) ca. per 100 <sup>2</sup>	Ordering Codes <sup>3</sup>
	D1 (mm/in)		L1 <sup>1</sup> (mm/in)	S1		
L	6	500	19,5	14	0,55	FI-BUZ-06L/S-W3
	.24	7250	.77	.55	1.21	
	8	500	19,5	17	0,90	FI-BUZ-08L/S-W3
	.31	7250	.77	.67	1.98	
	10	500	21,5	19	1,48	FI-BUZ-10L/S-W3
	.39	7250	.85	.75	3.57	
	12	400	22	22	2,13	FI-BUZ-12L/S-W3
	.47	5800	.87	.87	4.69	
	15	400	22	27	3,20	FI-BUZ-15L-W3
	.59	5800	.87	1.06	7.04	
	18	400	24	32	5,00	FI-BUZ-18L-W3
	.71	5800	.94	1.26	11.00	
	22	250	26	36	7,90	FI-BUZ-22L-W3
	.87	3625	1.02	1.42	17.38	
	28	250	25,5	41	11,90	FI-BUZ-28L-W3
	1.10	3625	1.00	1.61	26.18	
	35	250	32	50	23,50	FI-BUZ-35L-W3
	1.38	3625	1.26	1.97	51.70	
	42	250	32,5	60	38,50	FI-BUZ-42L-W3
	1.65	3625	1.28	2.36	84.70	
S	6	800	19,5	17	0,55	FI-BUZ-06L/S-W3
	.24	11600	.77	.67	1.21	
	8	800	19,5	19	0,90	FI-BUZ-08L/S-W3
	.31	11600	.77	.75	1.98	
	10	800	21,5	22	1,48	FI-BUZ-10L/S-W3
	.39	11600	.85	.87	3.57	
	12	630	22	24	2,13	FI-BUZ-12L/S-W3
	.47	9135	.87	.94	4.69	
	14	630	23,5	27	3,12	FI-BUZ-14S-W3
	.55	9135	.93	1.06	6.86	
	16	630	25,5	30	4,27	FI-BUZ-16S-W3
	.63	9135	1.00	1.18	9.93	
	20	400	30,5	36	8,00	FI-BUZ-20S-W3
	.79	5800	1.20	1.42	17.60	
	25	400	32,5	46	17,90	FI-BUZ-25S-W3
	.98	5800	1.28	1.81	39.38	
	30	400	35,5	50	20,00	FI-BUZ-30S-W3
	1.18	5800	1.40	1.97	44.00	
	38	400	42	60	36,60	FI-BUZ-38S-W3
	1.50	5800	1.65	2.36	80.52	

<sup>1</sup> Approximate dimension in assembled condition.

<sup>2</sup> Weight excluding union nut.

<sup>3</sup> Standard scope of delivery: Blanking plug only.

### Ordering Codes

**\*FI-BUZ\*-10\*L\*-W3\*-M**

* Blanking Plug with Sealing Edge	<b>FI-BUZ</b>
* Outside Tube Diameter D1 (in mm)	<b>-10</b>
* Series	Light Series <b>L</b> Heavy Series <b>S</b>
* Material Code	Steel, zinc/nickel-plated <b>-W3</b>
Please contact STAUFF for alternative materials and surface finishings.	
* Assembling / Kitting	Blanking plug only <b>—</b> Blanking plug supplied with union nut <b>-M</b>

### Connecting Parts



Union Nut  
Type FI-M