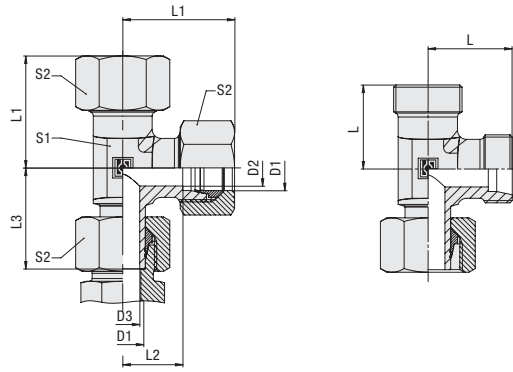
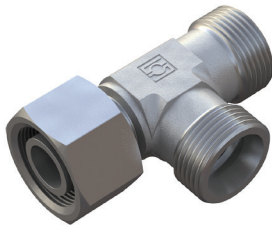


**Adjustable Standpipe Barrel Tee**  
Type FI-EL ▪ Series L / S



**Ordering Codes**

**\*FI-EL\*-10\*L\*-W3\*-SV-MS**

- \* Adjustable Standpipe Barrel Tee **FI-EL**
- \* Outside Tube Diameter D1 (in mm) **-10**
- \* Series **L**  
Light Series  
**S**  
Heavy Series
- \* Material Code **-W3**  
Steel, zinc/nickel-plated
- Please contact STAUFF for alternative materials and surface finishings.
- \* Assembling / Kitting **-SV**  
Fitting body assembled with cutting ring and union nut on the standpipe
- SV-MS**  
Fitting body assembled with cutting rings and union nuts on all ends

**Connecting Parts**

- Cutting Ring  
Type **FI-DS**
- Soft-Sealing Cutting Ring  
Type **FI-WDDS**
- Support Sleeve  
Type **FI-VH**
- STAUFF Form Ring  
Type **FI-AR**
- Union Nut  
Type **FI-M**
- 37° Flared Tube Fitting Set  
Type **FI-AB**

Series	Tube OD	PN	Dimensions								Weight (kg/lbs) ca. per 100 <sup>2</sup>	Ordering Codes <sup>3</sup>
	(mm/in) D1		(bar/psi)	(mm/in) D2	L	L1 <sup>1</sup>	L2	L3	S1	S2		
L	6	315	4	L	L11	L2	L3	S1	S2	3,60	FI-EL-06L-W3-SV	
	.24	4568	.16	19	27	12	26	12	14	7,92		
	8	315	6	.75	1.06	.47	1.02	.47	.55	4,70	FI-EL-08L-W3-SV	
	.31	4568	.24	21	29	14	27,5	12	17	10,34		
	10	315	8	.83	1.14	.55	1.08	.47	.67	6,10	FI-EL-10L-W3-SV	
	.39	4568	.31	22	30	15	29	14	19	13,42		
	12	315	10	.87	1.18	.59	1.14	.55	.75	8,30	FI-EL-12L-W3-SV	
	.47	4568	.39	24	32	17	29,5	17	22	18,26		
	15	315	12	.94	1.26	.67	1.16	.67	.87	14,40	FI-EL-15L-W3-SV	
	.59	4568	.47	28	36	21	32,5	19	27	31,68		
	18	315	15	1.10	1.42	.83	1.28	.75	1.06	20,70	FI-EL-18L-W3-SV	
	.71	4568	.59	31	40	23,5	35,5	24	32	45,45		
	22	160	19	1.22	1.57	.93	1.40	.94	1.26	29,30	FI-EL-22L-W3-SV	
	.87	2320	.75	35	44	27,5	38,5	27	36	64,46		
	28	160	24	1.38	1.73	1.08	1.52	1.06	1.42	40,80	FI-EL-28L-W3-SV	
	1.10	2320	.94	38	47	30,5	41,5	36	41	89,76		
	35	160	30	1.50	1.85	1.20	1.63	1.42	1.61	65,00	FI-EL-35L-W3-SV	
	1.38	2320	1.18	45	56	34,5	51	41	50	143,00		
	42	160	36	1.77	2.20	1.36	2.01	1.61	1.97	87,90	FI-EL-42L-W3-SV	
	1.65	2320	1.42	51	63	40	56	50	60	193,38		
S	6	630	4	2.01	2.48	1.57	2.20	1.97	2.36	5,80	FI-EL-06S-W3-SV	
	.24	9135	.16	23	31	16	27	12	17	12,76		
	8	630	5	.91	1.22	.63	1.06	.47	.67	7,80	FI-EL-08S-W3-SV	
	.31	9135	.20	24	32	17	27,5	14	19	17,16		
	10	630	7	.94	1.26	.67	1.08	.55	.75	10,20	FI-EL-10S-W3-SV	
	.39	9135	.28	25	34	17,5	30	17	22	22,44		
	12	630	8	.98	1.34	.69	1.18	.67	.87	13,50	FI-EL-12S-W3-SV	
	.47	9135	.31	29	38	21,5	31	17	24	29,70		
	14	400	10	1.14	1.50	.85	1.22	.67	.94	17,70	FI-EL-14S-W3-SV	
	.55	5800	.39	30	40	22	35	19	27	38,94		
	16	400	12	1.18	1.57	.87	1.38	.75	1.06	23,70	FI-EL-16S-W3-SV	
	.63	5800	.47	33	43	24,5	36,5	24	30	52,14		
	20	400	16	1.30	1.69	.96	1.44	.94	1.18	36,50	FI-EL-20S-W3-SV	
	.79	5800	.63	37	48	26,5	44,5	27	36	80,30		
	25	400	20	1.46	1.89	1.04	1.75	1.06	1.42	63,70	FI-EL-25S-W3-SV	
	.98	5800	.79	42	54	30	50	36	46	140,14		
	30	400	25	1.65	2.13	1.18	1.97	1.42	1.81	88,90	FI-EL-30S-W3-SV	
	1.18	5800	.98	49	62	35,5	55	41	50	195,58		
38	315	32	1.93	2.44	1.40	2.17	1.61	1.97	135,80	FI-EL-38S-W3-SV		
1.50	4568	1.26	57	72	41	63	50	60	298,76			

<sup>1</sup> Approximate dimension in assembled condition.

<sup>2</sup> Weight including cutting ring and union nut on the standpipe.

<sup>3</sup> Standard scope of delivery: Fitting body assembled with cutting ring and union nut on the standpipe.



Typical application with a Straight Male Stud Fitting FI-GE-...

Please note: Standpipes are always factory-assembled with cutting rings and union nuts.

The union nut assembled on the standpipe has to be tightened by only 1/12 a turn (equivalent to 30°) beyond the fixed point.

