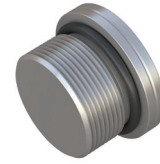
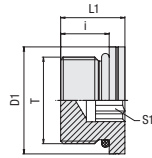


Blanking Screw for Ports  
Type FI-VS-...-M-OR



O-Ring

Metric Parallel Thread

PN (bar/psi)	Dimensions (mm/in)					Torque (N·m/ft·lb)	Weight (kg/lbs) Ca. per 100	Ordering Codes
	Thread T	D1	L1	i	S1			
630	M 10 x 1	13,8	13,5	9,5	5	15	0,8	FI-VS-M10x1-OR-B-W3
9135		.54	.53	.37	.20	11.1	1.76	
630	M 12 x 1,5	16,8	15,5	11	6	22	1,4	FI-VS-M12x1.5-OR-B-W3
9135		.66	.61	.43	.24	16.3	3.08	
630	M 14 x 1,5	18,8	16	11	6	45	2,0	FI-VS-M14x1.5-OR-B-W3
9135		.74	.63	.43	.24	33.3	4.40	
630	M 16 x 1,5	21,8	17,5	12,5	8	55	2,7	FI-VS-M16x1.5-OR-B-W3
9135		.86	.69	.49	.31	40.7	5.94	
630	M 18 x 1,5	23,8	19	14	8	70	3,8	FI-VS-M18x1.5-OR-B-W3
9135		.94	.75	.55	.31	51.8	8.36	
630	M 22 x 1,5	26,8	20	15	10	100	5,5	FI-VS-M22x1.5-OR-B-W3
9135		1.06	.79	.59	.39	74.0	12.10	
400	M 26 x 1,5	31,8	21	16	12	170	7,7	FI-VS-M26x1.5-OR-B-W3
5800		1.25	.83	.63	.47	125.8	16.94	
400	M 27 x 2	31,8	23,5	18,5	12	180	9,4	FI-VS-M27x2-OR-B-W3
5800		1.25	.93	.73	.47	133.2	20.68	
400	M 33 x 2	40,8	24,5	18,5	14	215	15,6	FI-VS-M33x2-OR-B-W3
5800		1.61	.96	.73	.55	159.1	34.32	
400	M 42 x 2	49,8	25	19	22	330	24,5	FI-VS-M42x2-OR-B-W3
5800		1.96	.98	.75	.87	244.2	53.90	
400	M 48 x 2	54,8	27,5	21,5	24	420	37,1	FI-VS-M48x2-OR-B-W3
5800		2.16	1.08	.85	.94	310.8	81.62	

Standard seal material is NBR (Buna-N®).

Male stud acc. to ISO 6149-2/-3  
Port acc. to ISO 6149-1

Male threaded studs were designed for female threaded ports in components made of steel. For applications with components made of softer mating materials (e.g. Aluminium), the use of connectors with additionally rolled male threads is recommended.

Please contact STAUFF prior to the assembly for further information.

Torque recommendations for Steel mating material.

Ordering Codes

**\*FI-VS\*-M\*12x1.5\*-OR\*-B\*-W3**

* Blanking Screw for Ports	FI-VS
* Thread Type	Metric Parallel Thread <b>M</b>
* Thread Size	acc. to dimension table <b>12x1.5</b>
Please always indicate thread sizes, e.g. 12x1.5!	
* Seal Type	O-Ring <b>-OR</b>
* Seal Material	NBR (Buna-N®) <b>-B</b> FKM (Viton®) <b>-V</b> EPDM <b>-E</b>
* Material Code	Steel, zinc/nickel-plated <b>-W3</b>

Please contact STAUFF for alternative materials and surface finishings.

Spare Parts / Accessories



O-Ring  
Type **O-RING**