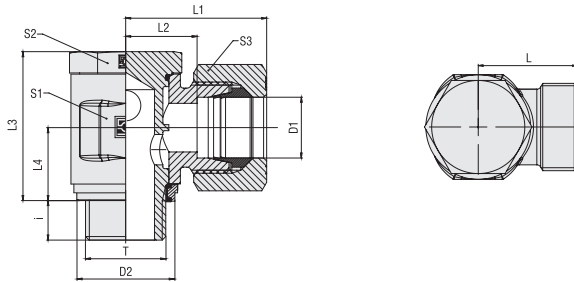


**Banjo Elbow (Medium-Pressure Version)
Type FI-RSWND-...-M-WD ■ Series L / S**

Retaining Ring with Captive Seal
Metric Parallel Thread

Series	Tube OD PB		Dimensions	Dimensions													Weight (kg/lbs) ca. per 100 ²	Ordering Codes ³
	(mm/in)	(bar/psi)		(mm/in)	Thread T	D2	L	L ¹	L2	L3	L4	i	S1	S2	S3			
L	6	250	M 10 x 1	15	18,5	26	11,5	21	10	6	14	14	14	3,10	FI-RSWND-06LM-WD-B-W3			
	.24	3625		.59	.73	1.02	.45	.83	.39	.24	.55	.55	.55	6.83				
	8	250	M 12 x 1,5	17,8	20	28	13	25	12	9	17	17	17	5,20	FI-RSWND-08LM-WD-B-W3			
	.31	3625		.70	.79	1.10	.51	.98	.47	.35	.67	.67	.67	11.44				
	10	250	M 14 x 1,5	20	22	30	15	27	13	9	19	19	19	7,31	FI-RSWND-10LM-WD-B-W3			
	.39	3625		.79	.87	1.18	.59	1.06	.51	.35	.75	.75	.75	16.07				
	12	160	M 16 x 1,5	22	23	31	16	32	15	9	22	22	22	10,27	FI-RSWND-12LM-WD-B-W3			
	.47	2320		.87	.91	1.22	.63	1.26	.59	.35	.87	.87	.87	22.59				
	15	160	M 18 x 1,5	25,8	25	33	18	37	18	9	24	24	27	13,86	FI-RSWND-15LM-WD-B-W3			
	.59	2320		1.02	.98	1.30	.71	1.46	.71	.35	.94	.94	1.06	30.49				
18	160	M 22 x 1,5	28,8	27	36	19,5	44,5	21,5	11	30	27	32	22,65	FI-RSWND-18LM-WD-B-W3				
.71	2320		1.13	1.06	1.42	.77	1.75	.85	.43	1.18	1.06	1.26	49.84					
22	160	M 26 x 1,5	32	32	41	24,5	49	24	13	36	32	36	30,84	FI-RSWND-22LM-WD-B-W3				
.87	2320		1.26	1.26	1.61	.96	1.93	.94	.51	1.42	1.26	1.42	67.85					
S	6	250	M 12 x 1,5	17,8	21,5	29	14,5	25	12	9	17	17	17	5,57	FI-RSWND-06SM-WD-B-W3			
	.24	3625		.70	.85	1.14	.57	.98	.47	.35	.67	.67	.67	12.25				
	8	250	M 14 x 1,5	20	23	31	16	27	13	9	19	19	19	7,82	FI-RSWND-08SM-WD-B-W3			
	.31	3625		.79	.91	1.22	.63	1.06	.51	.35	.75	.75	.75	17.21				
	10	160	M 16 x 1,5	22	23,5	32,5	16	32	15	9	22	22	22	10,71	FI-RSWND-10SM-WD-B-W3			
	.39	2320		.87	.93	1.28	.63	1.26	.59	.35	.87	.87	.87	23.56				
	12	160	M 18 x 1,5	25,8	25	34	17,5	37	18	9	24	24	24	14,12	FI-RSWND-12SM-WD-B-W3			
	.47	2320		1.02	.98	1.34	.69	1.46	.71	.35	.94	.94	.94	31.07				
	16	160	M 22 x 1,5	28,8	30	40	21,5	44,5	21,5	11	30	27	30	23,66	FI-RSWND-16SM-WD-B-W3			
	.63	2320		1.13	1.18	1.57	.85	1.75	.85	.43	1.18	1.06	1.18	52.05				
20	160	M 27 x 2	33	34	45	23,5	49	24	13	36	32	36	33,01	FI-RSWND-20SM-WD-B-W3				
.79	2320		1.30	1.34	1.77	.93	1.93	.94	.51	1.42	1.26	1.42	72.62					

Ordering Codes
***FI-RSWND*-10*L*R*-WD*-B*-W3*-MS**
*** Banjo Elbow (Medium-Pressure Version) FI-RSWND**
*** Outside Tube Diameter D1 (in mm) -10**
*** Series** Extra-Light Series **LL**
 Light Series **L**
 Heavy Series **S**
*** Thread Type** Metric Parallel Thread **M**

If required, please indicate special sizes, e.g. M12x1.5!

*** Seal Type** Retaining Ring with Captive Seal **-WD**
*** Seal Material** NBR (Buna-N®) **-B**
 FKM (Viton®) **-V**
 EPDM **-E**
*** Material Code** Steel, zinc/nickel-plated **-W3**

Please contact STAUFF for alternative materials and surface finishings.

*** Assembling / Kitting** Fitting body only **—**
 Fitting body supplied with cutting ring and union nut **-MS**
 Fitting body supplied with soft-sealing cutting ring and union nut **-MSV**
¹ Approximate dimension in assembled condition.

² Weight excluding cutting ring and union nut.

³ Standard scope of delivery: Fitting body only.

Standard seal material is NBR (Buna-N®).

Port acc. to DIN 3852-1 (Form X) / ISO 9974-1

Male threaded studs were designed for female threaded ports in components made of steel. For applications with components made of softer mating materials (e.g. Aluminium), the use of connectors with additionally rolled male threads is recommended.

Please contact STAUFF prior to the assembly for further information.

Connecting Parts

Spare Parts / Accessories
