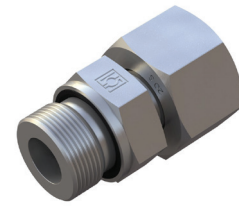
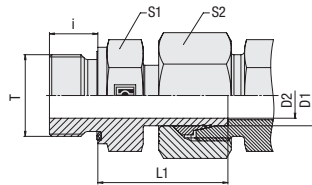


**Straight Male Stud Standpipe Fitting  
Type FI-EGE-...-M-WD • Series L / S**

**Profile Sealing Ring**
**Metric Parallel Thread**

Series	Tube OD (mm/in)	PN (bar/PSI)	Dimensions (mm/in)						Torque (N·m/ft·lb)	Weight (kg/lbs) Ca.	Ordering Codes <sup>2</sup>
			Thread T	D2	L1	i	S1	S2			
L	6	315	M 10 x 1	3,5	24,5	8	14	14	18	2,30	FI-EGE-06LM-WD-B-W3-SV
	.24	4568		.14	.96	.31	.55	.55	13.3	5,06	
	8	315	M 12 x 1,5	5,5	26,5	12	17	17	25	3,90	FI-EGE-08LM-WD-B-W3-SV
	.31	4568		.22	1.04	.47	.67	.67	18.5	8.58	
	10	315	M 14 x 1,5	7	27,5	12	19	19	45	4,99	FI-EGE-10LM-WD-B-W3-SV
	.39	4568		.28	1.08	.47	.75	.75	33.3	10.97	
	12	315	M 16 x 1,5	9	30,5	12	22	22	55	7,18	FI-EGE-12LM-WD-B-W3-SV
	.47	4568		.35	1.20	.47	.87	.87	40.7	15.79	
	15	315	M 18 x 1,5	11	31,5	12	24	27	70	10,25	FI-EGE-15LM-WD-B-W3-SV
	.59	4568		.43	1.24	.47	.94	1.06	51.8	22.55	
	18	315	M 22 x 1,5	14	31,5	14	27	32	125	13,62	FI-EGE-18LM-WD-B-W3-SV
	.71	4568		.55	1.24	.55	1.06	1.26	92.5	29.97	
	22	160	M 26 x 1,5	18	32,5	16	32	36	180	10,60	FI-EGE-22LM-WD-B-W3-SV
	.87	2320		.71	1.28	.63	1.26	1.42	133.2	23.32	
	28	160	M 33 x 2	23	35	18	41	41	310	30,26	FI-EGE-28LM-WD-B-W3-SV
	1.10	2320		.91	1.38	.71	1.61	1.61	229.4	66.57	
	35	160	M 42 x 2	29,5	42,5	20	50	50	450	47,17	FI-EGE-35LM-WD-B-W3-SV
	1.38	2320		1.16	1.67	.79	1.97	1.97	333.0	103.77	
	42	160	M 48 x 2	35,5	46,5	22	55	60	540	77,85	FI-EGE-42LM-WD-B-W3-SV
	1.65	2320		1.40	1.83	.87	2.17	2.36	399.6	171.26	
S	6	630	M 12 x 1,5	3,5	27	12	17	17	35	4,34	FI-EGE-06SM-WD-B-W3-SV
	.24	9135		.14	1.06	.47	.67	.67	25.9	9.54	
	8	630	M 14 x 1,5	4,5	29,5	12	19	19	55	5,90	FI-EGE-08SM-WD-B-W3-SV
	.31	9135		.18	1.16	.47	.75	.75	40.7	12.98	
	10	630	M 16 x 1,5	6,5	32	12	22	22	70	8,20	FI-EGE-10SM-WD-B-W3-SV
	.39	9135		.26	1.26	.47	.87	.87	51.8	18.04	
	12	630	M 18 x 1,5	7,5	34	12	24	24	90	10,97	FI-EGE-12SM-WD-B-W3-SV
	.47	9135		.30	1.34	.47	.94	.94	66.6	24.14	
	14	630	M 20 x 1,5	9,5	36,5	14	27	27	125	15,57	FI-EGE-14SM-WD-B-W3-SV
	.55	9135		.37	1.44	.55	1.06	1.06	92.5	34.25	
	16	630	M 22 x 1,5	11,5	37	14	27	30	135	16,20	FI-EGE-16SM-WD-B-W3-SV
	.63	9135		.45	1.46	.55	1.06	1.18	99.9	35.64	
	20	400	M 27 x 2	15,5	43	16	32	36	180	27,06	FI-EGE-20SM-WD-B-W3-SV
	.79	5800		.61	1.69	.63	1.26	1.42	133.2	59.54	
	25	400	M 33 x 2	18	48	18	41	46	310	48,60	FI-EGE-25SM-WD-B-W3-SV
	.98	5800		.71	1.89	.71	1.61	1.81	229.4	106.92	
	30	400	M 42 x 2	23,5	51	20	50	50	450	69,15	FI-EGE-30SM-WD-B-W3-SV
	1.18	5800		.93	2.01	.79	1.97	1.97	333.0	152.13	
	38	315	M 48 x 2	29	60	22	55	60	540	110,29	FI-EGE-38SM-WD-B-W3-SV
	1.50	4568		1.14	2.36	.87	2.17	2.36	399.6	242.65	

**Ordering Codes**
**\*FI-EGE\*-10\*L\*M\*-WD\*-B\*-W3\*-SV**

- \* Straight Male Stud Standpipe Fitting **FI-EGE**
- \* Outside Tube Diameter D1 (in mm) **-10**
- \* Series **L**  
Light Series **L**  
Heavy Series **S**
- \* Thread Type **M**  
Metric Parallel Thread **M**

If required, please indicate special sizes, e.g. M12x1.5!

- \* Seal Type **-WD**  
Profile Sealing Ring **-WD**
- \* Seal Material **-B**  
NBR (Buna-N®) **-B**  
FKM (Viton®) **-V**  
EPDM **-E**
- \* Material Code **-W3**  
Steel, zinc/nickel-plated **-W3**

Please contact STAUFF for alternative materials and surface finishings.

- \* Assembling / Kitting **-SV**  
Fitting body assembled with cutting ring and union nut on the standpipe **-SV**

**Spare Parts / Accessories**


Profile Sealing Ring  
Type **WDG**

<sup>1</sup> Weight including cutting ring and union nut on the standpipe.

<sup>2</sup> Standard scope of delivery: Fitting body assembled with cutting ring and union nut on the standpipe.

Please note: Standpipes are always factory-assembled with cutting rings and union nuts.

The union nut assembled on the standpipe has to be tightened by only 1/12 a turn (equivalent to 30°) beyond the fixed point.



Male stud acc. to ISO 9974-2 (Type E)  
Port acc. to ISO 9974-1

Torque recommendations for Steel mating material.

Male threaded studs were designed for female threaded ports in components made of steel. For applications with components made of softer mating materials (e.g. Aluminium), the use of connectors with additionally rolled male threads is recommended.  
Please contact STAUFF prior to the assembly for further information.