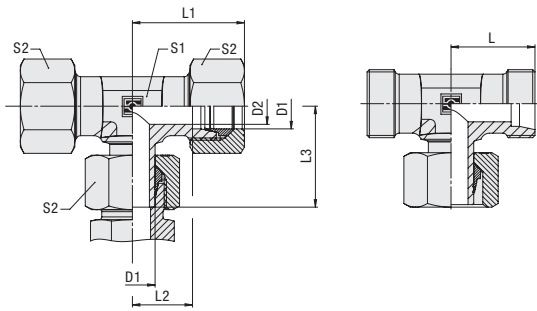


Adjustable Standpipe Branch Tee Type FI-ET ■ Series L / S



Series	Tube OD		PN		Dimensions					Weight (^{kg} / _{lbs}) ca. per 100 ²	Ordering Codes ³
	(mm/in)	(bar/PSI)	(mm/in)	(mm/in)	L	L1 ¹	L2	L3	S1		
L	6	315	4	19	27	12	26	12	14	3,60	FI-ET-06L-W3-SV
	.24	4568	.16	.75	1.06	.47	1.02	.47	.55	7.92	
	8	315	6	21	29	14	27,5	12	17	4,70	FI-ET-08L-W3-SV
	.31	4568	.24	.83	1.14	.55	1.08	.47	.67	10.34	
	10	315	8	22	30	15	29	14	19	6,10	FI-ET-10L-W3-SV
	.39	4568	.31	.87	1.18	.59	1.14	.55	.75	13.42	
	12	315	10	24	32	17	29,5	17	22	8,30	FI-ET-12L-W3-SV
	.47	4568	.39	.94	1.26	.67	1.16	.67	.87	18.26	
	15	315	12	28	36	21	32,5	19	27	14,40	FI-ET-15L-W3-SV
	.59	4568	.47	1.10	1.42	.83	1.28	.75	1.06	31.68	
	18	315	15	31	40	23,5	35,5	24	32	20,70	FI-ET-18L-W3-SV
	.71	4568	.59	1.22	1.57	.93	1.40	.94	1.26	45.45	
	22	160	19	35	44	27,5	38,5	27	36	29,30	FI-ET-22L-W3-SV
	.87	2320	.75	1.38	1.73	1.08	1.52	1.06	1.42	64.46	
	28	160	24	38	47	30,5	41,5	36	41	40,80	FI-ET-28L-W3-SV
	1.10	2320	.94	1.50	1.85	1.20	1.63	1.42	1.61	89.76	
	35	160	30	45	56	34,5	51	41	50	65,00	FI-ET-35L-W3-SV
	1.38	2320	1.18	1.77	2.20	1.36	2.01	1.61	1.97	143.00	
42	160	36	51	63	40	56	50	60	87,90	FI-ET-42L-W3-SV	
1.65	2320	1.42	2.01	2.48	1.57	2.20	1.97	2.36	193.38		
S	6	630	4	23	31	16	27	12	17	5,80	FI-ET-06S-W3-SV
	.24	9135	.16	.91	1.22	.63	1.06	.47	.67	12.76	
	8	630	5	24	32	17	27,5	14	19	7,80	FI-ET-08S-W3-SV
	.31	9135	.20	.94	1.26	.67	1.08	.55	.75	17.16	
	10	630	7	25	34	17,5	30	17	22	10,20	FI-ET-10S-W3-SV
	.39	9135	.28	.98	1.34	.69	1.18	.67	.87	22.44	
	12	630	8	29	38	21,5	31	17	24	13,50	FI-ET-12S-W3-SV
	.47	9135	.31	1.14	1.50	.85	1.22	.67	.94	29.70	
	14	400	10	30	40	22	35	19	27	17,70	FI-ET-14S-W3-SV
	.55	5800	.39	1.18	1.57	.87	1.38	.75	1.06	38.94	
	16	400	12	33	43	24,5	36,5	24	30	23,70	FI-ET-16S-W3-SV
	.63	5800	.47	1.30	1.69	.96	1.44	.94	1.18	52.14	
	20	400	16	37	48	26,5	44,5	27	36	36,50	FI-ET-20S-W3-SV
	.79	5800	.63	1.46	1.89	1.04	1.75	1.06	1.42	80.30	
	25	400	20	42	54	30	50	36	46	63,70	FI-ET-25S-W3-SV
	.98	5800	.79	1.65	2.13	1.18	1.97	1.42	1.81	140.14	
	30	400	25	49	62	35,5	55	41	50	88,90	FI-ET-30S-W3-SV
	1.18	5800	.98	1.93	2.44	1.40	2.17	1.61	1.97	195.58	
38	315	32	57	72	41	63	50	60	135,80	FI-ET-38S-W3-SV	
1.50	4568	1.26	2.24	2.83	1.61	2.48	1.97	2.36	298.76		

Ordering Codes

***FI-ET*-10*L*-W3*-SV-MS**

* Adjustable Standpipe Branch Tee **FI-ET**

* Outside Tube Diameter D1 (in mm) **-10**

* Series Light Series **L**
Heavy Series **S**

* Material Code Steel, zinc/nickel-plated **-W3**

Please contact STAUFF for alternative materials and surface finishings.

* Assembling / Kitting Fitting body assembled with cutting ring and union nut on the standpipe **-SV**

Fitting body assembled with cutting rings and union nuts on all ends **-SV-MS**

Connecting Parts



¹ Approximate dimension in assembled condition.

² Weight including cutting ring and union nut on the standpipe.

³ Standard scope of delivery: Fitting body assembled with cutting ring and union nut on the standpipe.



Typical application with a Straight Male Stud Fitting FI-GE-...

Please note: Standpipes are always factory-assembled with cutting rings and union nuts.

The union nut assembled on the standpipe has to be tightened by only 1/12 a turn (equivalent to 30°) beyond the fixed point.

