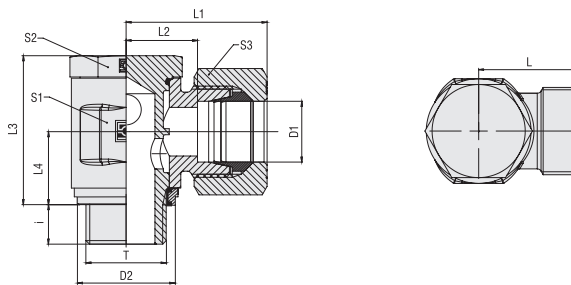


Banjo Elbow (Medium-Pressure Version)
Type FI-RSND-...-R-WD ▪ Series L / S



Whitworth Parallel Pipe Thread (BSPP)

Retaining Ring with Captive Seal

Ordering Codes

***FI-RSND*-10*L*R*-WD*-B*-W3*-MS**

* Banjo Elbow (Medium-Pressure Version) **FI-RSND**

* Outside Tube Diameter D1 (in mm) **-10**

* Series **LL** Extra-Light Series
L Light Series
S Heavy Series

* Thread Type **R** Whitworth Parallel Pipe Thread (BSPP)

If required, please indicate special sizes, e.g. R1/8!

* Seal Type **-WD** Retaining Ring with Captive Seal

* Seal Material **-B** NBR (Buna-N®)
-V FKM (Viton®)
-E EPDM

* Material Code **-W3** Steel, zinc/nickel-plated

Please contact STAUFF for alternative materials and surface finishings.

* Assembling / Kitting **—** Fitting body only
-MS Fitting body supplied with cutting ring and union nut
-MSV Fitting body supplied with soft-sealing cutting ring and union nut

Series	Tube OD (mm/in)	PB (mm/psi)	Dimensions (mm/in)										Weight (kg/lbs) ca. per 100 ²	Ordering Codes ³	
			D1	Thread	T	D2	L	L1 ¹	L2	L3	L4	i			S1
L	6	250	G 1/8	15	18,5	25	11,5	21	10	6	14	14	14	3,07	FI-RSND-06LR-WD-B-W3
	.24	3625		.59	.73	.98	.45	.83	.39	.24	.55	.55	.55	6,75	
	8	250	G 1/4	18,8	20	26	13	26	12	10	17	19	17	5,97	FI-RSND-08LR-WD-B-W3
	.31	3625		.74	.79	1.02	.51	1.02	.47	.39	.67	.75	.67	13,14	
	10	250	G 1/4	18,8	22	30	15	27	13	9	19	19	19	7,60	FI-RSND-10LR-WD-B-W3
	.39	3625		.74	.87	1.18	.59	1.06	.51	.35	.75	.75	.75	16,71	
	12	160	G 3/8	22	23	31	16	32	15	9	22	22	22	10,45	FI-RSND-12LR-WD-B-W3
	.47	2320		.87	.91	1.22	.63	1.26	.59	.35	.87	.87	.87	22,99	
	15	160	G 1/2	28,8	26,5	35	19,5	37,5	18	11	27	27	27	18,00	FI-RSND-15LR-WD-B-W3
	.59	2320		1.13	1.04	1.38	.77	1.48	.71	.43	1.06	1.06	1.06	39,59	
	18	160	G 1/2	28,8	27	36	19,5	44,5	21,5	11	30	27	32	22,31	FI-RSND-18LR-WD-B-W3
	.71	2320		1.13	1.06	1.42	.77	1.75	.85	.43	1.18	1.06	1.26	49,08	
22	160	G 3/4	33	32	41	24,5	49	24	13	36	32	36	31,05	FI-RSND-22LR-WD-B-W3	
.87	2320		1.30	1.26	1.61	.96	1.93	.94	.51	1.42	1.26	1.42	68,30		
S	6	250	G 1/4	18,8	21,5	29	14,5	26	12	10	17	19	17	6,34	FI-RSND-06SR-WD-B-W3
	.24	3625		.74	.85	1.14	.57	1.02	.47	.39	.67	.75	.67	13,96	
	8	250	G 1/4	18,8	23	29	16	27	13	9	19	19	19	7,60	FI-RSND-08SR-WD-B-W3
	.31	3625		.74	.91	1.14	.63	1.06	.51	.35	.75	.75	.75	16,71	
	10	160	G 3/8	22	23,5	32	16	32	15	9	22	22	22	10,89	FI-RSND-10SR-WD-B-W3
	.39	2320		.87	.93	1.26	.63	1.26	.59	.35	.87	.87	.87	23,96	
	12	160	G 3/8	22	26	34	18,5	37	18	9	24	24	24	14,51	FI-RSND-12SR-WD-B-W3
	.47	2320		.87	1.02	1.34	.73	1.46	.71	.35	.94	.94	.94	31,92	
	14	160	G 1/2	28,8	28,5	39	20,5	37,5	18	11	27	27	27	18,77	FI-RSND-14SR-WD-B-W3
	.55	2320		1.13	1.12	1.54	.81	1.48	.71	.43	1.06	1.06	1.06	41,30	
	16	160	G 1/2	28,8	30	40	21,5	44,5	21,5	11	30	27	30	23,32	FI-RSND-16SR-WD-B-W3
	.63	2320		1.13	1.18	1.57	.85	1.75	.85	.43	1.18	1.06	1.18	51,29	
20	160	G 3/4	33	34	45	23,5	49	24	13	36	32	36	32,63	FI-RSND-20SR-WD-B-W3	
.79	2320		1.30	1.34	1.77	.93	1.93	.94	.51	1.42	1.26	1.42	71,79		

¹ Approximate dimension in assembled condition.

² Weight excluding cutting ring and union nut.

³ Standard scope of delivery: Fitting body only.

Port acc. to DIN 3852-2 (Form X) / ISO 1179-1

Male threaded studs were designed for female threaded ports in components made of steel. For applications with components made of softer mating materials (e.g. Aluminium), the use of connectors with additionally rolled male threads is recommended.

Please contact STAUFF prior to the assembly for further information.

Standard seal material is NBR (Buna-N®).

Connecting Parts

- Cutting Ring Type **FI-DS**
- Soft-Sealing Cutting Ring Type **FI-WDDS**
- Support Sleeve Type **FI-VH**
- STAUFF Form Ring Type **FI-AR**
- Union Nut Type **FI-M**
- 37° Flared Tube Fitting Set Type **FI-AB**

Spare Parts / Accessories

- Retaining Ring with Captive Seal Type **FI-DIR**
- O-Ring Type **O-RING**