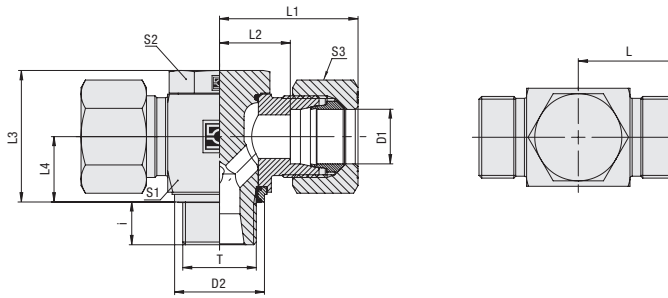


**Banjo Tee (High-Pressure Version)**  
**Type FI-RST-...-R-WD • Series L / S**



**Whitworth Parallel Pipe Thread (BSPP)**

**Retaining Ring with Captive Seal**

**Ordering Codes**

**\*FI-RST\*-10\*L\*R\*-WD\*-B\*-W3\*-MS**

\* Banjo Tee (High-Pressure Version) **FI-RST**

\* Outside Tube Diameter D1 (in mm) **-10**

\* Series Light Series **L**  
 Heavy Series **S**

\* Thread Type Whitworth Parallel Pipe Thread (BSPP) **R**

If required, please indicate special sizes, e.g. R1/8!

\* Seal Type Retaining Ring with Captive Seal **-WD**

\* Seal Material NBR (Buna-N®) **-B**  
 FKM (Viton®) **-V**  
 EPDM **-E**

\* Material Code Steel, zinc/nickel-plated **-W3**

Please contact STAUFF for alternative materials and surface finishings.

\* Assembling / Kitting Fitting body only **—**

Fitting body supplied with cutting ring and union nut **-MS**

Fitting body supplied with soft-sealing cutting ring and union nut **-MSV**

**Connecting Parts**



Cutting Ring  
 Type **FI-DS**



Soft-Sealing Cutting Ring  
 Type **FI-WDDS**



Support Sleeve  
 Type **FI-VH**



STAUFF Form Ring  
 Type **FI-AR**



Union Nut  
 Type **FI-M**



37° Flared Tube Fitting Set  
 Type **FI-AB**

**Spare Parts / Accessories**



Retaining Ring with Captive Seal  
 Type **FI-DIR**



O-Ring  
 Type **O-RING**

Series	Tube OD (mm/in)	PB (°BW/PSI)	Dimensions (mm/in)											Weight (kg/lbs) ca. per 100 <sup>2</sup>	Ordering Codes <sup>3</sup>
			Thread	T	D2	L	L1 <sup>1</sup>	L2	L3	L4	i	S1	S2		
L	6	500	G 1/8	14,9	20	28	13	21	10,5	8	14	14	14	4,31	FI-RST-06LR-WD-B-W3
	.24	7250		.59	.79	1.10	.51	.83	.41	.31	.55	.55	.55	9.48	
	8	500	G 1/4	18,9	21	29	14	27	13,5	10	19	19	17	8,60	FI-RST-08LR-WD-B-W3
	.31	7250		.74	.83	1.14	.55	1.06	.53	.39	.75	.75	.67	18.92	
	10	500	G 1/4	18,9	22	30	15	27	13,5	10	19	19	19	8,92	FI-RST-10LR-WD-B-W3
	.39	7250		.74	.87	1.18	.59	1.06	.53	.39	.75	.75	.75	19.63	
	12	400	G 3/8	21,9	24,5	32,5	17,5	32,5	16	12	24	22	22	14,78	FI-RST-12LR-WD-B-W3
	.47	5800		.86	.96	1.28	.69	1.28	.63	.47	.94	.87	.87	32.52	
	15	400	G 1/2	26,9	27	35	21	43	19,5	14	30	27	27	27,43	FI-RST-15LR-WD-B-W3
	.59	5800		1.06	1.06	1.38	.83	1.69	.77	.55	1.18	1.06	1.06	60.35	
	18	400	G 1/2	26,9	28	37	20,5	43	21,5	12	30	27	32	1,52	FI-RST-18LR-WD-B-W3
	.71	5800		1.06	1.10	1.46	.81	1.69	.85	.47	1.18	1.06	1.26	3.34	
	22	250	G 3/4	32,9	34,5	43,5	27	48	24	16	36	32	36	45,42	FI-RST-22LR-WD-B-W3
	.87	3625		1.30	1.36	1.71	1.06	1.89	.94	.63	1.42	1.26	1.42	99.91	
	28	250	G 1	39,9	39	48	31,5	59	30,5	18	46	41	41	85,48	FI-RST-28LR-WD-B-W3
	1.10	3625		1.57	1.54	1.89	1.24	2.32	1.20	.71	1.81	1.61	1.61	188.06	
	35	250	G 1 1/4	49,9	46	57	35,5	70	35,5	20	55	50	50	145,79	FI-RST-35LR-WD-B-W3
	1.38	3625		1.96	1.81	2.24	1.40	2.76	1.40	.79	2.17	1.97	1.97	320.75	
42	250	G 1 1/2	55,9	51	63	40	80	40,5	22	65	55	60	217,42	FI-RST-42LR-WD-B-W3	
1.65	3625		2.20	2.01	2.48	1.57	3.15	1.59	.87	2.56	2.17	2.36	478.33		
S	6	500	G 1/4	18,9	23	31	16	27	13,5	10	19	19	17	9,30	FI-RST-06SR-WD-B-W3
	.24	7250		.74	.91	1.22	.63	1.06	.53	.39	.75	.75	.67	20.46	
	8	500	G 1/4	18,9	23	31	16	27	13,5	10	19	19	19	9,97	FI-RST-08SR-WD-B-W3
	.31	7250		.74	.91	1.22	.63	1.06	.53	.39	.75	.75	.75	21.93	
	10	500	G 3/8	21,9	25,5	34,5	18	32,5	16	10	24	22	22	19,08	FI-RST-10SR-WD-B-W3
	.39	7250		.86	1.00	1.36	.71	1.28	.63	.39	.94	.87	.87	41.98	
	12	400	G 3/8	21,9	27	36	18	32,5	16	10	24	22	24	16,36	FI-RST-12SR-WD-B-W3
	.47	5800		.86	1.06	1.42	.71	1.28	.63	.39	.94	.87	.94	35.99	
	14	400	G 1/2	26,9	30	40	22	41	19,5	14	30	27	27	31,86	FI-RST-14SR-WD-B-W3
	.55	5800		1.06	1.18	1.57	.87	1.61	.77	.55	1.18	1.06	1.06	70.09	
	16	400	G 1/2	26,9	30	40	21,5	43	21,5	12	30	27	30	29,20	FI-RST-16SR-WD-B-W3
	.63	5800		1.06	1.18	1.57	.85	1.69	.85	.47	1.18	1.06	1.18	64.24	
	20	315	G 3/4	32,9	36,5	47,5	26	48	24	16	36	32	36	48,66	FI-RST-20SR-WD-B-W3
	.79	4568		1.30	1.44	1.87	1.02	1.89	.94	.63	1.42	1.26	1.42	107.05	
	25	250	G 1	39,9	43	55	31	59	30,5	18	46	41	46	93,55	FI-RST-25SR-WD-B-W3
	.98	3625		1.57	1.69	2.17	1.22	2.32	1.20	.71	1.81	1.61	1.81	205.80	
	30	250	G 1 1/4	49,9	50	63	36,5	70	35,5	20	55	50	50	153,59	FI-RST-30SR-WD-B-W3
	1.18	3625		1.96	1.97	2.48	1.44	2.76	1.40	.79	2.17	1.97	1.97	337.91	
38	250	G 1 1/2	55,9	57	72	41	80	40,5	22	65	55	60	236,22	FI-RST-38SR-WD-B-W3	
1.50	3625		2.20	2.24	2.83	1.61	3.15	1.59	.87	2.56	2.17	2.36	519.69		

<sup>1</sup> Approximate dimension in assembled condition.

<sup>2</sup> Weight excluding cutting ring and union nut.

<sup>3</sup> Standard scope of delivery: Fitting body only.

Standard seal material is NBR (Buna-N®).

Port acc. to DIN 3852-2 (Form X) / ISO 1179-1

Male threaded studs were designed for female threaded ports in components made of steel. For applications with components made of softer mating materials (e.g. Aluminium), the use of connectors with additionally rolled male threads is recommended.

Please contact STAUFF prior to the assembly for further information.