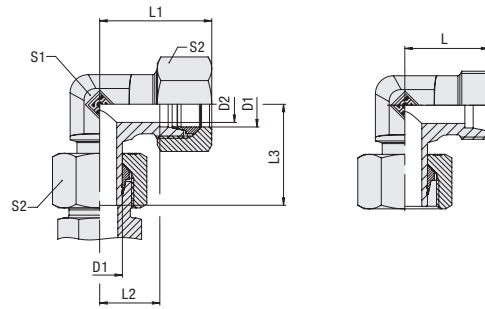


Adjustable Standpipe Elbow
Type FI-EW ▪ Series L / S



Ordering Codes

***FI-EW*-10*L*-W3*-SV-MS**

- * Adjustable Standpipe Elbow **FI-EW**
- * Outside Tube Diameter D1 (in mm) **-10**
- * Series **L**
Light Series
S
Heavy Series
- * Material Code **-W3**
Steel, zinc/nickel-plated
- Please contact STAUFF for alternative materials and surface finishings.
- * Assembling / Kitting **-SV**
Fitting body assembled with cutting ring and union nut on the standpipe
- SV-MS**
Fitting body assembled with cutting rings and union nuts on all ends

Connecting Parts

- Cutting Ring
Type **FI-DS**
- Soft-Sealing Cutting Ring
Type **FI-WDDS**
- Support Sleeve
Type **FI-VH**
- STAUFF Form Ring
Type **FI-AR**
- Union Nut
Type **FI-M**
- 37° Flared Tube Fitting Set
Type **FI-AB**

Series	Tube OD	PN	Dimensions							Weight (kg/lbs) ca. per 100 ²	Ordering Codes ³
	(mm/in) D1		(mm/in) D2	L	L1 ¹	L2	L3	S1	S2		
L	6	315	4	19	27	12	26	12	14	2,89	FI-EW-06L-W3-SV
	.24	4568	.16	.75	1.06	.47	1.02	.47	.55	6,39	
	8	315	6	21	29	14	27,5	12	17	3,89	FI-EW-08L-W3-SV
	.31	4568	.24	.83	1.14	.55	1.08	.47	.67	8,56	
	10	315	8	22	30	15	29	14	19	5,20	FI-EW-10L-W3-SV
	.39	4568	.31	.87	1.18	.59	1.14	.55	.75	11,44	
	12	315	10	24	32	17	29,5	17	22	7,20	FI-EW-12L-W3-SV
	.47	4568	.39	.94	1.26	.67	1.16	.67	.87	15,84	
	15	315	12	28	36	21	32,5	19	27	17,20	FI-EW-15L-W3-SV
	.59	4568	.47	1.10	1.42	.83	1.28	.75	1.06	37,84	
	18	315	15	31	40	23,5	35,5	24	32	17,70	FI-EW-18L-W3-SV
	.71	4568	.59	1.22	1.57	.93	1.40	.94	1.26	38,94	
	22	160	19	35	44	27,5	38,5	27	36	24,00	FI-EW-22L-W3-SV
	.87	2320	.75	1.38	1.73	1.08	1.52	1.06	1.42	52,80	
	28	160	24	38	47	30,5	41,5	36	41	35,70	FI-EW-28L-W3-SV
	1.10	2320	.94	1.50	1.85	1.20	1.63	1.42	1.61	78,54	
	35	160	30	45	56	34,5	51	41	50	58,10	FI-EW-35L-W3-SV
	1.38	2320	1.18	1.77	2.20	1.36	2.01	1.61	1.97	127,82	
42	160	36	51	63	40	56	50	60	87,00	FI-EW-42L-W3-SV	
1.65	2320	1.42	2.01	2.48	1.57	2.20	1.97	2.36	191,40		
S	6	630	4	23	31	16	27	12	17	4,60	FI-EW-06S-W3-SV
	.24	9135	.16	.91	1.22	.63	1.06	.47	.67	10,12	
	8	630	5	24	32	17	27,5	14	19	6,20	FI-EW-08S-W3-SV
	.31	9135	.20	.94	1.26	.67	1.08	.55	.75	13,64	
	10	630	7	25	34	17,5	30	17	22	8,80	FI-EW-10S-W3-SV
	.39	9135	.28	.98	1.34	.69	1.18	.67	.87	19,36	
	12	630	8	29	38	21,5	31	17	24	10,90	FI-EW-12S-W3-SV
	.47	9135	.31	1.14	1.50	.85	1.22	.67	.94	23,98	
	14	400	10	30	40	22	35	19	27	14,90	FI-EW-14S-W3-SV
	.55	5800	.39	1.18	1.57	.87	1.38	.75	1.06	32,78	
	16	400	12	33	43	24,5	36,5	24	30	20,10	FI-EW-16S-W3-SV
	.63	5800	.47	1.30	1.69	.96	1.44	.94	1.18	44,22	
	20	400	16	37	48	26,5	44,5	27	36	30,60	FI-EW-20S-W3-SV
	.79	5800	.63	1.46	1.89	1.04	1.75	1.06	1.42	67,32	
	25	400	20	42	54	30	50	36	46	55,40	FI-EW-25S-W3-SV
	.98	5800	.79	1.65	2.13	1.18	1.97	1.42	1.81	121,88	
	30	400	25	49	62	35,5	55	41	50	79,80	FI-EW-30S-W3-SV
	1.18	5800	.98	1.93	2.44	1.40	2.17	1.61	1.97	175,56	
38	315	32	57	72	41	63	50	60	110,30	FI-EW-38S-W3-SV	
1.50	4568	1.26	2.24	2.83	1.61	2.48	1.97	2.36	242,66		

¹ Approximate dimension in assembled condition.

² Weight including cutting ring and union nut on the standpipe.

³ Standard scope of delivery: Fitting body assembled with cutting ring and union nut on the standpipe.



Typical application with a Straight Male Stud Fitting FI-GE-...

Please note: Standpipes are always factory-assembled with cutting rings and union nuts.



The union nut assembled on the standpipe has to be tightened by only 1/12 a turn (equivalent to 30°) beyond the fixed point.