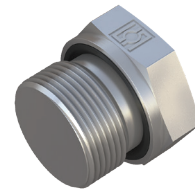
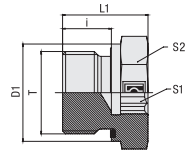


Blanking Screw for Ports (Heavy Duty)
Type FI-VSV-...-M-WD



Profile Sealing Ring

Metric Parallel Thread

PN (bar/PSI)	Dimensions (mm/in)						Torque (N-m/ft-lb)	Weight (kg/lbs) Ca. per 100	Ordering Codes
	Thread T	D1	L1	i	S1	S2			
400	M 10 x 1	14	18	8	5	14	12	1,58	FI-VSV-M10x1-WD-B-W3
5800		.55	.71	.31	.20	.55	8.9	3.47	
400	M 12 x 1,5	17	20	12	6	17	25	2,13	FI-VSV-M12x1.5-WD-B-W3
5800		.67	.79	.47	.24	.67	18.5	4.69	
400	M 14 x 1,5	19	22	12	6	19	45	3,35	FI-VSV-M14x1.5-WD-B-W3
5800		.75	.87	.47	.24	.75	33.3	7.38	
400	M 16 x 1,5	22	22	12	8	22	55	4,30	FI-VSV-M16x1.5-WD-B-W3
5800		.87	.87	.47	.31	.87	40.7	9.46	
400	M 18 x 1,5	24	22	12	8	24	70	5,38	FI-VSV-M18x1.5-WD-B-W3
5800		.94	.87	.47	.31	.94	51.8	11.83	
400	M 20 x 1,5	27	22	14	10	27	80	6,09	FI-VSV-M20x1.5-WD-B-W3
5800		1.06	.87	.55	.39	1.06	59.2	13.39	
400	M 22 x 1,5	27	22	14	10	27	125	6,77	FI-VSV-M22x1.5-WD-B-W3
5800		1.06	.87	.55	.39	1.06	92.5	14.89	
400	M 26 x 1,5	32	30	16	12	32	180	14,33	FI-VSV-M26x1.5-WD-B-W3
5800		1.26	1.18	.63	.47	1.26	133.2	31.53	
400	M 27 x 2	32	28	16	12	32	180	13,23	FI-VSV-M27x2-WD-B-W3
5800		1.26	1.10	.63	.47	1.26	133.2	29.11	
400	M 33 x 2	40	33	18	17	41	250	29,32	FI-VSV-M33x2-WD-B-W3
5800		1.57	1.30	.71	.67	1.61	185.0	64.50	
400	M 42 x 2	50	38	20	22	50	400	57,35	FI-VSV-M42x2-WD-B-W3
5800		1.97	1.50	.79	.87	1.97	296.0	126.17	
400	M 48 x 2	55	40	22	24	55	500	73,79	FI-VSV-M48x2-WD-B-W3
5800		2.17	1.57	.87	.94	2.17	370.0	162.33	

Ordering Codes

***FI-VSV*-M*12x1.5*-WD*-B*-W3**

- * Blanking Screw for Ports FI-VSV
- * Thread Type Metric Parallel Thread **M**
- * Thread Size acc. to dimension table **12x1.5**
- Please always indicate thread sizes, e.g. 12x1.5!
- * Seal Type Profile Sealing Ring **-WD**
- * Seal Material NBR (Buna-N®) **-B**
FKM (Viton®) **-V**
EPDM **-E**
- * Material Code Steel, zinc/nickel-plated **-W3**

Please contact STAUFF for alternative materials and surface finishings.

Spare Parts / Accessories



Profile Sealing Ring
Type **WDG**

Standard seal material is NBR (Buna-N®).

Male threaded studs were designed for female threaded ports in components made of steel. For applications with components made of softer mating materials (e.g. Aluminium), the use of connectors with additionally rolled male threads is recommended.

Please contact STAUFF prior to the assembly for further information.

Male stud acc. to ISO 9974-2 (Type E)
Port acc. to ISO 9974-1

Torque recommendations for Steel mating material.