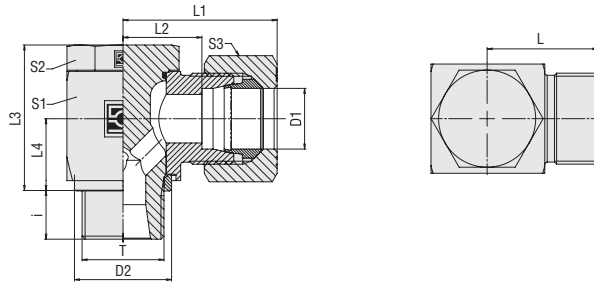


**Banjo Elbow (High-Pressure Version)
Type FI-RSW-...-M-DK ■ Series L / S**

External Metallic Sealing Ring
Metric Parallel Thread

Series	Tube OD (mm/in)	PB (bar/psi)	Dimensions (mm/in)	Dimensions													Weight (kg/lbs) ca. per 100 ²	Ordering Codes ³
				Thread	T	D2	L	L1 ¹	L2	L3	L4	i	S1	S2	S3			
L	6	500	M10x1	13	20	28	13	21	10	8	14	14	14	3,66	FI-RSW-06LM-DK-B-W3			
	.24	7250		.51	.79	1.10	.51	.83	.39	.31	.55	.55	.55	8.05				
	8	500	M12x1,5	17,8	21	29	14	27	13,5	10	19	19	17	7,70	FI-RSW-08LM-DK-B-W3			
	.31	7250		.70	.83	1.14	.55	1.06	.53	.39	.75	.75	.67	16.94				
	10	500	M14x1,5	17,8	22	30	15	27	13,5	10	19	19	19	8,21	FI-RSW-10LM-DK-B-W3			
	.39	7250		.70	.87	1.18	.59	1.06	.53	.39	.75	.75	.75	18.06				
	12	400	M16x1,5	21	24,5	32,5	17,5	32,5	16	10	24	22	22	13,72	FI-RSW-12LM-DK-B-W3			
	.47	5800		.83	.96	1.28	.69	1.28	.63	.39	.94	.87	.87	30.19				
	15	400	M18x1,5	23	27	35	20	37	18,5	10	27	24	27	17,73	FI-RSW-15LM-DK-B-W3			
	.59	5800		.91	1.06	1.38	.79	1.46	.73	.39	1.06	.94	1.06	39.00				
	18	400	M22x1,5	27	28	37	20,5	43	21,5	12	30	27	32	27,01	FI-RSW-18LM-DK-B-W3			
	.71	5800		1.06	1.10	1.46	.81	1.69	.85	.47	1.18	1.06	1.26	59.41				
	22	250	M26x1,5	31	34,5	43,5	27	48	24	16	36	32	36	42,27	FI-RSW-22LM-DK-B-W3			
	.87	3625		1.22	1.36	1.71	1.06	1.89	.94	.63	1.42	1.26	1.42	93.00				
	28	250	M33x2	39	39	48	31,5	59	30,5	18	46	41	41	83,30	FI-RSW-28LM-DK-B-W3			
	1.10	3625		1.54	1.54	1.89	1.24	2.32	1.20	.71	1.81	1.61	1.61	183.26				
	35	250	M42x2	49	46	57	35,5	70	35,5	20	55	50	50	146,51	FI-RSW-35LM-DK-B-W3			
	1.38	3625		1.93	1.81	2.24	1.40	2.76	1.40	.79	2.17	1.97	1.97	322.31				
	42	250	M48x2	55	51	63	40	80	40,5	22	65	55	60	226,97	FI-RSW-42LM-DK-B-W3			
	1.65	3625		2.17	2.01	2.48	1.57	3.15	1.59	.87	2.56	2.17	2.36	499.34				
S	6	500	M12x1,5	17,8	23	31	16	27	13,5	10	19	19	17	10,09	FI-RSW-06SM-DK-B-W3			
	.24	7250		.70	.91	1.22	.63	1.06	.53	.39	.75	.75	.67	22.20				
	8	500	M14x1,5	17,8	23	31	16	27	13,5	10	19	19	19	8,69	FI-RSW-08SM-DK-B-W3			
	.31	7250		.70	.91	1.22	.63	1.06	.53	.39	.75	.75	.75	19.12				
	10	500	M16x1,5	21	25,5	34,5	18	32,5	16	10	24	22	22	14,46	FI-RSW-10SM-DK-B-W3			
	.39	7250		.83	1.00	1.36	.71	1.28	.63	.39	.94	.87	.87	31.81				
	12	400	M18x1,5	23	27	36	19,5	37	18,5	10	27	24	24	19,33	FI-RSW-12SM-DK-B-W3			
	.47	5800		.91	1.06	1.42	.77	1.46	.73	.39	1.06	.94	.94	42.52				
	14	400	M20x1,5	25	30	40	22	41	19,5	12	30	27	27	28,76	FI-RSW-14SM-DK-B-W3			
	.55	5800		.98	1.18	1.57	.87	1.61	.77	.47	1.18	1.06	1.06	63.27				
	16	400	M22x1,5	27	30	40	21,5	43	21,5	12	30	27	30	27,40	FI-RSW-16SM-DK-B-W3			
	.63	5800		1.06	1.18	1.57	.85	1.69	.85	.47	1.18	1.06	1.18	60.28				
	20	315	M27x2	32	36,5	47,5	26	48	24	16	36	32	36	0,00	FI-RSW-20SM-DK-B-W3			
	.79	4568		1.26	1.44	1.87	1.02	1.89	.94	.63	1.42	1.26	1.42	.00				
	25	250	M33x2	39	43	55	31	59	30,5	18	46	41	46	30,63	FI-RSW-25SM-DK-B-W3			
.98	3625		1.54	1.69	2.17	1.22	2.32	1.20	.71	1.81	1.61	1.81	67.39					
30	250	M42x2	49	50	63	36,5	70	35,5	20	55	50	50	149,83	FI-RSW-30SM-DK-B-W3				
1.18	3625		1.93	1.97	2.48	1.44	2.76	1.40	.79	2.17	1.97	1.97	329.62					
38	250	M48x2	55	57	72	41	80	40,5	22	65	55	60	236,07	FI-RSW-38SM-DK-B-W3				
1.50	3625		2.17	2.24	2.83	1.61	3.15	1.59	.87	2.56	2.17	2.36	519.36					

¹ Approximate dimension in assembled condition.

² Weight excluding cutting ring and union nut.

³ Standard scope of delivery: Fitting body only.

Standard seal material is NBR (Buna-N®).



For use with aggressive media and/or at elevated temperatures, please remove the o-ring from the groove located on the banjo bolt prior to installation.

Port acc. to DIN 3852-1 (Form X) / ISO 9974-1

Male threaded studs were designed for female threaded ports in components made of steel. For applications with components made of softer mating materials (e.g. Aluminium), the use of connectors with additionally rolled male threads is recommended.

Please contact STAUFF prior to the assembly for further information.

Ordering Codes
***FI-RSW*-10*L*M*-DK*-B*-W3*-MS**

 * Banjo Elbow (High-Pressure Version) **FI-RSW**

 * Outside Tube Diameter D1 (in mm) **-10**

 * Series Light Series **L**
Heavy Series **S**

 * Thread Type Metric Parallel Thread **M**

If required, please indicate special sizes, e.g. M12x1.5!

 * Seal Type External Metallic Sealing Ring **-DK**

 * Seal Material NBR (Buna-N®) **-B**
FKM (Viton®) **-V**
EPDM **-E**

 * Material Code Steel, zinc/nickel-plated **-W3**

Please contact STAUFF for alternative materials and surface finishings.

 * Assembling / Kitting Fitting body only **—**

 Fitting body supplied with cutting ring and union nut **-MS**

 Fitting body supplied with soft-sealing cutting ring and union nut **-MSV**
Connecting Parts

-  Cutting Ring
Type **FI-DS**
-  Soft-Sealing Cutting Ring
Type **FI-WDDS**
-  Support Sleeve
Type **FI-VH**
-  STAUFF Form Ring
Type **FI-AR**
-  Union Nut
Type **FI-M**
-  37° Flared Tube Fitting Set
Type **FI-AB**

Spare Parts / Accessories

-  External Metallic Sealing Ring
Type **FI-DKR**
-  O-Ring
Type **O-RING**