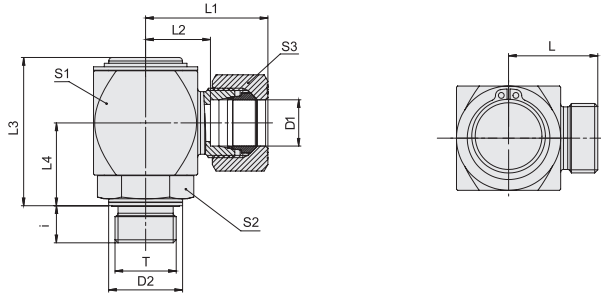
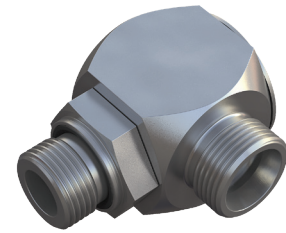


**Swivel Elbow**  
**Type FI-DGWESV-...-M-WD • Series L / S**

**Profile Sealing Ring**
**Metric Parallel Thread**

Series	Tube OD		PN	Dimensions										Torque (N•m / ft•lb)	Weight (kg / lbs) Ca.	Ordering Codes <sup>3</sup>
	(mm / in)	(mm / in)		(mm / in)	T	D2	L	L <sup>1</sup>	L2	L3	L4	i	S1			
L	6	250	M 10 x 1	14	23.5	31.5	16.5	40	21	8	27	19	14	18	15.60	FI-DGWESV-06LM-WD-B-W66
	.24	3625		.55	.93	1.24	.65	1.57	.83	.31	1.06	.75	.55	13.32	34.32	
	6	250	M 12 x 1,5	17	23.5	31.5	16.5	41	22	12	27	19	14	25	16.00	FI-DGWESV-06LM12x1,5-WD-B-W66
	.24	3625		.67	.93	1.24	.65	1.61	.87	.47	1.06	.75	.55	18.50	35.20	
	8	250	M 12 x 1,5	17	23.5	31.5	16.5	41	22	12	27	19	17	25	16.80	FI-DGWESV-08LM-WD-B-W66
	.31	3625		.67	.93	1.24	.65	1.61	.87	.47	1.06	.75	.67	18.50	36.96	
	8	250	M 14 x 1,5	19	25	33	18	46	25	12	30	22	17	45	23.30	FI-DGWESV-08LM14x1,5-WD-B-W66
	.31	3625		.75	.98	1.30	.71	1.81	.98	.47	1.18	.87	.67	33.30	51.26	
	10	250	M 14 x 1,5	19	26	34	19	46	25	12	30	22	19	45	23.00	FI-DGWESV-10LM-WD-B-W66
	.39	3625		.75	1.02	1.34	.75	1.81	.98	.47	1.18	.87	.75	33.30	50.60	
	10	250	M 16 x 1,5	22	27	35	20	48	27	12	32	24	19	60	24.80	FI-DGWESV-10LM16x1,5-WD-B-W66
	.39	3625		.87	1.06	1.38	.79	1.89	1.06	.47	1.26	.94	.75	44.40	54.56	
	12	250	M 16 x 1,5	22	27	35	20	48	27	12	32	24	22	60	27.50	FI-DGWESV-12LM-WD-B-W66
	.47	3625		.87	1.06	1.38	.79	1.89	1.06	.47	1.26	.94	.87	44.40	60.50	
	12	250	M 18 x 1,5	24	29	37	22	55	30	12	36	27	22	100	39.20	FI-DGWESV-12LM18x1,5-WD-B-W66
	.47	3625		.94	1.14	1.46	.87	2.17	1.18	.47	1.42	1.06	.87	74.00	86.24	
	15	250	M 18 x 1,5	24	30	38	23	55	30	12	36	27	27	100	39.00	FI-DGWESV-15LM-WD-B-W66
	.59	3625		.94	1.18	1.50	.91	2.17	1.18	.47	1.42	1.06	1.06	74.00	85.80	
	15	250	M 22 x 1,5	27	32	40	25	59	33	14	40	32	27	125	52.50	FI-DGWESV-15LM22x1,5-WD-B-W66
	.59	3625		1.06	1.26	1.57	.98	2.32	1.30	.55	1.57	1.26	1.06	92.50	115.50	
18	160	M 22 x 1,5	27	32	41	24,5	59	33	14	40	32	32	125	53,50	FI-DGWESV-18LM-WD-B-W66	
.71	2320		1.06	1.26	1.61	.96	2.32	1.30	.55	1.57	1.26	1.26	92.50	117,70		
22	160	M 26 x 1,5	32	36,5	45,5	29	66	35	16	45	36	36	180	70,00	FI-DGWESV-22LM-WD-B-W66	
.87	2320		1.26	1.44	1.79	1.14	2.60	1.38	.63	1.77	1.42	1.42	133,20	154,00		
28	100	M 33 x 2	40	41,5	51	34	78	41	18	55	41	41	300	128,00	FI-DGWESV-28LM-WD-B-W66	
1.10	1450		1.57	1.63	2.01	1.34	3.07	1.61	.71	2.17	1.61	1.61	222,00	281,60		
35	100	M 42 x 2	50	48,5	59,5	38	92	50	20	65	50	50	450	206,00	FI-DGWESV-35LM-WD-B-W66	
1.38	1450		1.97	1.91	2.34	1.50	3.62	1.97	.79	2.56	1.97	1.97	333,00	453,20		
42	100	M 48 x 2	55	53,5	65,5	42,5	102	56	22	75	55	60	540	294,00	FI-DGWESV-42LM-WD-B-W66	
1.65	1450		2.17	2.11	2.58	1.67	4.02	2.20	.87	2.95	2.17	2.36	399,60	646,80		
S	6	400	M 12 x 1,5	17	25,5	33,5	18,5	41	22	12	27	19	17	35	17,20	FI-DGWESV-06SM-WD-B-W66
	.24	5800		.67	1.00	1.32	.73	1.61	.87	.47	1.06	.75	.67	25.90	37.84	
	8	400	M 14 x 1,5	19	25,5	33,5	18,5	41	22	12	27	19	19	55	18,20	FI-DGWESV-08SM-WD-B-W66
	.31	5800		.75	1.00	1.32	.73	1.61	.87	.47	1.06	.75	.75	40.70	40.04	
	10	400	M 16 x 1,5	22	27	36	19,5	46	25	12	30	22	22	70	23,80	FI-DGWESV-10SM-WD-B-W66
	.39	5800		.87	1.06	1.42	.77	1.81	.98	.47	1.18	.87	.87	51.80	52.36	
	12	400	M 18 x 1,5	24	28	37	20,5	48	27	12	32	24	24	90	28,20	FI-DGWESV-12SM-WD-B-W66
	.47	5800		.94	1.10	1.46	.81	1.89	1.06	.47	1.26	.94	.94	66.60	62.04	
	14	400	M 20 x 1,5	26	32	42	24	55	30	14	36	27	30	125	45,00	FI-DGWESV-14SM-WD-B-W66
	.55	5800		1.02	1.26	1.65	.94	2.17	1.18	.55	1.42	1.06	1.18	92.50	99.00	
	16	400	M 22 x 1,5	27	34	44	25,5	59	33	14	40	32	30	135	53,60	FI-DGWESV-16SM-WD-B-W66
	.63	5800		1.06	1.34	1.73	1.00	2.32	1.30	.55	1.57	1.26	1.18	99.90	117.92	
	20	250	M 27 x 2	32	38,5	49,5	28	66	35	16	45	36	36	180	71,50	FI-DGWESV-20SM-WD-B-W66
	.79	3625		1.26	1.52	1.95	1.10	2.60	1.38	.63	1.77	1.42	1.42	133,20	157,30	
	25	250	M 33 x 2	40	45,5	57,5	33,5	78	41	18	55	41	46	310	128,20	FI-DGWESV-25SM-WD-B-W66
	.98	3625		1.57	1.79	2.26	1.32	3.07	1.61	.71	2.17	1.61	1.81	229.40	282.04	
30	250	M 42 x 2	50	52,5	65,5	39	92	51	20	65	50	50	470	210,00	FI-DGWESV-30SM-WD-B-W66	
1.18	3625		1.97	2.07	2.58	1.54	3.62	2.01	.79	2.56	1.97	1.97	347.80	462.00		
38	250	M 48 x 2	55	59,5	74,5	43,5	102	56	22	75	55	60	800	300,00	FI-DGWESV-38SM-WD-B-W66	
1.50	3625		2.17	2.34	2.93	1.71	4.02	2.20	.87	2.95	2.17	2.36	592.00	660.00		

**Ordering Codes**
**\*FI-DGWESV\*-10\*L\*M\*-WD\*-B\*-W66\*-MS**

- \* Swivel Elbow **FI-DGWESV**
- \* Outside Tube Diameter D1 (in mm) **-10**
- \* Series Light Series **L**  
Heavy Series **S**
- \* Thread Type Metric Parallel Thread **M**
- If required, please indicate special sizes, e.g. M27x2!
- \* Seal Type Profile Sealing Ring **-WD**
- \* Seal Material NBR (Buna-N®) **-B**  
FKM (Viton®) **-V**  
EPDM **-E**
- \* Material Code Steel, zinc-plated and thick-film-passivated **-W66**

Please contact STAUFF for alternative materials and surface finishings.

- \* Assembling / Kitting Fitting body only **—**
- Fitting body supplied with cutting ring and union nut **-MS**
- Fitting body supplied with soft-sealing cutting ring and union nut **-MSV**

**Connecting Parts**

- Cutting Ring Type **FI-DS**
- Soft-Sealing Cutting Ring Type **FI-WDDS**
- Support Sleeve Type **FI-VH**
- STAUFF Form Ring Type **FI-AR**
- Union Nut Type **FI-M**
- 37° Flared Tube Fitting Set Type **FI-AB**

**Spare Parts / Accessories**

- Profile Sealing Ring Type **WDG**

<sup>1</sup> Approximate dimension in assembled condition.

<sup>2</sup> Weight excluding cutting ring and union nut.

<sup>3</sup> Standard scope of delivery: Fitting body only.

Standard seal material is NBR (Buna-N®).

Male stud acc. to ISO 9974-2 (Type E)

Port acc. to ISO 9974-1

Torque recommendations for Steel mating material.

**Maximum Number of Revolutions per Minute for Permanent Operation**

Dimension S1	(mm)	27	30	32	36	40	45	55	65	75
	(in)	1.06	1.18	1.26	1.42	1.57	1.77	2.17	2.56	2.95
Revolutions Per Minute		6	3	3	1	0,6	0,5	0,4	0,2	0,2

Higher number of revolutions per minute possible when used temporarily / non-permanently. Recommendations for use with hydraulic oil at a static working pressure not exceeding 200 bar / 2900 PSI.

Male threaded studs were designed for female threaded ports in components made of steel. For applications with components made of softer mating materials (e.g. Aluminium), the use of connectors with additionally rolled male threads is recommended.

Please contact STAUFF prior to the assembly for further information.