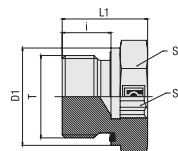
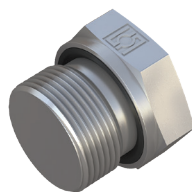


Blanking Screw for Ports (Heavy Duty) Type FI-VSV-...-R-WD



Ordering Codes

FI-VSV-R*1/2*-WD*-B*-W3

* Blanking Screw for Ports		FI-VSV
* Thread Type	Whitworth Parallel Pipe Thread (BSPP)	R
* Thread Size	acc. to dimension table	1/2
Please always indicate thread sizes, e.g. 1/2!		
* Seal Type	Profile Sealing Ring	-WD
* Seal Material	NBR (Buna-N®) FKM (Viton®) EPDM	-B -V -E
* Material Code	Steel, zinc/nickel-plated	-W3

Please contact STAUFF for alternative materials and surface finishings.

Spare Parts / Accessories



Profile Sealing Ring
Type **WDG**

Whitworth Parallel Pipe Thread (BSPP)

Profile Sealing Ring

PN (^{bar} / _{PSI})	Dimensions (^{mm} / _{in})						Torque (^{N-m} / _{ft-lb})	Weight (^{kg} / _{lbs}) ca. per 100	Ordering Codes
	Thread T	D1	L1	i	S1	S2			
400	G 1/8	14	18	8	5	14	18	1,56	FI-VSV-R1/8-WD-B-W3
5800		.55	.71	.31	.20	.55	13.3	3.43	
400	G 1/4	19	20	12	6	19	33	2,73	FI-VSV-R1/4-WD-B-W3
5800		.75	.79	.47	.24	.75	24.4	6.00	
400	G 3/8	22	22	12	8	22	70	4,48	FI-VSV-R3/8-WD-B-W3
5800		.87	.87	.47	.31	.87	51.8	9.85	
400	G 1/2	27	24	14	10	27	90	7,27	FI-VSV-R1/2-WD-B-W3
5800		1.06	.94	.55	.39	1.06	66.6	15.98	
400	G 3/4	32	28	16	12	32	181	13,02	FI-VSV-R3/4-WD-B-W3
5800		1.26	1.10	.63	.47	1.26	133.2	28.64	
400	G 1	46	33	18	17	46	250	23,80	FI-VSV-R1-WD-B-W3
5800		1.81	1.30	.71	.67	1.81	185.0	52.36	
400	G 1 1/4	57	38	20	22	60	400	42,00	FI-VSV-R1 1/4-WD-B-W3
5800		2.24	1.50	.79	.87	2.36	296.0	92.40	
400	G 1 1/2	64	40	22	24	65	500	55,60	FI-VSV-R1 1/2-WD-B-W3
5800		2.52	1.57	.87	.94	2.56	370.0	122.32	

Standard seal material is NBR (Buna-N®).

Male stud acc. to ISO 1179-2 (Type E)
Port acc. to ISO 1179-1

Male threaded studs were designed for female threaded ports in components made of steel. For applications with components made of softer mating materials (e.g. Aluminium), the use of connectors with additionally rolled male threads is recommended.

Please contact STAUFF prior to the assembly for further information.

Torque recommendations for Steel mating material.