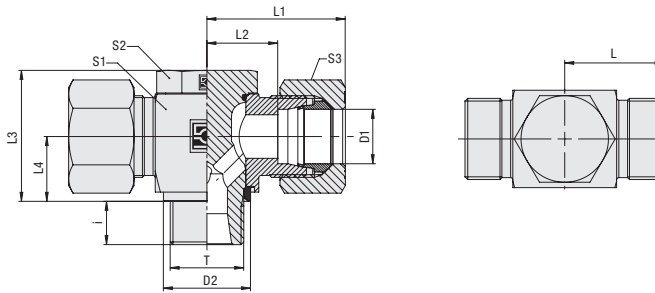


Banjo Tee (High-Pressure Version)
Type FI-RST-...-R-DK ▪ Series L / S



Whitworth Parallel Pipe Thread (BSPP)

External Metallic Sealing Ring

Ordering Codes

***FI-RST*-10*L*R*-DK*-B*-W3*-MS**

* Banjo Tee (High-Pressure Version) **FI-RST**

* Outside Tube Diameter D1 (in mm) **-10**

* Series Light Series **L**
 Heavy Series **S**

* Thread Type Whitworth Parallel Pipe Thread (BSPP) **R**

If required, please indicate special sizes, e.g. R1/8!

* Seal Type External Metallic Sealing Ring **-DK**

* Seal Material NBR (Buna-N®) **-B**
 FKM (Viton®) **-V**
 EPDM **-E**

* Material Code Steel, zinc/nickel-plated **-W3**

Please contact STAUFF for alternative materials and surface finishings.

* Assembling / Kitting Fitting body only **—**

Fitting body supplied with cutting ring and union nut **-MS**

Fitting body supplied with soft-sealing cutting ring and union nut **-MSV**

Connecting Parts

-  Cutting Ring
Type **FI-DS**
-  Soft-Sealing Cutting Ring
Type **FI-WDDS**
-  Support Sleeve
Type **FI-VH**
-  STAUFF Form Ring
Type **FI-AR**
-  Union Nut
Type **FI-M**
-  37° Flared Tube Fitting Set
Type **FI-AB**

Spare Parts / Accessories

-  External Metallic Sealing Ring
Type **FI-DKR**
-  O-Ring
Type **O-RING**

Series	Tube OD (mm/in)	PB (mm/in)	Dimensions										Weight (kg/lbs) ca. per 100 ²	Ordering Codes ³	
			Thread	T	D2	L	L1 ¹	L2	L3	L4	i	S1			S2
L	6	500	G 1/8	13	20	28	13	21	10,5	8	14	14	14	4,57	FI-RST-06LR-DK-B-W3
	.24	7250		.51	.79	1.10	.51	.83	.41	.31	.55	.55	.55	10,04	
	8	500	G 1/4	17,8	21	29	14	27	13,5	10	19	19	17	8,60	FI-RST-08LR-DK-B-W3
	.31	7250		.70	.83	1.14	.55	1.06	.53	.39	.75	.75	.67	18,92	
	10	500	G 1/4	17,8	22	30	15	27	13,5	10	19	19	19	8,93	FI-RST-10LR-DK-B-W3
	.39	7250		.70	.87	1.18	.59	1.06	.53	.39	.75	.75	.75	19,65	
	12	400	G 3/8	22	24,5	32,5	17,5	32,5	16	12	24	22	22	15,04	FI-RST-12LR-DK-B-W3
	.47	5800		.87	.96	1.28	.69	1.28	.63	.47	.94	.87	.87	33,08	
	15	400	G 1/2	26	27	35	21	43	19,5	14	30	27	27	30,15	FI-RST-15LR-DK-B-W3
	.59	5800		1.02	1.06	1.38	.83	1.69	.77	.55	1.18	1.06	1.06	66,33	
	18	400	G 1/2	26	28	37	20,5	43	21,5	12	30	27	32	31,25	FI-RST-18LR-DK-B-W3
	.71	5800		1.02	1.10	1.46	.81	1.69	.85	.47	1.18	1.06	1.26	68,75	
	22	250	G 3/4	32	34,5	43,5	27	48	24	16	36	32	36	46,23	FI-RST-22LR-DK-B-W3
	.87	3625		1.26	1.36	1.71	1.06	1.89	.94	.63	1.42	1.26	1.42	101,70	
	28	250	G 1	39	39	48	31,5	59	30,5	18	46	41	41	80,19	FI-RST-28LR-DK-B-W3
	1.10	3625		1.54	1.54	1.89	1.24	2.32	1.20	.71	1.81	1.61	1.61	176,41	
	35	250	G 1 1/4	49	46	57	35,5	70	35,5	20	55	50	50	145,46	FI-RST-35LR-DK-B-W3
	1.38	3625		1.93	1.81	2.24	1.40	2.76	1.40	.79	2.17	1.97	1.97	320,00	
42	250	G 1 1/2	55	51	63	40	80	40,5	22	65	55	60	217,14	FI-RST-42LR-DK-B-W3	
1.65	3625		2.17	2.01	2.48	1.57	3.15	1.59	.87	2.56	2.17	2.36	477,71		
S	6	500	G 1/4	17,8	23	31	16	27	13,5	10	19	19	17	9,48	FI-RST-06SR-DK-B-W3
	.24	7250		.70	.91	1.22	.63	1.06	.53	.39	.75	.75	.67	20,86	
	8	500	G 1/4	17,8	23	31	16	27	13,5	10	19	19	19	9,97	FI-RST-08SR-DK-B-W3
	.31	7250		.70	.91	1.22	.63	1.06	.53	.39	.75	.75	.75	21,93	
	10	500	G 3/8	22	25,5	34,5	18	32,5	16	10	24	22	22	19,10	FI-RST-10SR-DK-B-W3
	.39	7250		.87	1.00	1.36	.71	1.28	.63	.39	.94	.87	.87	42,02	
	12	400	G 3/8	22	27	36	18	32,5	16	10	24	22	24	16,38	FI-RST-12SR-DK-B-W3
	.47	5800		.87	1.06	1.42	.71	1.28	.63	.39	.94	.87	.94	36,03	
	14	400	G 1/2	26	30	40	22	41	19,5	14	30	27	27	91,00	FI-RST-14SR-DK-B-W3
	.55	5800		1.02	1.18	1.57	.87	1.61	.77	.55	1.18	1.06	1.06	200,20	
	16	400	G 1/2	26	30	40	21,5	43	21,5	12	30	27	30	31,85	FI-RST-16SR-DK-B-W3
	.63	5800		1.02	1.18	1.57	.85	1.69	.85	.47	1.18	1.06	1.18	70,08	
	20	315	G 3/4	32	36,5	47,5	26	48	24	16	36	32	36	48,45	FI-RST-20SR-DK-B-W3
	.79	4568		1.26	1.44	1.87	1.02	1.89	.94	.63	1.42	1.26	1.42	106,58	
	25	250	G 1	39	43	55	31	59	30,5	18	46	41	46	93,55	FI-RST-25SR-DK-B-W3
	.98	3625		1.54	1.69	2.17	1.22	2.32	1.20	.71	1.81	1.61	1.81	205,80	
	30	250	G 1 1/4	49	50	63	36,5	70	35,5	20	55	50	50	153,59	FI-RST-30SR-DK-B-W3
	1.18	3625		1.93	1.97	2.48	1.44	2.76	1.40	.79	2.17	1.97	1.97	337,91	
38	250	G 1 1/2	55	57	72	41	80	40,5	22	65	55	60	236,22	FI-RST-38SR-DK-B-W3	
1.50	3625		2.17	2.24	2.83	1.61	3.15	1.59	.87	2.56	2.17	2.36	519,69		

¹ Approximate dimension in assembled condition.

² Weight excluding cutting ring and union nut.

³ Standard scope of delivery: Fitting body only.

Standard seal material is NBR (Buna-N®).



For use with aggressive media and/or at elevated temperatures, please remove the o-ring from the groove located on the banjo bolt prior to installation.

Port acc. to DIN 3852-2 (Form X) / ISO 1179-1

Male threaded studs were designed for female threaded ports in components made of steel. For applications with components made of softer mating materials (e.g. Aluminium), the use of connectors with additionally rolled male threads is recommended.

Please contact STAUFF prior to the assembly for further information.