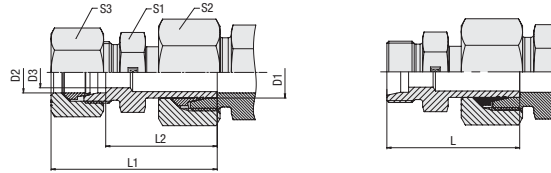
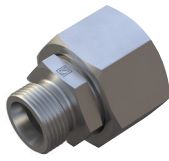


Straight Standpipe Reducer
Type FI-REDS • Series L



Ordering Codes

***FI-REDS*-10/*08*L*-W3*-SV-MS**

- * Straight Standpipe Reducer **FI-REDS**
- * Outside Tube Diameter D1 (in mm) **-10**
- * Outside Tube Diameter D2 (in mm) **08**
- * Series **L**
Light Series (pages 138/139)
Heavy Series (pages 140/141) **S**
- * Material Code **-W3**
Steel, zinc/nickel-plated
- Please contact STAUFF for alternative materials and surface finishings.
- * Assembling / Kitting **-SV**
Fitting body assembled with cutting ring and union nut on the standpipe
- SV-MS**
Fitting body assembled with cutting rings and union nuts on all ends

Connecting Parts

-  Cutting Ring
Type **FI-DS**
-  Soft-Sealing Cutting Ring
Type **FI-WDDS**
-  Support Sleeve
Type **FI-VH**
-  STAUFF Form Ring
Type **FI-AR**
-  Union Nut
Type **FI-M**
-  37° Flared Tube Fitting Set
Type **FI-AB**

Series	Tube OD (mm/in)		PN (bar/psi)	Dimensions (mm/in)							Weight (kg/lbs) ca. per 100 ²	Ordering Codes ³
	D1	D2		D3	L	L1 ¹	L2	S1	S2	S3		
L	8	6	500	4	33	40,5	27,5	12	17	14	3,15	FI-REDS-08/06L-W3-SV
	.31	.24	7250	.16	1.30	1.59	1.08	.47	.67	.55	6.93	
	10	6	500	4	34	41,5	28,5	12	19	14	4,00	FI-REDS-10/06L-W3-SV
	.39	.24	7250	.16	1.34	1.63	1.12	.47	.75	.55	8.79	
	10	8	500	6	35	42,5	28,5	14	19	17	3,97	FI-REDS-10/08L-W3-SV
	.39	.31	7250	.24	1.38	1.67	1.12	.55	.75	.67	8.74	
	12	6	400	4	37	44,5	28	14	22	14	4,75	FI-REDS-12/06L-W3-SV
	.47	.24	5800	.16	1.46	1.75	1.10	.55	.87	.55	10.44	
	12	8	400	6	36	44,5	29	14	22	17	5,35	FI-REDS-12/08L-W3-SV
	.47	.31	5800	.24	1.42	1.75	1.14	.55	.87	.67	11.78	
	12	10	400	8	37	45,5	30	17	22	19	5,48	FI-REDS-12/10L-W3-SV
	.47	.39	5800	.31	1.46	1.79	1.18	.67	.87	.75	12.05	
	15	6	400	4	38	46	28	17	27	14	7,53	FI-REDS-15/06L-W3-SV
	.59	.24	5800	.16	1.50	1.81	1.10	.67	1.06	.55	16.57	
	15	8	400	6	38	46	29	17	27	17	7,73	FI-REDS-15/08L-W3-SV
	.59	.31	5800	.24	1.50	1.81	1.14	.67	1.06	.67	17.01	
	15	10	400	8	37	47	30	17	27	19	8,24	FI-REDS-15/10L-W3-SV
	.59	.39	5800	.31	1.46	1.85	1.18	.67	1.06	.75	18.12	
	15	12	400	10	38	48	31	19	27	22	8,27	FI-REDS-15/12L-W3-SV
	.59	.47	5800	.39	1.50	1.89	1.22	.75	1.06	.87	18.19	
	18	6	400	4	37,5	45,5	30	19	32	14	10,36	FI-REDS-18/06L-W3-SV
	.71	.24	5800	.16	1.48	1.79	1.18	.75	1.26	.55	22.80	
	18	8	400	6	37,5	45,5	31	19	32	17	10,84	FI-REDS-18/08L-W3-SV
	.71	.31	5800	.24	1.48	1.79	1.22	.75	1.26	.67	23.85	
18	10	400	8	39	46,5	32	19	32	19	10,98	FI-REDS-18/10L-W3-SV	
.71	.39	5800	.31	1.54	1.83	1.26	.75	1.26	.75	24.16		
18	12	400	10	40,5	46,5	33,5	19	32	22	12,01	FI-REDS-18/12L-W3-SV	
.71	.47	5800	.39	1.59	1.83	1.32	.75	1.26	.87	26.43		
18	15	400	12	41	47,5	34	24	32	27	12,76	FI-REDS-18/15L-W3-SV	
.71	.59	5800	.47	1.61	1.87	1.34	.94	1.26	1.06	28.07		
22	6	250	4	39,5	47	32	24	36	14	13,75	FI-REDS-22/06L-W3-SV	
.87	.24	3625	.16	1.56	1.85	1.26	.94	1.42	.55	30.25		
22	8	250	6	43	46,5	34	24	36	17	19,87	FI-REDS-22/08L-W3-SV	
.87	.31	3625	.24	1.69	1.83	1.34	.94	1.42	.67	43.72		
22	10	250	8	41	47,5	34	24	36	19	15,17	FI-REDS-22/10L-W3-SV	
.87	.39	3625	.31	1.61	1.87	1.34	.94	1.42	.75	33.37		
22	12	250	10	39,5	47,5	34,5	24	36	22	15,45	FI-REDS-22/12L-W3-SV	
.87	.47	3625	.39	1.56	1.87	1.36	.94	1.42	.87	34.00		
22	15	250	12	40,5	48,5	36	24	36	27	16,02	FI-REDS-22/15L-W3-SV	
.87	.59	3625	.47	1.59	1.91	1.42	.94	1.42	1.06	35.24		
22	18	250	15	44	50,5	36,5	27	36	32	17,93	FI-REDS-22/18L-W3-SV	
.87	.71	3625	.59	1.73	1.99	1.44	1.06	1.42	1.26	39.45		

¹ Approximate dimension in assembled condition.

² Weight including cutting ring and union nut on the standpipe.

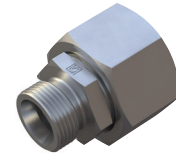
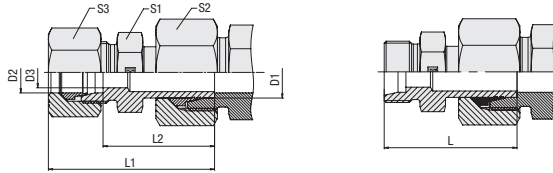
³ Standard scope of delivery: Fitting body assembled with cutting ring and union nut on the standpipe.

Please note: Standpipes are always factory-assembled with cutting rings and union nuts.

The union nut assembled on the standpipe has to be tightened by only 1/12 a turn (equivalent to 30°) beyond the fixed point.



**Straight Standpipe Reducer
Type FI-REDS ■ Series L**



Series	Tube OD (mm/in)		PN (bar/psi)	Dimensions (mm/in)							Weight (^{kg} /lbs) ca. per 100 ²	Ordering Codes ³
	D1	D2		D3	L	L1 ¹	L2	S1	S2	S3		
L	28	6	250	4	41	49	34,5	30	41	14	18,12	FI-REDS-28/06L-W3-SV
	1.10	.24	3625	.16	1.61	1.93	1.36	1.18	1.61	.55	39.85	
L	28	8	250	6	42	50	34,5	30	41	17	18,24	FI-REDS-28/08L-W3-SV
	1.10	.31	3625	.24	1.65	1.97	1.36	1.18	1.61	.67	40.12	
L	28	10	250	8	41	49	35,5	30	41	19	18,45	FI-REDS-28/10L-W3-SV
	1.10	.39	3625	.31	1.61	1.93	1.40	1.18	1.61	.75	40.58	
L	28	12	250	10	41	49	35,5	30	41	22	19,79	FI-REDS-28/12L-W3-SV
	1.10	.47	3625	.39	1.61	1.93	1.40	1.18	1.61	.87	43.54	
L	28	15	250	12	42	50	36,5	30	41	27	20,30	FI-REDS-28/15L-W3-SV
	1.10	.59	3625	.47	1.65	1.97	1.44	1.18	1.61	1.06	44.66	
L	28	18	250	15	43,5	52	36	30	41	32	20,48	FI-REDS-28/18L-W3-SV
	1.10	.71	3625	.59	1.71	2.05	1.42	1.18	1.61	1.26	45.05	
L	28	22	250	19	45,5	54	38	32	41	36	23,25	FI-REDS-28/22L-W3-SV
	1.10	.87	3625	.75	1.79	2.13	1.50	1.26	1.61	1.42	51.14	
L	35	6	250	4	48	56	40,5	36	50	14	29,53	FI-REDS-35/06L-W3-SV
	1.38	.24	3625	.16	1.89	2.20	1.59	1.42	1.97	.55	64.97	
L	35	8	250	6	48	56	40,5	36	50	17	28,78	FI-REDS-35/08L-W3-SV
	1.38	.31	3625	.24	1.89	2.20	1.59	1.42	1.97	.67	63.32	
L	35	10	250	8	49	57	41,5	36	50	19	31,70	FI-REDS-35/10L-W3-SV
	1.38	.39	3625	.31	1.93	2.24	1.63	1.42	1.97	.75	69.74	
L	35	12	250	10	47	55	41,5	36	50	22	32,26	FI-REDS-35/12L-W3-SV
	1.38	.47	3625	.39	1.85	2.17	1.63	1.42	1.97	.87	70.97	
L	35	15	250	12	48,5	56,5	42,5	36	50	27	28,97	FI-REDS-35/15L-W3-SV
	1.38	.59	3625	.47	1.91	2.22	1.67	1.42	1.97	1.06	63.73	
L	35	18	250	15	49,5	58,5	42	36	50	32	32,20	FI-REDS-35/18L-W3-SV
	1.38	.71	3625	.59	1.95	2.30	1.65	1.42	1.97	1.26	70.83	
L	35	22	250	19	51,5	60,5	44	36	50	36	32,94	FI-REDS-35/22L-W3-SV
	1.38	.87	3625	.75	2.03	2.38	1.73	1.42	1.97	1.42	72.47	
L	35	28	250	24	52,5	61,5	44	41	50	41	34,18	FI-REDS-35/28L-W3-SV
	1.38	1.10	3625	.94	2.07	2.42	1.73	1.61	1.97	1.61	75.19	
L	42	10	250	8	51	59	45	46	60	19	45,84	FI-REDS-42/10L-W3-SV
	1.65	.39	3625	.31	2.01	2.32	1.77	1.81	2.36	.75	100.85	
L	42	12	250	10	52	60	45	46	60	22	56,37	FI-REDS-42/12L-W3-SV
	1.65	.47	3625	.39	2.05	2.36	1.77	1.81	2.36	.87	124.01	
L	42	15	250	12	52	60	46	46	60	27	58,28	FI-REDS-42/15L-W3-SV
	1.65	.59	3625	.47	2.05	2.36	1.81	1.81	2.36	1.06	115.06	
L	42	18	250	15	53	61	45,5	46	60	32	51,80	FI-REDS-42/18L-W3-SV
	1.65	.71	3625	.59	2.09	2.40	1.79	1.81	2.36	1.26	113.96	
L	42	22	250	19	54	63	47,5	46	60	36	58,28	FI-REDS-42/22L-W3-SV
	1.65	.87	3625	.75	2.13	2.48	1.87	1.81	2.36	1.42	128.22	
L	42	28	250	24	55	64	47,5	46	60	41	52,40	FI-REDS-42/28L-W3-SV
	1.65	1.10	3625	.94	2.17	2.52	1.87	1.81	2.36	1.61	115.28	
L	42	35	250	30	57	69	46,5	46	60	50	53,30	FI-REDS-42/35L-W3-SV
	1.65	1.38	3625	1.18	2.24	2.72	1.83	1.81	2.36	1.97	117.26	

Ordering Codes

***FI-REDS*-10/*08*L*-W3*-SV-MS**

- * Straight Standpipe Reducer FI-REDS
- * Outside Tube Diameter D1 (in mm) -10
- * Outside Tube Diameter D2 (in mm) 08
- * Series Light Series (pages 138/139) L
Heavy Series (pages 140/141) S
- * Material Code Steel, zinc/nickel-plated -W3

Please contact STAUFF for alternative materials and surface finishings.

- * Assembling / Kitting Fitting body assembled with cutting ring and union nut on the standpipe -SV
Fitting body assembled with cutting rings and union nuts on all ends -SV-MS

Connecting Parts

-  Cutting Ring
Type **FI-DS**
-  Soft-Sealing Cutting Ring
Type **FI-WDDS**
-  Support Sleeve
Type **FI-VH**
-  STAUFF Form Ring
Type **FI-AR**
-  Union Nut
Type **FI-M**
-  37° Flared Tube Fitting Set
Type **FI-AB**

¹ Approximate dimension in assembled condition.
² Weight including cutting ring and union nut on the standpipe.
³ Standard scope of delivery: Fitting body assembled with cutting ring and union nut on the standpipe.

Please note: Standpipes are always factory-assembled with cutting rings and union nuts.

The union nut assembled on the standpipe has to be tightened by only 1/12 a turn (equivalent to 30°) beyond the fixed point.

