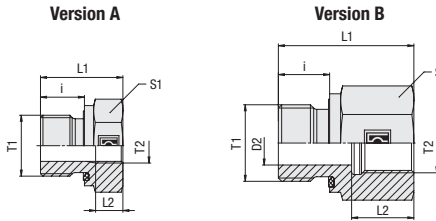
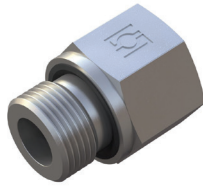


Thread Reducer
Type FI-RED-...-R-WD



Male / Female Whitworth Parallel Pipe Thread (BSPP)

Profile Sealing Ring

Ordering Codes

***FI-RED*-R*1/2*-WD*-R*3/8*-B*-W3**

- * Thread Reducer **FI-RED**
- * Thread Type T1 Whitworth Parallel Pipe Thread (BSPP) **R**
- * Thread Size T1 acc. to dimension table **1/2**
Please always indicate thread sizes, e.g. 1/2!
- * Seal Type Profile Sealing Ring **-WD**
- * Thread Type T2 Whitworth Parallel Pipe Thread (BSPP) **R**
- * Thread Size T2 acc. to dimension table **3/8**
Please always indicate thread sizes, e.g. 3/8!
- * Seal Material NBR (Buna-N®) **-B**
FKM (Viton®) **-V**
EPDM **-E**
- * Material Code Steel, zinc/nickel-plated **-W3**
Please contact STAUFF for alternative materials and surface finishings.

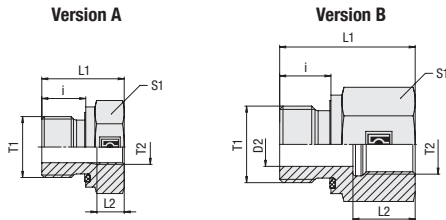
PN (^{bar} /PSI)	Dimensions (^{mm} / ⁱⁿ)							Version	Weight (^{kg} / ^{lbs}) ca. per 100	Ordering Codes
	Thread T1	Thread T2	D2	L1	L2	i	S1			
630	G 1/8	G 1/4	4	31	17	8	19	B	4,30	FI-RED-R1/8-WD-R1/4-B-W3
9135			.16	1.22	.67	.31	.75		9,46	
630	G 1/8	G 3/8	4	32	17	8	24	B	6,70	FI-RED-R1/8-WD-R3/8-B-W3
9135			.16	1.26	.67	.31	.94		14,74	
400	G 1/4	G 1/8	5	29	12	12	19	B	4,40	FI-RED-R1/4-WD-R1/8-B-W3
5800			.20	1.14	.47	.47	.75		9,68	
400	G 1/4	G 3/8	5	36	17	12	24	B	7,30	FI-RED-R1/4-WD-R3/8-B-W3
5800			.20	1.42	.67	.47	.94		16,06	
400	G 1/4	G 1/2	5	40	20	12	30	B	12,80	FI-RED-R1/4-WD-R1/2-B-W3
5800			.20	1.57	.79	.47	1.18		28,16	
400	G 1/4	G 3/4	5	43	22	12	36	B	18,80	FI-RED-R1/4-WD-R3/4-B-W3
5800			.20	1.69	.87	.47	1.42		41,36	
400	G 3/8	G 1/8		22,5	8,5	12	22	A	4,20	FI-RED-R3/8-WD-R1/8-B-W3
5800			.89	.33	.47	.87	9,24			
400	G 3/8	G 1/4	8	36	17	12	22	B	7,40	FI-RED-R3/8-WD-R1/4-B-W3
5800			.31	1.42	.67	.47	.87		16,28	
630	G 3/8	G 1/2	8	41	20	12	30	B	13,60	FI-RED-R3/8-WD-R1/2-B-W3
9135			.31	1.61	.79	.47	1.18		29,92	
400	G 3/8	G 3/4	8	44	22	12	36	B	19,70	FI-RED-R3/8-WD-R3/4-B-W3
5800			.31	1.73	.87	.47	1.42		43,34	
400	G 1/2	G 1/8		24	8	14	27	A	7,00	FI-RED-R1/2-WD-R1/8-B-W3
5800			.94	.31	.55	1.06	15,40			
400	G 1/2	G 1/4		24	12	14	27	A	6,20	FI-RED-R1/2-WD-R1/4-B-W3
5800			.94	.47	.55	1.06	13,64			
400	G 1/2	G 3/8	12	37	17	14	27	B	10,40	FI-RED-R1/2-WD-R3/8-B-W3
5800			.47	1.46	.67	.55	1.06		22,88	
400	G 1/2	G 3/4	12	46	22	14	36	B	20,10	FI-RED-R1/2-WD-R3/4-B-W3
5800			.47	1.81	.87	.55	1.42		44,22	
250	G 1/2	G 1	12	49	24,5	14	41	B	25,10	FI-RED-R1/2-WD-R1-B-W3
3625			.47	1.93	.96	.55	1.61		55,22	
250	G 1/2	G 1 1/4	10	53	26,5	14	55	B	52,10	FI-RED-R1/2-WD-R1-1/4-B-W3
3625			.39	2.09	1.04	.55	2.17		114,62	

Spare Parts / Accessories

Profile Sealing Ring
Type **WDG**

Standard seal material is NBR (Buna-N®).

Male threaded studs were designed for female threaded ports in components made of steel. For applications with components made of softer mating materials (e.g. Aluminium), the use of connectors with additionally rolled male threads is recommended.
Please contact STAUFF prior to the assembly for further information.



**Thread Reducer
Type FI-RED-...-R-WD**



Profile Sealing Ring Male / Female Whitworth Parallel Pipe Thread (BSPP)

PN (bar/psi)	Dimensions (mm/in)		D2	L1	L2	i	S1	Version	Weight (kg/lbs) ca. per 100	Ordering Codes
	Thread T1	Thread T2								
315	G 3/4	G 1/4		26	12,5	16	32	A	10,90	FI-RED-R3/4-WD-R1/4-B-W3
4567,5				1.02	.49	.63	1.26		23.98	
315	G 3/4	G 3/8		26	12,5	16	32	A	9,40	FI-RED-R3/4-WD-R3/8-B-W3
4567,5				1.02	.49	.63	1.26		20.68	
400	G 3/4	G 1/2	16	43	20	16	32	B	16,90	FI-RED-R3/4-WD-R1/2-B-W3
5800			.63	1.69	.79	.63	1.26		37.18	
400	G 3/4	G 1	16	51	24,5	16	41	B	26,60	FI-RED-R3/4-WD-R1-B-W3
5800			.63	2.01	.96	.63	1.61		58.52	
250	G 3/4	G 1 1/4	16	55	26,5	16	55	B	52,70	FI-RED-R3/4-WD-R1-1/4-B-W3
3625			.63	2.17	1.04	.63	2.17		115.94	
250	G 3/4	G 1 1/2	16	57	28,5	16	60	B	61,10	FI-RED-R3/4-WD-R1-1/2-B-W3
3625			.63	2.24	1.12	.63	2.36		134.42	
400	G 1	G 1/4		29	12,5	18	41	A	20,70	FI-RED-R1-WD-R1/4-B-W3
5800				1.14	.49	.71	1.61		45.54	
400	G 1	G 3/8		29	12,5	18	41	A	19,10	FI-RED-R1-WD-R3/8-B-W3
5800				1.14	.49	.71	1.61		42.02	
400	G 1	G 1/2		29	14,5	18	41	A	16,80	FI-RED-R1-WD-R1/2-B-W3
5800				1.14	.57	.71	1.61		36.96	
400	G 1	G 3/4	20	49	22	18	41	B	31,30	FI-RED-R1-WD-R3/4-B-W3
5800			.79	1.93	.87	.71	1.61		68.86	
250	G 1	G 1 1/4	20	57	26,5	18	55	B	58,80	FI-RED-R1-WD-R1-1/4-B-W3
3625			.79	2.24	1.04	.71	2.17		129.36	
250	G 1	G 1 1/2	20	59	28,5	18	60	B	63,90	FI-RED-R1-WD-R1-1/2-B-W3
3625			.79	2.32	1.12	.71	2.36		140.58	
315	G 1 1/4	G 1/2		32	14,5	20	50	A	33,00	FI-RED-R1-1/4-WD-R1/2-B-W3
4567,5				1.26	.57	.79	1.97		72.60	
315	G 1 1/4	G 3/4		32	16,5	20	50	A	28,30	FI-RED-R1-1/4-WD-R3/4-B-W3
4567,5				1.26	.65	.79	1.97		62.26	
315	G 1 1/4	G 1	25	53	24,5	20	50	B	50,60	FI-RED-R1-1/4-WD-R1-B-W3
4567,5			.98	2.09	.96	.79	1.97		111.32	
250	G 1 1/4	G 1 1/2	25	60	28,5	20	60	B	67,30	FI-RED-R1-1/4-WD-R1-1/2-B-W3
3625			.98	2.36	1.12	.79	2.36		148.06	
250	G 1 1/2	G 1/2		36	14,5	22	55	A	49,60	FI-RED-R1-1/2-WD-R1/2-B-W3
3625				1.42	.57	.87	2.17		109.12	
250	G 1 1/2	G 3/4		36	16	22	55	A	44,40	FI-RED-R1-1/2-WD-R3/4-B-W3
3625				1.42	.63	.87	2.17		97.68	
250	G 1 1/2	G 1		36	18,5	22	55	A	36,90	FI-RED-R1-1/2-WD-R1-B-W3
3625				1.42	.73	.87	2.17		81.18	
250	G 1 1/2	G 1 1/4		58	26,5	22	55	A	57,80	FI-RED-R1-1/2-WD-R1-1/4-B-W3
3625				2.28	1.04	.87	2.17		127.16	
160	G 2	G 1 1/4		48	20,5	24	75	A	93,70	FI-RED-R2-WD-R1-1/4-B-W3
2320				1.89	.81	.94	2.95		206.14	
160	G 2	G 1 1/2	40	65	29	24	75	B	132,20	FI-RED-R2-WD-R1-1/2-B-W3
2320			1.57	2.56	1.14	.94	2.95		290.84	

Standard seal material is NBR (Buna-N®).

Male threaded studs were designed for female threaded ports in components made of steel. For applications with components made of softer mating materials (e.g. Aluminium), the use of connectors with additionally rolled male threads is recommended. Please contact STAUFF prior to the assembly for further information.

Ordering Codes

***FI-RED*-R*1/2*-WD*-R*3/8*-B*-W3**

- * Thread Reducer FI-RED
- * Thread Type T1 Whitworth Parallel Pipe Thread (BSPP) R
- * Thread Size T1 acc. to dimension table 1/2
- Please always indicate thread sizes, e.g. 1/2!
- * Seal Type Profile Sealing Ring -WD
- * Thread Type T2 Whitworth Parallel Pipe Thread (BSPP) R
- * Thread Size T2 acc. to dimension table 3/8
- Please always indicate thread sizes, e.g. 3/8!
- * Seal Material NBR (Buna-N®) -B
FKM (Viton®) -V
EPDM -E
- * Material Code Steel, zinc/nickel-plated -W3

Spare Parts / Accessories



Profile Sealing Ring
Type WDG