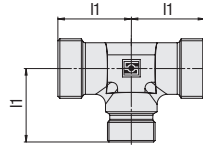
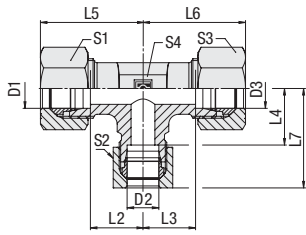


**Tee Reducer**  
**Type FI-T • Series L**



Sequence of connections  
in the ordering codes for  
tee reducers:



Series	Tube OD (mm/in)			PN (bar/psi)	Dimensions (mm/in)													Weight (kg/lbs) ca. per 100 <sup>2</sup>	Ordering Codes <sup>3</sup>
	D1	D2	D3		I1	L1	L2	L3	L4	L5 <sup>1</sup>	L6 <sup>1</sup>	L7 <sup>1</sup>	S1	S2	S3				
L	6	8	6	500	21	14	14	14	29	29	29	14	17	14	12	3,81	FI-T-06/08/06L-W3		
	.24	.31	.24	7250	.83	.55	.55	.55	1.14	1.14	1.14	.55	.67	.55	.47	8.38			
	6	10	6	500	22	15	15	15	30	30	30	14	19	14	14	4,90	FI-T-06/10/06L-W3		
	.24	.39	.24	7250	.87	.59	.59	.59	1.18	1.18	1.18	.55	.75	.55	.55	10.78			
	8	6	8	500	21	14	14	14	29	29	29	17	14	17	12	3,27	FI-T-08/06/08L-W3		
	.31	.24	.31	7250	.83	.55	.55	.55	1.14	1.14	1.14	.67	.55	.67	.47	7.20			
	8	10	8	500	22	15	15	15	30	30	30	17	19	17	14	4,35	FI-T-08/10/08L-W3		
	.31	.39	.31	7250	.87	.59	.59	.59	1.18	1.18	1.18	.67	.75	.67	.55	9.57			
	8	12	8	400	24	17	17	17	32	32	32	17	22	17	17	5,94	FI-T-08/12/08L-W3		
	.31	.47	.31	5800	.94	.67	.67	.67	1.26	1.26	1.26	.67	.87	.67	.67	13.06			
	10	6	10	500	22	15	15	15	30	30	30	19	14	19	14	4,18	FI-T-10/06/10L-W3		
	.39	.24	.39	7250	.87	.59	.59	.59	1.18	1.18	1.18	.75	.55	.75	.55	9.19			
	10	8	10	500	22	15	15	15	30	30	30	19	17	19	14	4,11	FI-T-10/08/10L-W3		
	.39	.31	.39	7250	.87	.59	.59	.59	1.18	1.18	1.18	.75	.67	.75	.55	9.05			
	10	15	10	400	28	21	21	21	36	36	36	19	27	19	19	10,05	FI-T-10/15/10L-W3		
	.39	.59	.39	5800	1.10	.83	.83	.83	1.42	1.42	1.42	.75	1.06	.75	.75	22.10			
	12	6	12	400	24	17	17	17	32	32	32	22	14	22	17	5,66	FI-T-12/06/12L-W3		
	.47	.24	.47	5800	.94	.67	.67	.67	1.26	1.26	1.26	.87	.55	.87	.67	12.44			
	12	8	12	400	24	17	17	17	32	32	32	22	17	22	17	5,68	FI-T-12/08/12L-W3		
	.47	.31	.47	5800	.94	.67	.67	.67	1.26	1.26	1.26	.87	.67	.87	.67	12.50			
	12	10	12	400	24	17	17	17	32	32	32	22	19	22	17	5,58	FI-T-12/10/12L-W3		
	.47	.39	.47	5800	.94	.67	.67	.67	1.26	1.26	1.26	.87	.75	.87	.67	12.28			
	12	15	12	400	28	21	21	21	36	36	36	22	27	22	19	9,73	FI-T-12/15/12L-W3		
	.47	.59	.47	5800	1.10	.83	.83	.83	1.42	1.42	1.42	.87	1.06	.87	.75	21.41			
	12	18	12	400	31	24	23,5	24	39	40	39	22	32	22	24	14,87	FI-T-12/18/12L-W3		
	.47	.71	.47	5800	1.22	.94	.93	.94	1.54	1.57	1.54	.87	1.26	.87	.94	32.72			
	15	6	15	400	28	21	21	21	36	36	36	27	14	27	19	10,06	FI-T-15/06/15L-W3		
	.59	.24	.59	5800	1.10	.83	.83	.83	1.42	1.42	1.42	1.06	.55	1.06	.75	22.14			
	15	10	15	400	28	21	21	21	36	36	36	27	19	27	19	9,82	FI-T-15/10/15L-W3		
	.59	.39	.59	5800	1.10	.83	.83	.83	1.42	1.42	1.42	1.06	.75	1.06	.75	21.61			
	15	12	15	400	28	21	21	21	36	36	36	27	22	27	19	9,70	FI-T-15/12/15L-W3		
	.59	.47	.59	5800	1.10	.83	.83	.83	1.42	1.42	1.42	1.06	.87	1.06	.75	21.35			
	15	18	15	400	31	24	23,5	24	39	40	39	27	32	27	24	15,22	FI-T-15/18/15L-W3		
	.59	.71	.59	5800	1.22	.94	.93	.94	1.54	1.57	1.54	1.06	1.26	1.06	.94	33.48			
	18	10	18	400	31	23,5	24	23,5	40	39	40	32	19	32	24	14,52	FI-T-18/10/18L-W3		
	.71	.39	.71	5800	1.22	.93	.94	.93	1.57	1.54	1.57	1.26	.75	1.26	.94	31.95			
	18	12	18	400	31	23,5	24	23,5	40	39	40	32	22	32	24	14,76	FI-T-18/12/18L-W3		
	.71	.47	.71	5800	1.22	.93	.94	.93	1.57	1.54	1.57	1.26	.87	1.26	.94	32.48			
	18	15	18	400	31	23,5	24	23,5	40	39	40	32	27	32	24	14,62	FI-T-18/15/18L-W3		
	.71	.59	.71	5800	1.22	.93	.94	.93	1.57	1.54	1.57	1.26	1.06	1.26	.94	32.16			

<sup>1</sup> Approximate dimension in assembled condition.

<sup>2</sup> Weight excluding cutting rings and union nuts.

<sup>3</sup> Standard scope of delivery: Fitting body only.

**Ordering Codes**

**\*FI-T\*/-10/\*08/\*10\*L\*-W3\*-MS**

- \* Tee Reducer FI-T
- \* Outside Tube Diameter D1 (in mm) -10
- \* Outside Tube Diameter D2 (in mm) 08
- \* Outside Tube Diameter D3 (in mm) 10
- \* Series L  
Light Series (page 87)  
Heavy Series (page 88) S
- \* Material Code -W3  
Steel, zinc/nickel-plated
- Please contact STAUFF for alternative materials and surface finishings.
- \* Assembling / Kitting —  
Fitting body only
- Fitting body supplied with cutting rings and union nuts -MS
- Fitting body supplied with soft-sealing cutting rings and union nuts -MSV

**Connecting Parts**

-  Cutting Ring  
Type **FI-DS**
-  Soft-Sealing Cutting Ring  
Type **FI-WDDS**
-  Support Sleeve  
Type **FI-VH**
-  STAUFF Form Ring  
Type **FI-AR**
-  Union Nut  
Type **FI-M**
-  37° Flared Tube Fitting Set  
Type **FI-AB**