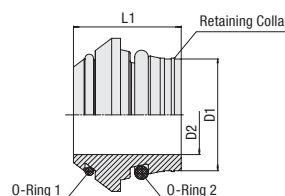
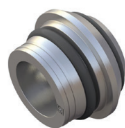


24°/37° Flared Cone Adaptor with O-Rings
Type FI-BA ▪ Series L / S



Ordering Codes

***FI-BA*-10*L*-B*-W3**

* 24°/37° Flared Cone Adaptor with O-Rings

FI-BA

* Outside Tube Diameter D1 (in mm)

-10

* Series
 Light Series
 Heavy Series

L

S

* Seal Material
 NBR (Buna-N®)
 FKM (Viton®)
 EPDM

-B

-V

-E

* Material Code
 Steel, zinc/nickel-plated

-W3

Please contact STAUFF for alternative materials and surface finishings.

Spare Parts / Accessories



O-Ring
 Type **O-RING**

| Series | Tube OD PN | | Dimensions | | | | Weight (^{kg} / _{lbs}) ca. per 100 | Ordering Codes |
|--------|---|---|---|------------|------------|------------|---|------------------|
| | (^{mm} / _{in}) D1 | (^{bar} / _{PSI}) PN | (^{mm} / _{in}) D2 | L1 | O-Ring 1 | O-Ring 2 | | |
| L | 6 | 500 | 3 | 11,5 | 4,4 x 0,8 | 4,5 x 1,5 | 0,28 | FI-BA-06L/S-B-W3 |
| | .24 | 7250 | .12 | .45 | .17 x .03 | .18 x .06 | .62 | |
| | 8 | 500 | 5 | 12 | 6,0 x 0,8 | 6,5 x 1,5 | 0,40 | FI-BA-08L/S-B-W3 |
| | .31 | 7250 | .20 | .47 | .24 x .03 | .26 x .06 | .89 | |
| | 10 | 500 | 6 | 12,5 | 7,5 x 0,8 | 8,5 x 1,5 | 0,65 | FI-BA-10L/S-B-W3 |
| | .39 | 7250 | .24 | .49 | .30 x .03 | .33 x .06 | 1.43 | |
| | 12 | 400 | 8 | 12,5 | 9,5 x 0,8 | 10,0 x 1,5 | 0,80 | FI-BA-12L/S-B-W3 |
| | .47 | 5800 | .31 | .49 | .37 x .03 | .39 x .06 | 1.76 | |
| | 15 | 400 | 11 | 12,5 | 12,5 x 0,8 | 12,5 x 2,0 | 1,05 | FI-BA-15L-B-W3 |
| | .59 | 5800 | .43 | .49 | .49 x .03 | .49 x .08 | 2.31 | |
| | 18 | 400 | 14 | 13 | 15,0 x 1,0 | 16,0 x 2,0 | 1,26 | FI-BA-18L-B-W3 |
| | .71 | 5800 | .55 | .51 | .59 x .04 | .63 x .08 | 2.77 | |
| | 22 | 250 | 17 | 14,2 | 18,0 x 1,0 | 20,0 x 2,0 | 2,01 | FI-BA-22L-B-W3 |
| | .87 | 3625 | .67 | .56 | .71 x .04 | .79 x .08 | 4.43 | |
| | 28 | 250 | 23 | 14,7 | 23,0 x 1,0 | 26,0 x 2,0 | 2,82 | FI-BA-28L-B-W3 |
| | 1.10 | 3625 | .91 | .58 | .91 x .04 | 1.02 x .08 | 6.20 | |
| | 35 | 250 | 28 | 18,5 | 30,0 x 1,0 | 32,0 x 2,5 | 5,86 | FI-BA-35L-B-W3 |
| | 1.38 | 3625 | 1.10 | .73 | 1.18 x .04 | 1.26 x .10 | 12.88 | |
| 42 | 250 | 35 | 20,5 | 37,0 x 1,0 | 38,0 x 2,5 | 4,40 | FI-BA-42L-B-W3 | |
| 1.65 | 3625 | 1.38 | .81 | 1.46 x .04 | 1.50 x .10 | 9.69 | | |
| S | 6 | 630 | 3 | 11,5 | 4,4 x 0,8 | 4,5 x 1,5 | 0,28 | FI-BA-06L/S-B-W3 |
| | .24 | 9135 | .12 | .45 | .17 x .03 | .18 x .06 | .62 | |
| | 8 | 630 | 5 | 12 | 6,0 x 0,8 | 6,5 x 1,5 | 0,40 | FI-BA-08L/S-B-W3 |
| | .31 | 9135 | .20 | .47 | .24 x .03 | .26 x .06 | .89 | |
| | 10 | 630 | 6 | 12,5 | 7,5 x 0,8 | 8,5 x 1,5 | 0,65 | FI-BA-10L/S-B-W3 |
| | .39 | 9135 | .24 | .49 | .30 x .03 | .33 x .06 | 1.43 | |
| | 12 | 630 | 8 | 12,5 | 9,5 x 0,8 | 10,0 x 1,5 | 0,80 | FI-BA-12L/S-B-W3 |
| | .47 | 9135 | .31 | .49 | .37 x .03 | .39 x .06 | 1.76 | |
| | 14 | 630 | 9 | 14 | 11,0 x 1,0 | 12,0 x 2,0 | 1,20 | FI-BA-14S-B-W3 |
| | .55 | 9135 | .35 | .55 | .43 x .04 | .47 x .08 | 2.63 | |
| | 16 | 630 | 11 | 15 | 12,5 x 1,0 | 14,0 x 2,0 | 1,50 | FI-BA-16S-B-W3 |
| | .63 | 9135 | .43 | .59 | .49 x .04 | .55 x .08 | 3.30 | |
| | 20 | 400 | 14 | 18,5 | 16,0 x 1,0 | 17,3 x 2,4 | 2,73 | FI-BA-20S-B-W3 |
| | .79 | 5800 | .55 | .73 | .63 x .04 | .68 x .09 | 6.00 | |
| | 25 | 400 | 19 | 20 | 20,0 x 1,0 | 22,3 x 2,4 | 3,78 | FI-BA-25S-B-W3 |
| | .98 | 5800 | .75 | .79 | .79 x .04 | .88 x .09 | 8.32 | |
| | 30 | 400 | 23 | 22 | 25,0 x 1,0 | 27,3 x 2,4 | 3,82 | FI-BA-30S-B-W3 |
| | 1.18 | 5800 | .91 | .87 | .98 x .04 | 1.07 x .09 | 8.41 | |
| 38 | 400 | 30 | 26 | 32,0 x 1,8 | 35,0 x 2,4 | 9,15 | FI-BA-38S-B-W3 | |
| 1.50 | 5800 | 1.18 | 1.02 | 1.26 x .07 | 1.38 x .09 | 20.13 | | |

Standard seal material is NBR (Buna-N®).