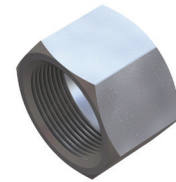
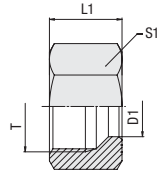


Union Nut
Type FI-M • Series LL / L / S


Series	Tube OD		Dimensions (mm/in)	L1	S1	Weight (kg/lbs) ca. per 100 ²	Ordering Codes	
	(mm/in)	PN (bar/PSI)						Thread T
LL	4	100	M 8 x 1	11	10	0,40	FI-M-04LL-W3	
	.16	1450		.43	.39	.88		
	6	100	M 10 x 1	11,5	12	0,50	FI-M-06LL-W3	
	.24	1450		.45	.47	1.10		
	8	100	M 12 x 1	12	14	0,70	FI-M-08LL-W3	
	.31	1450		.47	.55	1.54		
	10	100	M 14 x 1	12,5	17	1,10	FI-M-10LL-W3	
	.39	1450		.49	.67	2.42		
	12	100	M 16 x 1	13	19	1,30	FI-M-12LL-W3	
	.47	1450		.51	.75	2.86		
	L	6	500	M 12 x 1,5	14,5	14	0,90	FI-M-06L-W3
		.24	7250		.57	.55	1.98	
8		500	M 14 x 1,5	14,5	17	1,40	FI-M-08L-W3	
.31		7250		.57	.67	3.08		
10		500	M 16 x 1,5	15,5	19	1,70	FI-M-10L-W3	
.39		7250		.61	.75	3.74		
12		400	M 18 x 1,5	15,5	22	2,40	FI-M-12L-W3	
.47		5800		.61	.87	5.28		
15		400	M 22 x 1,5	17	27	4,10	FI-M-15L-W3	
.59		5800		.67	1.06	9.02		
18		400	M 26 x 1,5	18	32	6,00	FI-M-18L-W3	
.71		5800		.71	1.26	13.20		
22		250	M 30 x 2	20	36	8,00	FI-M-22L-W3	
.87		3625		.79	1.42	17.60		
28		250	M 36 x 2	22	41	14,20	FI-M-28L-W3	
1.10		3625		.87	1.61	31.24		
35		250	M 45 x 2	25	50	19,80	FI-M-35L-W3	
1.38		3625		.98	1.97	43.56		
42	250	M 52 x 2	25	60	22,00	FI-M-42L-W3		
1.65	3625		.98	2.36	48.40			
S	6	800	M 14 x 1,5	16,5	17	1,70	FI-M-06S-W3	
	.24	11600		.65	.67	3.74		
	8	800	M 16 x 1,5	16,5	19	2,00	FI-M-08S-W3	
	.31	11600		.65	.75	4.40		
	10	800	M 18 x 1,5	17,5	22	3,00	FI-M-10S-W3	
	.39	11600		.69	.87	6.60		
	12	630	M 20 x 1,5	17,5	24	3,40	FI-M-12S-W3	
	.47	9135		.69	.94	7.48		
	14	630	M 22 x 1,5	20,5	27	5,20	FI-M-14S-W3	
	.55	9135		.81	1.06	11.44		
	16	630	M 24 x 1,5	20,5	30	6,50	FI-M-16S-W3	
	.63	9135		.81	1.18	14.30		
	20	400	M 30 x 2	24	36	10,10	FI-M-20S-W3	
	.79	5800		.94	1.42	22.22		
	25	400	M 36 x 2	27	46	19,80	FI-M-25S-W3	
	.98	5800		1.06	1.81	43.56		
	30	400	M 42 x 2	29	50	21,60	FI-M-30S-W3	
	1.18	5800		1.14	1.97	47.52		
38	400	M52 x 2	32,5	60	31,40	FI-M-38S-W3		
1.50	5800		1.28	2.36	69.08			

Ordering Codes
***FI-M*-10*L*-W3**

* Union Nut		FI-M
* Outside Tube Diameter D1 (in mm)		-10
* Series	Light Series	L
	Heavy Series	S
* Material Code	Steel, zinc/nickel-plated	-W3

Please contact STAUFF for alternative materials and surface finishings.