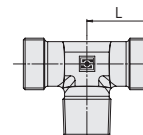
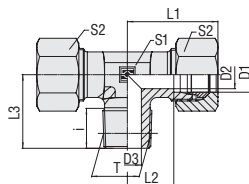


Male Stud Branch Tee
Type FI-TE-...-N ▪ Series LL / L



NPT-Thread

Ordering Codes

***FI-TE*-10*L*1/4N*-W3*-MS**

- * Male Stud Branch Tee **FI-TE**
- * Outside Tube Diameter D1 (in mm) **-10**
- * Series **LL**
 Extra-Light Series (page 72)
 Light Series (page 72)
 Heavy Series (page 73) **L**
S
- * Thread Size **1/4**
 acc. to dimension table
 Please always indicate thread sizes, e.g. 1/4!
- * Thread Type **N**
 NPT Thread
- * Material Code **-W3**
 Steel, zinc/nickel-plated
 Please contact STAUFF for alternative materials and surface finishings.
- * Assembling / Kitting **—**
 Fitting body only
 Fitting body supplied with cutting rings and union nuts **-MS**
 Fitting body supplied with soft-sealing cutting rings and union nuts **-MSV**

Series	Tube OD PN		Dimensions											Weight (^{kg} /lbs) Ca. per 100 ²	Ordering Codes ³
	(mm/in)	(^{mm} / _{in})	Thread	T	D2	D3	i	L	L1 ¹	L2	L3	S1	S2		
LL	4	100	1/8 NPT	3	3	7	15	21	11	17	9	10	1,60	FI-TE-04LL1/8N-W3	
	.16	1450		.12	.12	.28	.59	.83	.43	.67	.35	.39	3.52		
	6	100	1/8 NPT	4,5	4,5	7	15	21	9,5	17	9	12	1,50	FI-TE-06LL1/8N-W3	
	.24	1450		.18	.18	.28	.59	.83	.37	.67	.35	.47	3.30		
	8	100	1/8 NPT	5	5	7	17	23	11,5	20	12	14	2,50	FI-TE-08LL1/8N-W3	
.31	1450		.20	.20	.28	.67	.91	.45	.79	.47	.55	5.50			
L	6	315	1/8 NPT	4	4	7	19	27	12	20	12	14	3,00	FI-TE-06L1/8N-W3	
	.24	4568		.16	.16	.28	.75	1.06	.47	.79	.47	.55	6.60		
	6	315	1/4 NPT	4	4	10	21	29	14	26	12	14	4,40	FI-TE-06L1/4N-W3	
	.24	4568		.16	.16	.39	.83	1.14	.55	1.02	.47	.55	9.68		
	8	315	1/4 NPT	6	6	10	21	29	14	26	12	17	4,20	FI-TE-08L1/4N-W3	
	.31	4568		.24	.24	.39	.83	1.14	.55	1.02	.47	.67	9.24		
	10	315	1/4 NPT	7	7	10	22	30	15	27	14	19	5,00	FI-TE-10L1/4N-W3	
	.39	4568		.28	.28	.39	.87	1.18	.59	1.06	.55	.75	11.00		
	12	315	3/8 NPT	10	10	10,5	24	32	17	28	17	22	6,50	FI-TE-12L3/8N-W3	
	.47	4568		.39	.39	.41	.94	1.26	.67	1.10	.67	.87	14.30		
	15	315	1/2 NPT	12	12	14	28	36	21	36	19	27	12,10	FI-TE-15L1/2N-W3	
	.59	4568		.47	.47	.55	1.10	1.42	.83	1.42	.75	1.06	26.62		
	18	315	1/2 NPT	15	12	14	31	40	23,5	36	24	32	16,30	FI-TE-18L1/2N-W3	
	.71	4568		.59	.47	.55	1.22	1.57	.93	1.42	.94	1.26	35.86		
	22	160	3/4 NPT	19	18	14	35	44	27,5	42	27	36	21,80	FI-TE-22L3/4N-W3	
	.87	2320		.75	.71	.55	1.38	1.73	1.08	1.65	1.06	1.42	47.96		
	28	160	1 NPT	24	21	17,5	38	47	30,5	48	36	41	39,00	FI-TE-28L1N-W3	
	1.10	2320		.94	.83	.69	1.50	1.85	1.20	1.89	1.42	1.61	85.80		
	35	160	1 1/4 NPT	30	28	18	46	57	35,5	54	41	50	59,40	FI-TE-35L1-1/4N-W3	
	1.38	2320		1.18	1.10	.71	1.81	2.24	1.40	2.13	1.61	1.97	130.68		
42	160	1 1/2 NPT	36	34	18,5	51	63	40	61	50	60	84,10	FI-TE-42L1-1/2N-W3		
1.65	2320		1.42	1.34	.73	2.01	2.48	1.57	2.40	1.97	2.36	185.02			

Connecting Parts

- Cutting Ring
Type **FI-DS**
- Soft-Sealing Cutting Ring
Type **FI-WDDS**
- Support Sleeve
Type **FI-VH**
- STAUFF Form Ring
Type **FI-AR**
- Union Nut
Type **FI-M**
- 37° Flared Tube Fitting Set
Type **FI-AB**

¹ Approximate dimension in assembled condition.
² Weight excluding cutting rings and union nuts.
³ Standard scope of delivery: Fitting body only.

Male stud acc. to ANSI/ASME B1.20.1-1983
 Port acc. to ANSI/ASME B1.20.1-1983
 Suitable liquid / plastic sealant required.

Male threaded studs were designed for female threaded ports in components made of steel. For applications with components made of softer mating materials (e.g. Aluminium), the use of connectors with additionally rolled male threads is recommended.
 Please contact STAUFF prior to the assembly for further information.