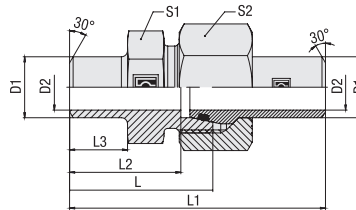


Straight Weld Fitting for Tubes
Type FI-ASV • Series S



Ordering Codes

***FI-ASV*-06*S*x1.5*-B*-W159*-MSN**

- * Straight Weld Fitting for Tubes **FI-ASV**
- * Outside Tube Diameter (in mm) **-06**
- * Series Heavy Series **S**
- * Wall Thickness (in mm) **x1.5**
- * Seal Material NBR (Buna-N®) **-B**
FKM (Viton®) **-V**
EPDM **-E**
- * Material Code Steel, phosphated **-W2**
Fitting body / weld cone: Steel, phosphated **-W159**
Union nut: Steel, zinc/nickel-plated

Please contact STAUFF for alternative materials and surface finishings.

- * Assembling / Kitting Straight weld fitting for tubes supplied with 24° weld cone with O-ring and union nut **-MSN**

Connecting Parts



Union Nut
Type **FI-M**

Spare Parts / Accessories



O-Ring
Type **O-RING**

Series	Tube OD		PN (bar/psi)	Dimensions							Weight (kg/lbs) ca. per 100 ²	Ordering Codes ³
	D1	for Tube		D2	L	L1 ¹	L2	L3	S1	S2		
S	10	10 x 1	249	8	32	58	24,5	10	19	22	8,11	FI-ASV-10Sx1-B-W159-MSN
	.39	.39 x .04	3610	.31	1.26	2.28	.96	.39	.75	.87	17.84	
10	10 x 1,5	358	7	32	58	24,5	10	19	22	8,54	FI-ASV-10Sx1.5-B-W159-MSN	
.39	.39 x .06	5191	.28	1.26	2.28	.96	.39	.75	.87	18.79		
10	10 x 2	460	6	32	58	24,5	10	19	22	8,99	FI-ASV-10Sx2-B-W159-MSN	
.39	.39 x .08	6670	.24	1.26	2.28	.96	.39	.75	.87	19.78		
12	12 x 1,5	305	9	37	63	29,5	15	22	24	10,47	FI-ASV-12Sx1.5-B-W159-MSN	
.47	.47 x .06	4423	.35	1.46	2.48	1.16	.59	.87	.94	23.03		
12	12 x 2	393	8	37	63	29,5	15	22	24	11,00	FI-ASV-12Sx2-B-W159-MSN	
.47	.47 x .08	5699	.31	1.46	2.48	1.16	.59	.87	.94	24.20		
12	12 x 2,5	476	7	37	63	29,5	15	22	24	11,54	FI-ASV-12Sx2.5-B-W159-MSN	
.47	.47 x .10	6902	.28	1.46	2.48	1.16	.59	.87	.94	25.39		
16	16 x 1,5	234	13	41,5	74	33	16,5	27	30	17,40	FI-ASV-16Sx1.5-B-W159-MSN	
.63	.63 x .06	3393	.51	1.63	2.91	1.30	.65	1.06	1.18	38.28		
16	16 x 2	305	12	41,5	74	33	16,5	27	30	18,30	FI-ASV-16Sx2-B-W159-MSN	
.63	.63 x .08	4423	.47	1.63	2.91	1.30	.65	1.06	1.18	40.26		
16	16 x 2,5	372	11	41,5	74	33	16,5	27	30	19,27	FI-ASV-16Sx2.5-B-W159-MSN	
.63	.63 x .10	5394	.43	1.63	2.91	1.30	.65	1.06	1.18	42.39		
16	16 x 3	400	10	41,5	74	33	16,5	27	30	20,09	FI-ASV-16Sx3-B-W159-MSN	
.63	.63 x .12	5800	.39	1.63	2.91	1.30	.65	1.06	1.18	44.20		
20	20 x 2	249	16	47	84	36,5	19	32	36	28,18	FI-ASV-20Sx2-B-W159-MSN	
.79	.79 x .08	3611	.63	1.85	3.31	1.44	.75	1.26	1.42	62.00		
20	20 x 2,5	305	15	47	84	36,5	19	32	36	29,67	FI-ASV-20Sx2.5-B-W159-MSN	
.79	.79 x .10	4423	.59	1.85	3.31	1.44	.75	1.26	1.42	65.27		
20	20 x 3	358	14	47	84	36,5	19	32	36	31,08	FI-ASV-20Sx3-B-W159-MSN	
.79	.79 x .12	5191	.55	1.85	3.31	1.44	.75	1.26	1.42	68.38		
20	20 x 4	400	12	47	84	36,5	19	32	36	33,10	FI-ASV-20Sx4-B-W159-MSN	
.79	.79 x .16	5800	.47	1.85	3.31	1.44	.75	1.26	1.42	72.82		
25	25 x 3	294	19	51,5	93	39,5	19,5	41	46	53,44	FI-ASV-25Sx3-B-W159-MSN	
.98	.98 x .12	4263	.75	2.03	3.66	1.56	.77	1.61	1.81	117.57		
25	25 x 4	379	17	51,5	93	39,5	19,5	41	46	57,29	FI-ASV-25Sx4-B-W159-MSN	
.98	.98 x .16	5496	.67	2.03	3.66	1.56	.77	1.61	1.81	126.04		
25	25 x 5	400	15	51,5	93	39,5	19,5	41	46	59,90	FI-ASV-25Sx5-B-W159-MSN	
.98	.98 x .20	5800	.59	2.03	3.66	1.56	.77	1.61	1.81	131.78		
30	30 x 3	249	24	58	102	44,5	23	46	50	66,38	FI-ASV-30Sx3-B-W159-MSN	
1.18	1.18 x .12	3611	.94	2.28	4.02	1.75	.91	1.81	1.97	146.04		
30	30 x 4	323	22	58	102	44,5	23	46	50	71,62	FI-ASV-30Sx4-B-W159-MSN	
1.18	1.18 x .16	4684	.87	2.28	4.02	1.75	.91	1.81	1.97	157.56		
30	30 x 5	393	20	58	102	44,5	23	46	50	75,33	FI-ASV-30Sx5-B-W159-MSN	
1.18	1.18 x .20	5699	.79	2.28	4.02	1.75	.91	1.81	1.97	165.73		
30	30 x 6	400	18	58	102	44,5	23	46	50	79,03	FI-ASV-30Sx6-B-W159-MSN	
1.18	1.18 x .24	5800	.71	2.28	4.02	1.75	.91	1.81	1.97	173.87		
38	38 x 4	261	30	60	109	44	22	55	60	102,93	FI-ASV-38Sx4-B-W159-MSN	
1.50	1.50 x .16	3785	1.18	2.36	4.29	1.73	.87	2.17	2.36	226.45		
38	38 x 5	315	28	60	109	44	22	55	60	108,61	FI-ASV-38Sx5-B-W159-MSN	
1.50	1.50 x .20	4568	1.10	2.36	4.29	1.73	.87	2.17	2.36	238.94		
38	38 x 6	315	26	60	109	44	22	55	60	114,48	FI-ASV-38Sx6-B-W159-MSN	
1.50	1.50 x .24	4568	1.02	2.36	4.29	1.73	.87	2.17	2.36	251.86		
38	38 x 7	315	24	60	109	44	22	55	60	119,83	FI-ASV-38Sx7-B-W159-MSN	
1.50	1.50 x .28	4568	.94	2.36	4.29	1.73	.87	2.17	2.36	263.63		

¹ Approximate dimension in assembled condition.

² Weight including 24° weld cone and union nut.

³ Standard scope of delivery:

24° weld cone, O-ring and union nut.

Standard seal material is NBR (Buna-N®).