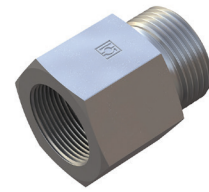
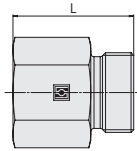
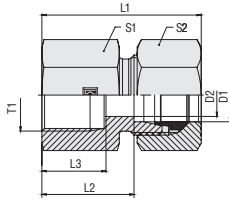


**Straight Female Stud Fitting
Type FI-GA...-M • Series L / S**

Female Metric Parallel Thread

Series	Tube OD (mm/in)	PN (bar/PSI)	Dimensions (mm/in)									Weight (kg/lbs) ca. per 100 ²	Ordering Codes ³
			Thread T	D2	L	L1 ¹	L2	L3	S1	S2			
L	6	315	M10 x 1	4	26,5	34,5	19,5	12,5	14	14	1,89	FI-GA-06LM-W3	
	.24	4568		.16	1.04	1.36	.77	.49	.55	.55	4.15		
	8	315	M12 x 1,5	6	31	39	24	17	17	17	3,40	FI-GA-08LM-W3	
	.31	4568		.24	1.22	1.54	.94	.67	.67	.67	7.48		
	10	315	M14 x 1,5	8	32	40	25	17	19	19	3,73	FI-GA-10LM-W3	
	.39	4568		.31	1.26	1.57	.98	.67	.75	.75	8.20		
	12	315	M16 x 1,5	10	33	41	26	17	22	22	5,29	FI-GA-12LM-W3	
	.47	4568		.39	1.30	1.61	1.02	.67	.87	.87	11.64		
	15	315	M18 x 1,5	12	35	43	28	17	24	27	6,77	FI-GA-15LM-W3	
	.59	4568		.47	1.38	1.69	1.10	.67	.94	1.06	14.89		
	18	315	M22 x 1,5	15	37	46	29,5	19	30	32	11,20	FI-GA-18LM-W3	
	.71	4568		.59	1.46	1.81	1.16	.75	1.18	1.26	24.63		
	22	160	M26 x 1,5	19	42	51	34,5	21	32	36	12,42	FI-GA-22LM-W3	
	.87	2320		.75	1.65	2.01	1.36	.83	1.26	1.42	27.33		
	28	160	M33 x 2	24	45	54	37,5	24	41	41	21,35	FI-GA-28LM-W3	
	1.10	2320		.94	1.77	2.13	1.48	.94	1.61	1.61	46.97		
35	160	M42 x 2	30	51	62	40,5	26	55	50	46,20	FI-GA-35LM-W3		
1.38	2320		1.18	2.01	2.44	1.59	1.02	2.17	1.97	101.64			
42	160	M48 x 2	36	53	65	42	28	60	60	52,10	FI-GA-42LM-W3		
1.65	2320		1.42	2.09	2.56	1.65	1.10	2.36	2.36	114.62			
S	8	630	M14 x 1,5	5	33	41	26	17	19	19	4,36	FI-GA-08SM-W3	
	.31	9135		.20	1.30	1.61	1.02	.67	.75	.75	9.59		
	10	630	M16 x 1,5	7	34	43	26,5	17	22	22	1,31	FI-GA-10SM-W3	
	.39	9135		.28	1.34	1.69	1.04	.67	.87	.87	2.89		
	12	630	M18 x 1,5	8	35	44	27,5	17	24	24	7,01	FI-GA-12SM-W3	
	.47	9135		.31	1.38	1.73	1.08	.67	.94	.94	15.41		
	14	630	M20 x 1,5	10	39	49	31	19	27	27	9,54	FI-GA-14SM-W3	
	.55	9135		.39	1.54	1.93	1.22	.75	1.06	1.06	20.99		
	16	630	M22 x 1,5	12	39	49	30,5	19	30	30	11,71	FI-GA-16SM-W3	
	.63	9135		.47	1.54	1.93	1.20	.75	1.18	1.18	25.76		
	20	400	M27 x 2	16	45	56	34,5	22	36	36	18,68	FI-GA-20SM-W3	
	.79	5800		.63	1.77	2.20	1.36	.87	1.42	1.42	41.09		
	25	400	M33 x 2	20	49	61	37	24	41	46	24,73	FI-GA-25SM-W3	
	.98	5800		.79	1.93	2.40	1.46	.94	1.61	1.81	54.40		
	30	400	M42 x 2	25	55	68	41,5	26	55	50	50,30	FI-GA-30SM-W3	
	1.18	5800		.98	2.17	2.68	1.63	1.02	2.17	1.97	110.66		
38	400	M48 x 2	32	59	74	43	28	60	60	62,80	FI-GA-38SM-W3		
1.50	5800		1.26	2.32	2.91	1.69	1.10	2.36	2.36	138.16			

¹ Approximate dimension in assembled condition.

² Weight excluding cutting ring and union nut.

³ Standard scope of delivery: Fitting body only.

Ordering Codes
***FI-GA*-10*L*M*-W3*-MS**

* Straight Female Stud Fitting	FI-GA
* Outside Tube Diameter D1 (in mm)	-10
* Series	Light Series L Heavy Series S
* Thread Type	Female Metric Parallel Thread M
If required, please indicate special sizes, e.g. M12x1.5!	
* Material Code	Steel, zinc/nickel-plated -W3
Please contact STAUFF for alternative materials and surface finishings.	
* Assembling / Kitting	Fitting body only —
	Fitting body supplied with cutting ring and union nut -MS
	Fitting body supplied with soft-sealing cutting ring and union nut -MSV

Connecting Parts
