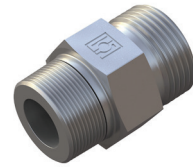
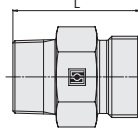
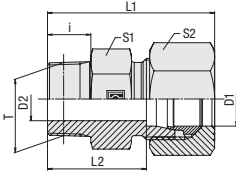


**Straight Male Stud Fitting
Type FI-GE-...-N • Series S**

NPT Thread

Series	Tube OD (mm/in)	PN (bar/psi)	Dimensions (mm/in)									Weight (kg/lbs) ca. per 100 ²	Ordering Codes ³
			Thread	T	D2	i	L	L1 ¹	L2	S1	S2		
S	6	630	1/8 NPT	4	10	28	36	21	14	17	2,30	FI-GE-06S1/8N-W3	
	.24	9135		.16	.39	1.10	1.42	.83	.55	.67	5.06		
6	630		1/4 NPT	4	15	35	43	28	17	17	3,71	FI-GE-06S1/4N-W3	
	.24	9135		.16	.59	1.38	1.69	1.10	.67	.67	8.17		
6	630		3/8 NPT	4	15,5	33	41	26	19	17	4,50	FI-GE-06S3/8N-W3	
	.24	9135		.16	.61	1.30	1.61	1.02	.75	.67	9.91		
8	630		1/8 NPT	4	10	29,5	37,5	22,5	17	19	3,20	FI-GE-08S1/8N-W3	
	.31	9135		.16	.39	1.16	1.48	.89	.67	.75	7.04		
8	630		1/4 NPT	5	15	35	43	28	17	19	3,81	FI-GE-08S1/4N-W3	
	.31	9135		.20	.59	1.38	1.69	1.10	.67	.75	8.37		
8	630		3/8 NPT	5	15,5	36	44	29	19	19	5,31	FI-GE-08S3/8N-W3	
	.31	9135		.20	.61	1.42	1.73	1.14	.75	.75	11.68		
8	630		1/2 NPT	5	20	40	48	33	22	19	8,17	FI-GE-08S1/2N-W3	
	.31	9135		.20	.79	1.57	1.89	1.30	.87	.75	17.97		
10	630		1/4 NPT	5	15	35	44	27,5	19	22	4,36	FI-GE-10S1/4N-W3	
	.39	9135		.20	.59	1.38	1.73	1.08	.75	.87	9.59		
10	630		3/8 NPT	7	15	35	44	27,5	19	22	4,95	FI-GE-10S3/8N-W3	
	.39	9135		.28	.59	1.38	1.73	1.08	.75	.87	10.89		
10	630		1/2 NPT	7	20	38	47	30,5	22	22	7,32	FI-GE-10S1/2N-W3	
	.39	9135		.28	.79	1.50	1.85	1.20	.87	.87	16.11		
12	630		1/4 NPT	5	15,5	37	46	29,5	22	24	4,84	FI-GE-12S1/4N-W3	
	.47	9135		.20	.61	1.46	1.81	1.16	.87	.94	10.66		
12	630		3/8 NPT	8	15	37	46	29,5	22	24	6,21	FI-GE-12S3/8N-W3	
	.47	9135		.31	.59	1.46	1.81	1.16	.87	.94	13.67		
12	630		1/2 NPT	8	20	42	51	34,5	22	24	8,52	FI-GE-12S1/2N-W3	
	.47	9135		.31	.79	1.65	2.01	1.36	.87	.94	18.74		
12	630		3/4 NPT	8	20	44	53	36,5	30	24	12,38	FI-GE-12S3/4N-W3	
	.47	9135		.31	.79	1.73	2.09	1.44	1.18	.94	27.23		
14	630		3/8 NPT	8	15,5	39	49	31	24	27	7,32	FI-GE-14S3/8N-W3	
	.55	9135		.31	.61	1.54	1.93	1.22	.94	1.06	16.11		
14	630		1/2 NPT	10	20	44	54	36	24	27	6,76	FI-GE-14S1/2N-W3	
	.55	9135		.39	.79	1.73	2.13	1.42	.94	1.06	14.88		
16	400		3/8 NPT	8	15	39	49	30,5	27	30	8,66	FI-GE-16S3/8N-W3	
	.63	5800		.31	.59	1.54	1.93	1.20	1.06	1.18	19.06		
16	400		1/2 NPT	12	20	44	54	35,5	27	30	4,42	FI-GE-16S1/2N-W3	
	.63	5800		.47	.79	1.73	2.13	1.40	1.06	1.18	9.72		
16	400		3/4 NPT	12	20	45	55	36,5	30	30	13,97	FI-GE-16S3/4N-W3	
	.63	5800		.47	.79	1.77	2.17	1.44	1.18	1.18	30.73		
20	400		1/2 NPT	12	20	48	59	37,5	32	36	12,18	FI-GE-20S1/2N-W3	
	.79	5800		.47	.79	1.89	2.32	1.48	1.26	1.42	26.80		
20	400		3/4 NPT	16	22	48	59	37,5	32	36	15,05	FI-GE-20S3/4N-W3	
	.79	5800		.63	.87	1.89	2.32	1.48	1.26	1.42	33.12		
20	400		1 NPT	16	25	55	66	44,5	36	36	25,37	FI-GE-20S1N-W3	
	.79	5800		.63	.98	2.17	2.60	1.75	1.42	1.42	55.81		
25	400		1/2 NPT	20	25	57	59	45	41	46	30,60	FI-GE-25S1/2N-W3	
	.98	5800		.79	.98	2.24	2.32	1.77	1.61	1.81	67.32		
25	400		3/4 NPT	16	20	52	64	40	41	46	23,86	FI-GE-25S3/4N-W3	
	.98	5800		.63	.79	2.05	2.52	1.57	1.61	1.81	52.48		
25	400		1 NPT	20	25	57	69	45	41	46	28,19	FI-GE-25S1N-W3	
	.98	5800		.79	.98	2.24	2.72	1.77	1.61	1.81	62.01		
25	400		1 1/4 NPT	20	26	58	70	46	46	46	47,00	FI-GE-25S1-1/4N-W3	
	.98	5800		.79	1.02	2.28	2.76	1.81	1.81	1.81	103.40		
30	400		1 NPT	20	25	59	72	45,5	46	50	34,70	FI-GE-30S1N-W3	
	1.18	5800		.79	.98	2.32	2.83	1.79	1.81	1.97	76.34		
30	400		1 1/4 NPT	25	26	60	73	46,5	46	50	36,50	FI-GE-30S1-1/4N-W3	
	1.18	5800		.98	1.02	2.36	2.87	1.83	1.81	1.97	80.30		
30	400		1 1/2 NPT	25	26	60	73	46,5	50	50	36,50	FI-GE-30S1-1/2N-W3	
	1.18	5800		.98	1.02	2.36	2.87	1.83	1.97	1.97	80.30		
38	315		1 1/4 NPT	25	26	65	80	49	55	60	50,70	FI-GE-38S1-1/4N-W3	
	1.50	4568		.98	1.02	2.56	3.15	1.93	2.17	2.36	111.54		
38	315		1 1/2 NPT	32	26	65	80	49	55	60	50,70	FI-GE-38S1-1/2N-W3	
	1.50	4568		1.26	1.02	2.56	3.15	1.93	2.17	2.36	111.54		

Ordering Codes
***FI-GE*-10*L*1/4*N*-W3*-MS**

* Straight Male Stud Fitting	FI-GE
* Outside Tube Diameter D1 (in mm)	-10
* Series	Extra-Light Series (page 57) LL Light Series (pages 57/58) L Heavy Series (page 59) S
* Thread Size	acc. to dimension table 1/4
Please always indicate thread sizes, e.g. 1/4!	
* Thread Type	NPT Thread N
* Material Code	Steel, zinc/nickel-plated -W3
Please contact STAUFF for alternative materials and surface finishings.	
* Assembling / Kitting	Fitting body only —
	Fitting body supplied with cutting ring and union nut -MS
	Fitting body supplied with soft-sealing cutting ring and union nut -MSV

Connecting Parts


¹ Approximate dimension in assembled condition.
² Weight excluding cutting ring and union nut.
³ Standard scope of delivery: Fitting body only.

Male stud acc. to ANSI/ASME B1.20.1-1983
 Port acc. to ANSI/ASME B1.20.1-1983
 Suitable liquid / plastic sealant required.

Male threaded studs were designed for female threaded ports in components made of steel. For applications with components made of softer mating materials (e.g. Aluminium), the use of connectors with additionally rolled male threads is recommended.
 Please contact STAUFF prior to the assembly for further information.