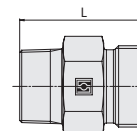
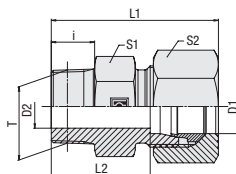
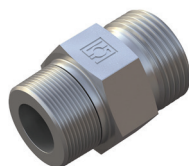


Straight Male Stud Fitting
Type FI-GE-...-N ▪ Series L



NPT Thread

Ordering Codes

***FI-GE*-10*L*1/4*N*-W3*-MS**

- * Straight Male Stud Fitting **FI-GE**
- * Outside Tube Diameter D1 (in mm) **-10**
- * Series **LL**
 Extra-Light Series (page 57)
 Light Series (pages 57/58) **L**
 Heavy Series (page 59) **S**
- * Thread Size **1/4**
 acc. to dimension table
 Please always indicate thread sizes, e.g. 1/4!
- * Thread Type **N**
 NPT Thread
- * Material Code **-W3**
 Steel, zinc/nickel-plated
 Please contact STAUFF for alternative materials and surface finishings.
- * Assembling / Kitting **—**
 Fitting body only
 Fitting body supplied with cutting ring and union nut **-MS**
 Fitting body supplied with soft-sealing cutting ring and union nut **-MSV**

Series	Tube OD (mm/in)	PN (bar/psi)	Dimensions (mm/in)									Weight (kg/lbs) ca. per 100 ²	Ordering Codes ³
			Thread	T	D2	i	L	L1 ¹	L2	S1	S2		
L	18	315	3/8 NPT	8	15,5	34	43	26,5	27	32	6,78	FI-GE-18L3/8N-W3	
	.71	4568		.31	.61	1.34	1.69	1.04	1.06	1.26	14.92		
	18	315	1/2 NPT	12	20	39	48	31,5	27	32	8,10	FI-GE-18L1/2N-W3	
	.71	4568		.47	.79	1.54	1.89	1.24	1.06	1.26	17.82		
	18	315	3/4 NPT	15	20	39	48	31,5	27	32	10,51	FI-GE-18L3/4N-W3	
	.71	4568		.59	.79	1.54	1.89	1.24	1.06	1.26	23.12		
	18	315	1 NPT	15	25	45	54	37,5	36	32	16,85	FI-GE-18L1N-W3	
	.71	4568		.59	.98	1.77	2.13	1.48	1.42	1.26	37.08		
	22	160	1/2 NPT	14	20	41	50	33,5	32	36	9,26	FI-GE-22L1/2N-W3	
	.87	2320		.55	.79	1.61	1.97	1.32	1.26	1.42	20.37		
	22	160	3/4 NPT	16	20	41	50	33,5	32	36	11,07	FI-GE-22L3/4N-W3	
	.87	2320		.63	.79	1.61	1.97	1.32	1.26	1.42	24.35		
	22	160	1 NPT	19	25	47	56	39,5	36	36	18,05	FI-GE-22L1N-W3	
	.87	2320		.75	.98	1.85	2.20	1.56	1.42	1.42	39.70		
	28	160	3/4 NPT	18	20	42	51	34,5	41	41	18,00	FI-GE-28L3/4N-W3	
	1.10	2320		.71	.79	1.65	2.01	1.36	1.61	1.61	39.60		
	28	160	1 NPT	21	25	47	56	39,5	41	41	19,89	FI-GE-28L1N-W3	
	1.10	2320		.83	.98	1.85	2.20	1.56	1.61	1.61	43.76		
	28	160	1 1/4 NPT	24	26	49	58	41,5	46	41	27,00	FI-GE-28L1-1/4N-W3	
	1.10	2320		.94	1.02	1.93	2.28	1.63	1.81	1.61	59.40		
	35	160	1 1/4 NPT	28	26	51	62	40,5	46	50	39,59	FI-GE-35L1-1/4N-W3	
	1.38	2320		1.10	1.02	2.01	2.44	1.59	1.81	1.97	87.09		
	42	160	1 1/4 NPT	28	26	53	65	42	55	60	35,36	FI-GE-42L1-1/4N-W3	
	1.65	2320		1.10	1.02	2.09	2.56	1.65	2.17	2.36	77.79		
42	160	1 1/2 NPT	36	26	53	65	42	55	60	35,36	FI-GE-42L1-1/2N-W3		
1.65	2320		1.42	1.02	2.09	2.56	1.65	2.17	2.36	77.79			

Connecting Parts

- Cutting Ring
Type **FI-DS**
- Soft-Sealing Cutting Ring
Type **FI-WDDS**
- Support Sleeve
Type **FI-VH**
- STAUFF Form Ring
Type **FI-AR**
- Union Nut
Type **FI-M**
- 37° Flared Tube Fitting Set
Type **FI-AB**

¹ Approximate dimension in assembled condition.
² Weight excluding cutting ring and union nut.
³ Standard scope of delivery: Fitting body only.

Male stud acc. to ANSI/ASME B1.20.1-1983
 Port acc. to ANSI/ASME B1.20.1-1983

Suitable liquid / plastic sealant required.

Male threaded studs were designed for female threaded ports in components made of steel. For applications with components made of softer mating materials (e.g. Aluminium), the use of connectors with additionally rolled male threads is recommended.

Please contact STAUFF prior to the assembly for further information.