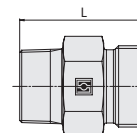
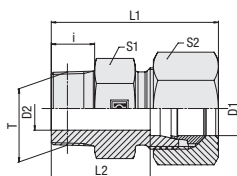
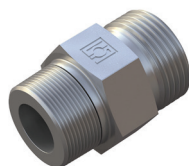


Straight Male Stud Fitting
Type FI-GE-...-Mk ▪ Series LL / L



Ordering Codes

***FI-GE*-10*L*Mk*-W3*-MS**

- * Straight Male Stud Fitting **FI-GE**
- * Outside Tube Diameter D1 (in mm) **-10**
- * Series Extra-Light Series **LL**
 Light Series **L**
- * Thread Type Metric Taper Thread **Mk**
- If required, please indicate special sizes, e.g. M16x1.5k!
- * Material Code Steel, zinc/nickel-plated **-W3**
- Please contact STAUFF for alternative materials and surface finishings.
- * Assembling / Kitting Fitting body only **—**
 Fitting body supplied with cutting ring and union nut **-MS**
 Fitting body supplied with soft-sealing cutting ring and union nut **-MSV**

Connecting Parts

- Cutting Ring
Type **FI-DS**
- Soft-Sealing Cutting Ring
Type **FI-WDDS**
- Support Sleeve
Type **FI-VH**
- STAUFF Form Ring
Type **FI-AR**
- Union Nut
Type **FI-M**
- 37° Flared Tube Fitting Set
Type **FI-AB**

Metric Taper Thread

Series	Tube OD (mm/in)	PN (bar/psi)	Dimensions (mm/in)									Weight (kg/lbs) ca. per 100 ²	Ordering Codes ³
			Thread	T	D2	i	L	L1 ¹	L2	S1	S2		
LL	4	100	M 6 x 1 keg.	2,5	8	20	26	16	9	10	0,50	FI-GE-04LLM6x1k-W3	
	.16	1450		.10	.31	.79	1.02	.63	.35	.39	1.09		
	4	100	M 8 x 1 keg.	3	8	20	26	16	10	10	0,63	FI-GE-04LLMk-W3	
	.16	1450		.12	.31	.79	1.02	.63	.39	.39	1.39		
	4	100	M 10 x 1 keg.	3	8	20	26	16	11	10	0,85	FI-GE-04LLM10x1k-W3	
	.16	1450		.12	.31	.79	1.02	.63	.43	.39	1.87		
	6	100	M 6 x 1 keg.	2	8	20	26	14,5	11	12	0,68	FI-GE-06LLM6x1k-W3	
	.24	1450		.08	.31	.79	1.02	.57	.43	.47	1.50		
	6	100	M 8 x 1 keg.	3	8	20	26	14,5	11	12	0,75	FI-GE-06LLM8x1k-W3	
	.24	1450		.12	.31	.79	1.02	.57	.43	.47	1.66		
	6	100	M 10 x 1 keg.	4	8	20	26	14,5	11	12	0,85	FI-GE-06LLMk-W3	
	.24	1450		.16	.31	.79	1.02	.57	.43	.47	1.88		
8	100	M 8 x 1 keg.	3,5	8	22	28	16,5	12	14	1,29	FI-GE-08LLM8x1k-W3		
.31	1450		.14	.31	.87	1.10	.65	.47	.55	2.83			
8	100	M 10 x 1 keg.	6	8	22	28	16,5	12	14	0,98	FI-GE-08LLMk-W3		
.31	1450		.24	.31	.87	1.10	.65	.47	.55	2.15			
L	6	315	M 10 x 1 keg.	4	8	23	31	16	14	14	2,12	FI-GE-06LMk-W3	
	.24	4568		.16	.31	.91	1.22	.63	.55	.55	4.67		
	6	315	M 12 x 1,5 keg.	4	12	27	35	20	14	14	2,26	FI-GE-06LM12x1.5k-W3	
	.24	4568		.16	.47	1.06	1.38	.79	.55	.55	4.98		
	8	315	M 12 x 1,5 keg.	6	12	27	35	20	14	17	1,74	FI-GE-08LMk-W3	
	.31	4568		.24	.47	1.06	1.38	.79	.55	.67	3.83		
	8	315	M 14 x 1,5 keg.	6	12	27	35	20	17	17	3,11	FI-GE-08LM14x1.5k-W3	
	.31	4568		.24	.47	1.06	1.38	.79	.67	.67	6.83		
	10	315	M 14 x 1,5 keg.	7	12	28	36	21	17	19	2,51	FI-GE-10LMk-W3	
	.39	4568		.28	.47	1.10	1.42	.83	.67	.75	5.53		
	10	315	M 16 x 1,5 keg.	8	12	28	36	21	17	19	4,05	FI-GE-10LM16x1.5k-W3	
	.39	4568		.31	.47	1.10	1.42	.83	.67	.75	8.91		
	12	315	M 16 x 1,5 keg.	9	12	29	37	22	19	22	3,18	FI-GE-12LMk-W3	
	.47	4568		.35	.47	1.14	1.46	.87	.75	.87	6.99		
	12	315	M 18 x 1,5 keg.	10	12	29	37	22	19	22	4,90	FI-GE-12LM18x1.5k-W3	
	.47	4568		.39	.47	1.14	1.46	.87	.75	.87	10.78		
	15	315	M 18 x 1,5 keg.	11	12	30	41	23	24	27	4,73	FI-GE-15LMk-W3	
	.59	4568		.43	.47	1.18	1.61	.91	.94	1.06	10.41		
18	315	M 22 x 1,5 keg.	14	14	33	42	25,5	27	32	7,02	FI-GE-18LMk-W3		
.71	4568		.55	.55	1.30	1.65	1.00	1.06	1.26	15.44			

¹ Approximate dimension in assembled condition.

² Weight excluding cutting ring and union nut.

³ Standard scope of delivery: Fitting body only.

Male stud acc. to DIN 3852-1 (Form C)

Port acc. to DIN 3852-1 (Form Z)

Suitable liquid / plastic sealant required.

Male threaded studs were designed for female threaded ports in components made of steel. For applications with components made of softer mating materials (e.g. Aluminium), the use of connectors with additionally rolled male threads is recommended.

Please contact STAUFF prior to the assembly for further information.