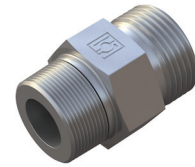
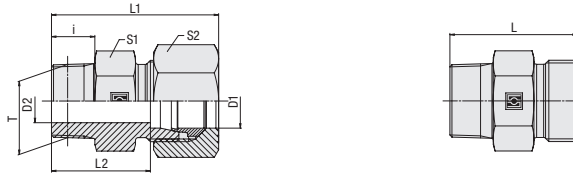


**Straight Male Stud Fitting
Type FI-GE-...-Rk ▪ Series S**



Whitworth Taper Pipe Thread (BSPT)

Series	Tube OD (mm/in)	PB (bar/PSI)	Dimensions (mm/in)								Weight (kg/lbs) ca. per 100 ²	Ordering Codes ³
			Thread	T	D2	i	L	L1 ¹	L2	S1		
S	6	630	R 1/4 keg.	4	12	30	38	23	17	17	3,01	FI-GE-06SRk-W3
	.24	9135		.16	.47	1.18	1.50	.91	.67	.67	6.62	
	8	630	R 1/4 keg.	5	12	29	37	22	17	19	3,50	FI-GE-08SRk-W3
	.31	9135		.20	.47	1.14	1.46	.87	.67	.75	7.69	
	10	630	R 3/8 keg.	7	12	32	41	24,5	19	22	4,49	FI-GE-10SRk-W3
	.39	9135		.28	.47	1.26	1.61	.96	.75	.87	9.88	
	12	630	R 3/8 keg.	8	12	34	43	26,5	22	24	6,03	FI-GE-12SRk-W3
	.47	9135		.31	.47	1.34	1.69	1.04	.87	.94	13.27	
	14	630	R 1/2 keg.	10	14	35	45	27	24	27	7,04	FI-GE-14SRk-W3
	.55	9135		.39	.55	1.38	1.77	1.06	.94	1.06	15.48	
	16	400	R 1/2 keg.	12	14	38	48	29,5	27	30	8,52	FI-GE-16SRk-W3
	.63	5800		.47	.55	1.50	1.89	1.16	1.06	1.18	18.75	
	20	400	R 3/4 keg.	16	17	45,5	57	35	32	36	14,43	FI-GE-20SRk-W3
	.79	5800		.63	.67	1.79	2.24	1.38	1.26	1.42	31.75	

¹ Approximate dimension in assembled condition.

² Weight excluding cutting ring and union nut.

³ Standard scope of delivery: Fitting body only.

Male stud acc. to DIN 3852-2 (Form C)

Port acc. to DIN 3852-2 (Form Z)

Suitable liquid / plastic sealant required.

Male threaded studs were designed for female threaded ports in components made of steel. For applications with components made of softer mating materials (e.g. Aluminium), the use of connectors with additionally rolled male threads is recommended.






Please contact STAUFF prior to the assembly for further information.

Ordering Codes

***FI-GE*-10*L*Rk*-W3*-MS**

* Straight Male Stud Fitting	FI-GE
* Outside Tube Diameter D1 (in mm)	-10
* Series	Extra-Light Series (page 54) LL Light Series (page 54) L Heavy Series (page 55) S
* Thread Type	Whitworth Taper Pipe Thread (BSPT) Rk
If required, please indicate special sizes, e.g. R1/8k!	
* Material Code	Steel, zinc/nickel-plated -W3
Please contact STAUFF for alternative materials and surface finishings.	
* Assembling / Kitting	Fitting body only —
	Fitting body supplied with cutting ring and union nut -MS
	Fitting body supplied with soft-sealing cutting ring and union nut -MSV

Connecting Parts

-  Cutting Ring
Type **FI-DS**
-  Soft-Sealing Cutting Ring
Type **FI-WDDS**
-  Support Sleeve
Type **FI-VH**
-  STAUFF Form Ring
Type **FI-AR**
-  Union Nut
Type **FI-M**
-  37° Flared Tube Fitting Set
Type **FI-AB**