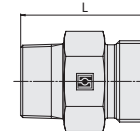
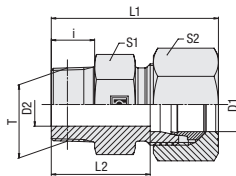
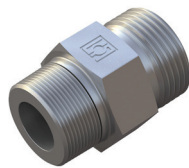


**Straight Male Stud Fitting**  
Type FI-GE-...-Rk • Series LL / L



**Whitworth Taper Pipe Thread (BSPT)**

**Ordering Codes**

**\*FI-GE\*-10\*L\*Rk\*-W3\*-MS**

- \* Straight Male Stud Fitting **FI-GE**
- \* Outside Tube Diameter D1 (in mm) **-10**
- \* Series **LL**  
 Extra-Light Series (page 54)  
 Light Series (page 54)  
 Heavy Series (page 55)  
**L**  
**S**
- \* Thread Type **Rk**  
 Whitworth Taper  
 Pipe Thread (BSPT)
- If required, please indicate special sizes, e.g. R1/8k!
- \* Material Code **-W3**  
 Steel, zinc/nickel-plated
- Please contact STAUFF for alternative materials and surface finishings.
- \* Assembling / Kitting **—**  
 Fitting body only
- Fitting body supplied with cutting ring and union nut **-MS**
- Fitting body supplied with soft-sealing cutting ring and union nut **-MSV**

**Connecting Parts**

- Cutting Ring  
Type **FI-DS**
- Soft-Sealing Cutting Ring  
Type **FI-WDDS**
- Support Sleeve  
Type **FI-VH**
- STAUFF Form Ring  
Type **FI-AR**
- Union Nut  
Type **FI-M**
- 37° Flared Tube Fitting Set  
Type **FI-AB**

<sup>1</sup> Approximate dimension in assembled condition.  
<sup>2</sup> Weight excluding cutting ring and union nut.  
<sup>3</sup> Standard scope of delivery: Fitting body only.

Male stud acc. to DIN 3852-2 (Form C)  
 Port acc. to DIN 3852-2 (Form Z)  
 Suitable liquid / plastic sealant required.

Male threaded studs were designed for female threaded ports in components made of steel. For applications with components made of softer mating materials (e.g. Aluminium), the use of connectors with additionally rolled male threads is recommended.

Please contact STAUFF prior to the assembly for further information.

Series	Tube OD (mm/in)	PN (PB) (bar/psi)	Dimensions (mm/in)	Thread	T	D2	i	L	L1 <sup>1</sup>	L2	S1	S2	Weight (kg/lbs) ca. per 100 <sup>2</sup>	Ordering Codes <sup>3</sup>
LL	4	100	R 1/8 keg.	3	8	20	26	16	10	10	0,77		FI-GE-04LLRk-W3	
	.16	1450	R 1/8 keg.	.12	.31	.79	1.02	.63	.39	.39	1.70		FI-GE-06LLRk-W3	
	6	100	R 1/8 keg.	4,5	8	20	26	14,5	11	12	0,79		FI-GE-08LLRk-W3	
	.24	1450	R 1/8 keg.	.18	.31	.79	1.02	.57	.43	.47	1.75		FI-GE-08LLR1/4k-W3	
	8	100	R 1/8 keg.	4,5	8	22	28	16,5	12	14	1,08		FI-GE-10LLRk-W3	
	.31	1450	R 1/8 keg.	.18	.31	.87	1.10	.65	.47	.55	2.38		FI-GE-10LLR1/4k-W3	
	8	100	R 1/4 keg.	6	12	26	32	20,5	14	14	1,71		FI-GE-10LLRk-W3	
	.31	1450	R 1/4 keg.	.24	.47	1.02	1.26	.81	.55	.55	3.77		FI-GE-10LLR1/4k-W3	
	10	100	R 1/4 keg.	8	12	26	32	20,5	14	17	2,70		FI-GE-10LLRk-W3	
	.39	1450	R 1/4 keg.	.31	.47	1.02	1.26	.81	.55	.67	5.94		FI-GE-10LLR1/4k-W3	
	L	6	315	R 1/8 keg.	4	8	22	30	15	12	14	1,11		FI-GE-06LRk-W3
		.24	4568	R 1/8 keg.	.16	.31	.87	1.18	.59	.47	.55	2.43		FI-GE-06LR1/4k-W3
6		315	R 1/4 keg.	4	12	27	35	20	14	14	1,99		FI-GE-06LR1/4k-W3	
.24		4568	R 1/4 keg.	.16	.47	1.06	1.38	.79	.55	.55	4.37		FI-GE-06LR3/8k-W3	
6		315	R 3/8 keg.	4	12	28	36	21	19	14	2,80		FI-GE-06LR3/8k-W3	
.24		4568	R 3/8 keg.	.16	.47	1.10	1.42	.83	.75	.55	6.17		FI-GE-06LR1/2k-W3	
6		315	R 1/2 keg.	4	14	30	38	23	22	14	5,19		FI-GE-06LR1/2k-W3	
.24		4568	R 1/2 keg.	.16	.55	1.18	1.50	.91	.87	.55	11.42		FI-GE-08LR1/8k-W3	
8		315	R 1/8 keg.	4	8	25	33	18	14	17	1,78		FI-GE-08LR1/8k-W3	
.31		4568	R 1/8 keg.	.16	.31	.98	1.30	.71	.55	.67	3.92		FI-GE-08LRk-W3	
8		315	R 1/4 keg.	6	12	27	35	20	14	17	1,88		FI-GE-08LRk-W3	
.31		4568	R 1/4 keg.	.24	.47	1.06	1.38	.79	.55	.67	4.13		FI-GE-08LR3/8k-W3	
8		315	R 3/8 keg.	6	12	28	36	21	19	17	3,44		FI-GE-08LR3/8k-W3	
.31		4568	R 3/8 keg.	.24	.47	1.10	1.42	.83	.75	.67	7.58		FI-GE-08LR1/2k-W3	
8		315	R 1/2 keg.	6	14	30	38	23	24	17	5,02		FI-GE-08LR1/2k-W3	
.31		4568	R 1/2 keg.	.24	.55	1.18	1.50	.91	.94	.67	11.04		FI-GE-10LR1/8k-W3	
10		315	R 1/8 keg.	4	8	24	32	17	17	19	1,97		FI-GE-10LR1/8k-W3	
.39		4568	R 1/8 keg.	.16	.31	.94	1.26	.67	.67	.75	4.33		FI-GE-10LRk-W3	
10		315	R 1/4 keg.	7	12	28	36	21	17	19	2,28		FI-GE-10LR3/8k-W3	
.39		4568	R 1/4 keg.	.28	.47	1.10	1.42	.83	.67	.75	5.02		FI-GE-10LR3/8k-W3	
10		315	R 3/8 keg.	8	12	29	37	22	19	19	3,13		FI-GE-10LR1/2k-W3	
.39		4568	R 3/8 keg.	.31	.47	1.14	1.46	.87	.75	.75	6.88		FI-GE-10LR1/2k-W3	
12		315	R 1/2 keg.	8	14	30	38	23	24	19	1,22		FI-GE-12LR1/4k-W3	
.47		4568	R 1/2 keg.	.31	.55	1.18	1.50	.91	.94	.75	2.69		FI-GE-12LR1/4k-W3	
12		315	R 1/4 keg.	6	12	29	37	22	19	22	3,03		FI-GE-12LRk-W3	
.47		4568	R 1/4 keg.	.24	.47	1.14	1.46	.87	.75	.87	6.67		FI-GE-12LR1/2k-W3	
12		315	R 3/8 keg.	9	12	29	37	22	19	22	3,28		FI-GE-12LR1/2k-W3	
.47		4568	R 3/8 keg.	.35	.47	1.14	1.46	.87	.75	.87	7.22		FI-GE-15LR3/8k-W3	
12		315	R 1/2 keg.	10	14	31	39	24	22	22	5,02		FI-GE-15LR3/8k-W3	
.47		4568	R 1/2 keg.	.39	.55	1.22	1.54	.94	.87	.87	11.03		FI-GE-15LRk-W3	
15	315	R 3/8 keg.	9	12	30	38	23	24	27	5,06		FI-GE-15LR3/8k-W3		
.59	4568	R 3/8 keg.	.35	.47	1.18	1.50	.91	.94	1.06	11.13		FI-GE-15LRk-W3		
15	315	R 1/2 keg.	12	14	32	40	25	24	27	5,35		FI-GE-15LR3/4k-W3		
.59	4568	R 1/2 keg.	.47	.55	1.26	1.57	.98	.94	1.06	11.76		FI-GE-15LR3/4k-W3		
15	160	R 3/4 keg.	12	17	36	44	29	27	27	16,48		FI-GE-18LRk-W3		
.59	2320	R 3/4 keg.	.47	.67	1.42	1.73	1.14	1.06	1.06	36.26		FI-GE-18LR3/4k-W3		
18	315	R 1/2 keg.	14	14	33	42	25	27	32	6,42		FI-GE-22LR1/2k-W3		
.71	4568	R 1/2 keg.	.55	.55	1.30	1.65	1.00	1.06	1.26	14.13		FI-GE-22LR1/2k-W3		
22	PB160	R 1/2 keg.	12	14	38	47	30,5	32	36	10,20		FI-GE-22LRk-W3		
.87	PB2320	R 1/2 keg.	.47	.55	1.50	1.85	1.20	1.26	1.42	22.43		FI-GE-22LR3/4k-W3		
22	PB160	R 3/4 keg.	17	17	37	46	29,5	32	36	8,91		FI-GE-22LRk-W3		
.87	PB2320	R 3/4 keg.	.67	.67	1.46	1.81	1.16	1.26	1.42	19.61		FI-GE-28LR3/4k-W3		
28	PB160	R 3/4 keg.	18	16	38	47	31,5	41	41	14,59		FI-GE-28LRk-W3		
1.10	PB2320	R 3/4 keg.	.71	.63	1.50	1.85	1.24	1.61	1.61	32.10		FI-GE-28LR3/4k-W3		
28	PB160	R 1 keg.	23	18	42	51	34,5	41	41	16,49		FI-GE-28LRk-W3		
1.10	PB2320	R 1 keg.	.91	.71	1.65	2.01	1.36	1.61	1.61	36.28		FI-GE-35LRk-W3		
35	PB160	R 1 1/4 keg.	30	20	45	56	34,5	46	50	23,73		FI-GE-35LR3/4k-W3		
1.38	PB2320	R 1 1/4 keg.	1.18	.79	1.77	2.20	1.36	1.81	1.97	52.21		FI-GE-35LR3/4k-W3		
42	PB160	R 1 1/2 keg.	36	22	49	61	38	55	60	33,09		FI-GE-42LRk-W3		
1.65	PB2320	R 1 1/2 keg.	1.42	.87	1.93	2.40	1.50	2.17	2.36	72.81		FI-GE-42LR3/4k-W3		