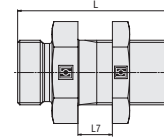
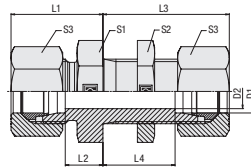
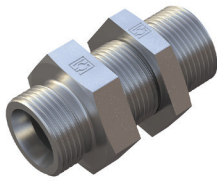


**Straight Bulkhead Fitting**  
Type FI-GS ▪ Series L / S



**Ordering Codes**

**\*FI-GS\*-10\*L\*-W3\*-MS**

- \* Straight Bulkhead Fitting **FI-GS**
  - \* Outside Tube Diameter D1 (in mm) **-10**
  - \* Series **L**  
Light Series **L**  
Heavy Series **S**
  - \* Material Code **-W3**  
Steel, zinc/nickel-plated
  - \* Assembling / Kitting **---**  
Fitting body only  
Fitting body supplied with hexagon lock nut **-SKM**  
Fitting body supplied with cutting rings and union nuts **-MS**  
Fitting body supplied with soft-sealing cutting rings and union nuts **-MSV**
- Please contact STAUFF for alternative materials and surface finishings.

**Connecting Parts**

- Cutting Ring  
Type **FI-DS**
- Soft-Sealing Cutting Ring  
Type **FI-WDDS**
- Support Sleeve  
Type **FI-VH**
- STAUFF Form Ring  
Type **FI-AR**
- Union Nut  
Type **FI-M**
- 37° Flared Tube Fitting Set  
Type **FI-AB**

**Spare Parts / Accessories**

- Hexagon Lock Nut  
Type **FI-SKM**

Series	Tube OD	PN	Dimensions											Weight (kg/lbs) ca. per 100 <sup>2</sup>	Ordering Codes <sup>3</sup>
	(mm/in) D1		(mm/in) D2	L	L1 <sup>1</sup>	L2	L3 <sup>1</sup>	L4	L7 min	L7 max	S1	S2	S3		
L	6	500	4	48	22	7	42	27	3	16	17	17	14	3,85	FI-GS-06L-W3-SKM
	.24	7250	.16	1.89	.87	.28	1.65	1.06	.12	.63	.67	.67	.55	8,48	
	8	500	6	49	23	8	42	27	3	16	19	19	17	4,93	FI-GS-08L-W3-SKM
	.31	7250	.24	1.93	.91	.31	1.65	1.06	.12	.63	.75	.75	.67	10,85	
	10	500	8	52	25	10	43	28	3	16	22	22	19	6,76	FI-GS-10L-W3-SKM
	.39	7250	.31	2.05	.98	.39	1.69	1.10	.12	.63	.87	.87	.75	14,87	
	12	400	10	53	25	10	44	29	3	16	24	24	22	7,81	FI-GS-12L-W3-SKM
	.47	5800	.39	2.09	.98	.39	1.73	1.14	.12	.63	.94	.94	.87	17,18	
	15	400	12	57	27	12	46	31	3	16	27	30	27	12,89	FI-GS-15L-W3-SKM
	.59	5800	.47	2.24	1.06	.47	1.81	1.22	.12	.63	1.06	1.18	1.06	28,37	
	18	400	15	61	30	13,5	49	32,5	3	16	32	36	32	19,87	FI-GS-18L-W3-SKM
	.71	5800	.59	2.40	1.18	.53	1.93	1.28	.12	.63	1.26	1.42	1.26	43,72	
	22	250	19	66	33	16,5	51	34,5	4	16	36	41	36	25,19	FI-GS-22L-W3-SKM
	.87	3625	.75	2.60	1.30	.65	2.01	1.36	.16	.63	1.42	1.61	1.42	55,42	
	28	250	24	69	35	18,5	52	35,5	4	16	41	46	41	34,12	FI-GS-28L-W3-SKM
	1.10	3625	.94	2.72	1.38	.73	2.05	1.40	.16	.63	1.61	1.81	1.61	75,07	
	35	250	30	76	40	18,5	58	36,5	4	16	50	55	50	55,40	FI-GS-35L-W3-SKM
	1.38	3625	1.18	2.99	1.57	.73	2.28	1.44	.16	.63	1.97	2.17	1.97	121,88	
	42	250	36	77	42	19	59	36	4	16	60	65	60	75,30	FI-GS-42L-W3-SKM
1.65	3625	1.42	3.03	1.65	.75	2.32	1.42	.16	.63	2.36	2.56	2.36	165,66		
S	6	800	4	55	27	12	44	29	3	16	19	19	17	6,50	FI-GS-06S-W3-SKM
	.24	11600	.16	2.17	1.06	.47	1.73	1.14	.12	.63	.75	.75	.67	14,30	
	8	800	5	56	28	13	44	29	3	16	22	22	19	8,84	FI-GS-08S-W3-SKM
	.31	11600	.20	2.20	1.10	.51	1.73	1.14	.12	.63	.87	.87	.75	19,44	
	10	800	7	59	31	14,5	46	29,5	3	16	24	24	22	11,18	FI-GS-10S-W3-SKM
	.39	11600	.28	2.32	1.22	.57	1.81	1.16	.12	.63	.94	.94	.87	24,59	
	12	630	8	60	31	14,5	47	30,5	3	16	27	27	24	14,00	FI-GS-12S-W3-SKM
	.47	9135	.31	2.36	1.22	.57	1.85	1.20	.12	.63	1.06	1.06	.94	30,80	
	14	630	10	65	35	17	50	32	3	16	30	30	27	18,17	FI-GS-14S-W3-SKM
	.55	9135	.39	2.56	1.38	.67	1.97	1.26	.12	.63	1.18	1.18	1.06	39,97	
	16	630	12	65	35	16,5	50	31,5	3	16	32	32	30	20,12	FI-GS-16S-W3-SKM
	.63	9135	.47	2.56	1.38	.65	1.97	1.24	.12	.63	1.26	1.26	1.18	44,27	
	20	400	16	72	39	17,5	55	33,5	4	16	41	41	36	34,45	FI-GS-20S-W3-SKM
	.79	5800	.63	2.83	1.54	.69	2.17	1.32	.16	.63	1.61	1.61	1.42	75,79	
	25	400	20	79	44	20	59	35	4	16	46	46	46	49,56	FI-GS-25S-W3-SKM
.98	5800	.79	3.11	1.73	.79	2.32	1.38	.16	.63	1.81	1.81	1.81	109,04		
30	400	25	86	48	21,5	64	37,5	4	16	50	50	50	64,90	FI-GS-30S-W3-SKM	
1.18	5800	.98	3.39	1.89	.85	2.52	1.48	.16	.63	1.97	1.97	1.97	142,78		
38	400	32	91	53	22	68	37	4	16	65	65	60	108,30	FI-GS-38S-W3-SKM	
1.50	5800	1.26	3.58	2.09	.87	2.68	1.46	.16	.63	2.56	2.56	2.36	238,26		

<sup>1</sup> Approximate dimension in assembled condition.  
<sup>2</sup> Weight excluding lock nut, cutting rings and union nuts.  
<sup>3</sup> Standard scope of delivery: Fitting body with hexagon lock nut.