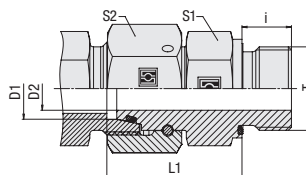
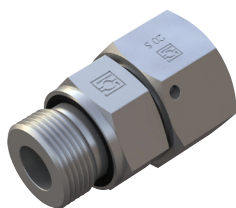


**Straight Male Stud Fitting with 24° Taper / O-Ring**  
**Type FI-EGED-...-R-WD ▪ Series L / S**



**Whitworth Parallel Pipe Thread (BSPP)**

**Profile Sealing Ring**

**Ordering Codes**

**\*FI-EGED\*-10\*L\*R\*-WD\*-B\*-W3\*-DKO**

\* Straight Male Stud Fitting with 24° Taper / O-Ring (DKO) **FI-EGED**

\* Outside Tube Diameter D1 (in mm) **-10**

\* Series Light Series **L**  
 Heavy Series **S**

\* Thread Type Whitworth Parallel Pipe Thread (BSPP) **R**

If required, please indicate special sizes, e.g. R3/8!

\* Seal Type Profile Sealing Ring **-WD**

\* Seal Material NBR (Buna-N®) **-B**  
 FKM (Viton®) **-V**

\* Material Code Male Stud: NBR (Buna-N®) **-BV**  
 24° Taper: FKM (Viton®) **-E**

\* Material Code Steel, zinc/nickel-plated **-W3**

Please contact STAUFF for alternative materials and surface finishings.

\* Assembling / Kitting Fitting body supplied with swivel nut and O-ring **-DKO**

**Spare Parts / Accessories**



O-Ring  
 Type **O-RING**



Profile Sealing Ring  
 Type **WDG**

Series	Tube OD (mm/in) D1	PN (bar/psi)	Dimensions (mm/in)						Torque (N·m/ft·lb) Thread T	Weight (kg/lbs) ca. per 100	Ordering Codes
			Thread T	D2	i	L1	S1	S2			
L	6	500	G 1/8	2,5	8	24,5	14	14	18	3,74	FI-EGED-06LR-WD-B-W3-DKO
	.24	7250		.10	.31	.96	.55	.55	13.3	8.22	
	8	500	G 1/4	4	12	29,5	19	17	35	5,23	FI-EGED-08LR-WD-B-W3-DKO
	.31	7250		.16	.47	1.16	.75	.67	25.9	11.50	
	10	500	G 1/4	6	12	27,5	19	19	35	5,68	FI-EGED-10LR-WD-B-W3-DKO
	.39	7250		.24	.47	1.08	.75	.75	25.9	12.49	
	12	400	G 3/8	8	12	34	22	22	70	9,78	FI-EGED-12LR-WD-B-W3-DKO
	.47	5800		.31	.47	1.34	.87	.87	51.8	21.52	
	12	400	G 1/2	8	14	29,5	27	22	90	11,71	FI-EGED-12LR1/2-WD-B-W3-DKO
	.47	5800		.31	.55	1.16	1.06	.87	66.6	25.76	
	15	400	G 1/2	10	14	32	27	27	90	13,70	FI-EGED-15LR-WD-B-W3-DKO
	.59	5800		.39	.55	1.26	1.06	1.06	66.6	30.14	
	18	400	G 1/2	13	14	31,5	27	32	90	14,86	FI-EGED-18LR-WD-B-W3-DKO
	.71	5800		.51	.55	1.24	1.06	1.26	66.6	32.69	
	22	250	G 3/4	17	16	32,5	32	36	180	20,98	FI-EGED-22LR-WD-B-W3-DKO
	.87	3625		.67	.63	1.28	1.42	1.42	133.2	46.15	
	28	250	G 1	22	18	35	41	41	310	22,78	FI-EGED-28LR-WD-B-W3-DKO
	1.10	3625		.87	.71	1.38	1.61	1.61	229.4	50.12	
35	250	G 1 1/4	28	20	42,5	50	50	450	51,00	FI-EGED-35LR-WD-B-W3-DKO	
1.38	3625		1.10	.79	1.67	1.97	1.97	333.0	112.20		
42	250	G 1 1/2	34	22	46,5	55	60	540	68,60	FI-EGED-42LR-WD-B-W3-DKO	
1.65	3625		1.34	.87	1.83	2.17	2.36	399.6	150.92		
S	6	800	G 1/4	2,5	12	27	19	17	55	5,55	FI-EGED-06SR-WD-B-W3-DKO
	.24	11600		.10	.47	1.06	.75	.67	40.7	12.21	
	8	800	G 1/4	4	12	29,5	19	19	55	6,52	FI-EGED-08SR-WD-B-W3-DKO
	.31	11600		.16	.47	1.16	.75	.75	40.7	14.34	
	10	800	G 3/8	6	12	32	22	22	80	9,63	FI-EGED-10SR-WD-B-W3-DKO
	.39	11600		.24	.47	1.26	.87	.87	59.2	21.19	
	12	630	G 3/8	8	12	34	22	24	80	7,03	FI-EGED-12SR-WD-B-W3-DKO
	.47	9135		.31	.47	1.34	.87	.94	59.2	15.46	
	14	630	G 1/2	9	14	37	27	27	115	14,39	FI-EGED-14SR-WD-B-W3-DKO
	.55	9135		.35	.55	1.46	1.06	1.06	85.1	31.67	
	16	630	G 1/2	11	14	37	27	30	115	17,03	FI-EGED-16SR-WD-B-W3-DKO
	.63	9135		.43	.55	1.46	1.06	1.18	85.1	37.46	
	20	400	G 3/4	14	16	43	32	36	180	27,34	FI-EGED-20SR-WD-B-W3-DKO
	.79	5800		.55	.63	1.69	1.26	1.42	133.2	60.15	
	25	400	G 1	18	18	48	41	46	310	50,20	FI-EGED-25SR-WD-B-W3-DKO
	.98	5800		.71	.71	1.89	1.61	1.81	229.4	110.44	
	30	400	G 1 1/4	23	20	51	50	50	450	70,40	FI-EGED-30SR-WD-B-W3-DKO
	1.18	5800		.91	.79	2.01	1.97	1.97	333.0	154.88	
38	400	G 1 1/2	30	22	60	55	60	540	93,50	FI-EGED-38SR-WD-B-W3-DKO	
1.50	5800		1.18	.87	2.36	2.17	2.36	399.6	205.70		

Standard seal material is NBR (Buna-N®).

Male stud acc. to ISO 1179-2 (Type E)  
 Port acc. to ISO 1179-1

Male threaded studs were designed for female threaded ports in components made of steel. For applications with components made of softer mating materials (e.g. Aluminium), the use of connectors with additionally rolled male threads is recommended.

Torque recommendations for Steel mating material.

Please contact STAUFF prior to the assembly for further information.