

HIGH-LOW PRESSURE BLOCK

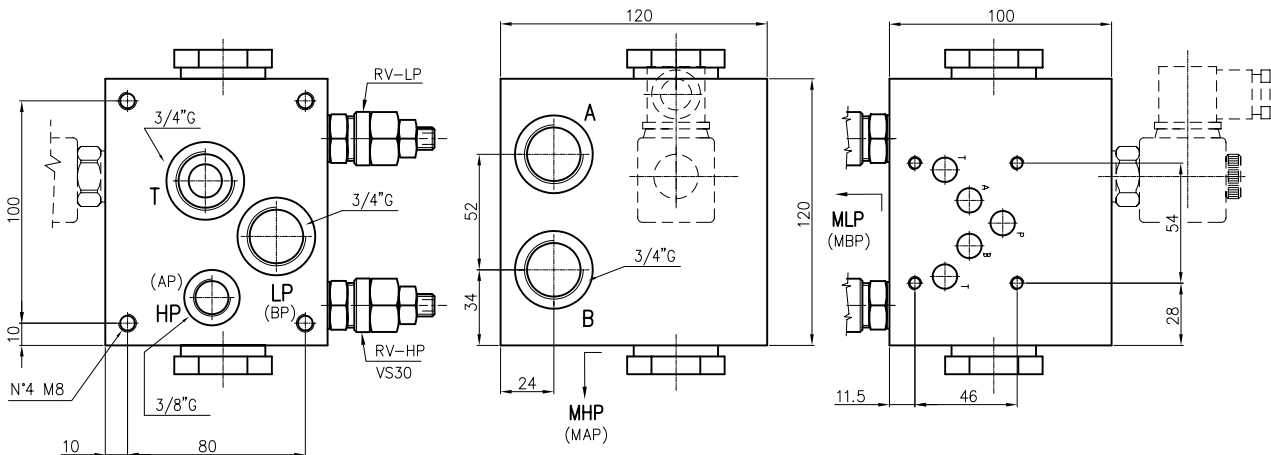
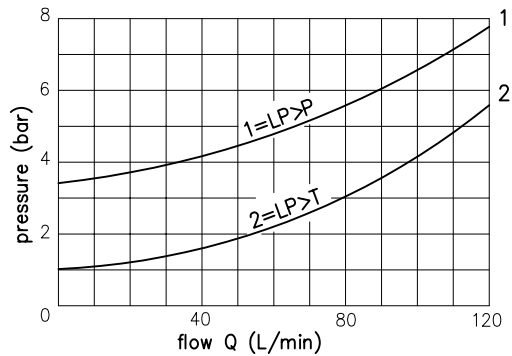
TYPE ET215..../....



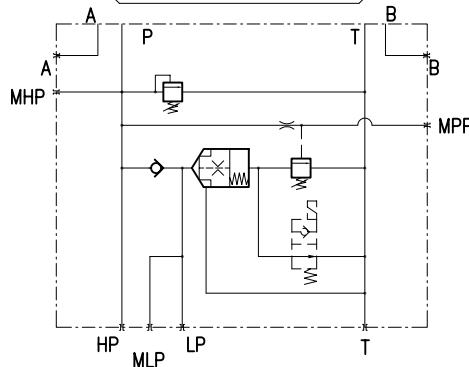
High/low pressure plate with port CETOP 5.
 A-B side 3/4" G
 HP (AP) 3/8" G, LP (BP) 3/4" G, rear.
 T rear 3/4" G

TECHNICAL SPECIFICATIONS

Nominal flow:	— 120 l/min.
Max pressure:	— 350 bar
Oil viscosity:	— 2,8–380 cSt
Oil temperature:	— -10° +80° (°C)
Oil type:	— mineral HL–HLP DIN 51524
Filtering:	— 19/15 ISO 4466 (25micron)
Gaskets:	— Polyurethane and NBR
Body material:	— GG 25
Weight :	— 10 Kg



HYDRAULIC SCHEME TYPE 1



Ordering code: **ET 2 1 5 / * *** — Low pressure setting (adjust by screw)

Eurofluid =
 High/low
 pressure plate

0 F = 5–50 bar
 1 F = 30–100 bar

Version port CETOP = 2

High pressure setting (adjust by screw)

2 F = 50–210 bar
 3 F = 100–350 bar

Version excluding low pressure = 1

CETOP 5

- REMARKS: 1) All plates have pre-arrangement for electric venting or replacement plug (see on page 53)
 2) See on page 50 for technical specifications of VS30 valve