

SUBPLATE TYPE ES710P
GRUNDPLATTE TYP ES710P

Subplate with A-B-P-T on rear = 1" G

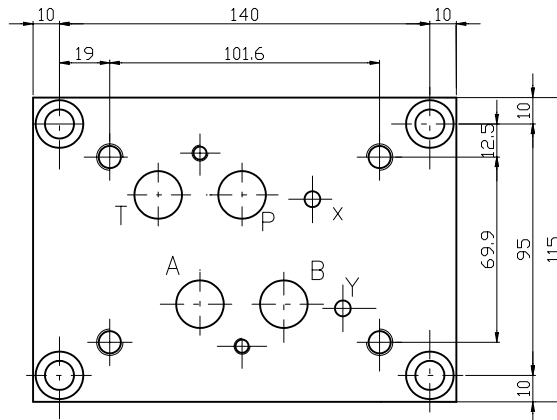
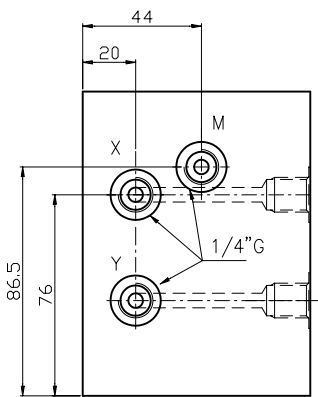
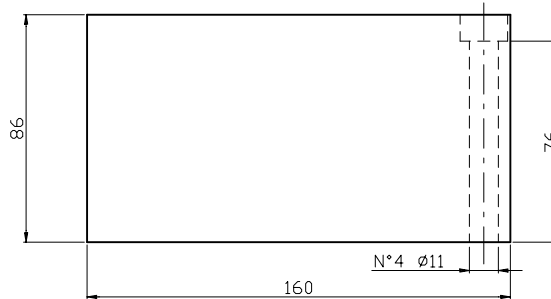
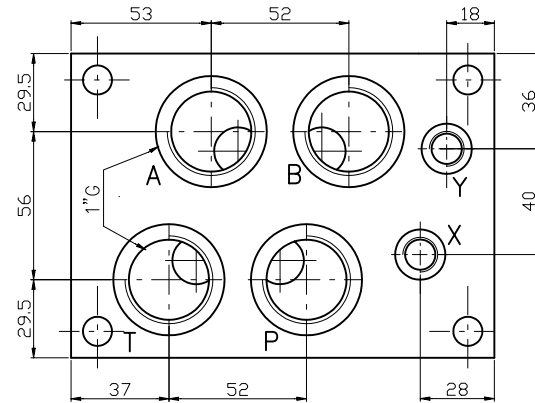
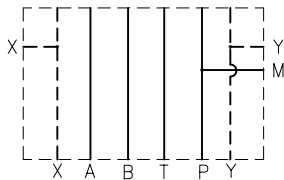
Weight = 10 Kg

Grundplatte, A-B-P-T ruckseitig = 1" G

Gewicht = 10 Kg

Type/Typ: P

Hydr. symbol
 Symbol



Ordering code
 Bestell-Code

ES 7 10 P

subplate = S
 Grundplatte

CETOP 7

1" G = 10

P = A - B - P - T on rear / ruckseitig

CETOP 7
NG 16