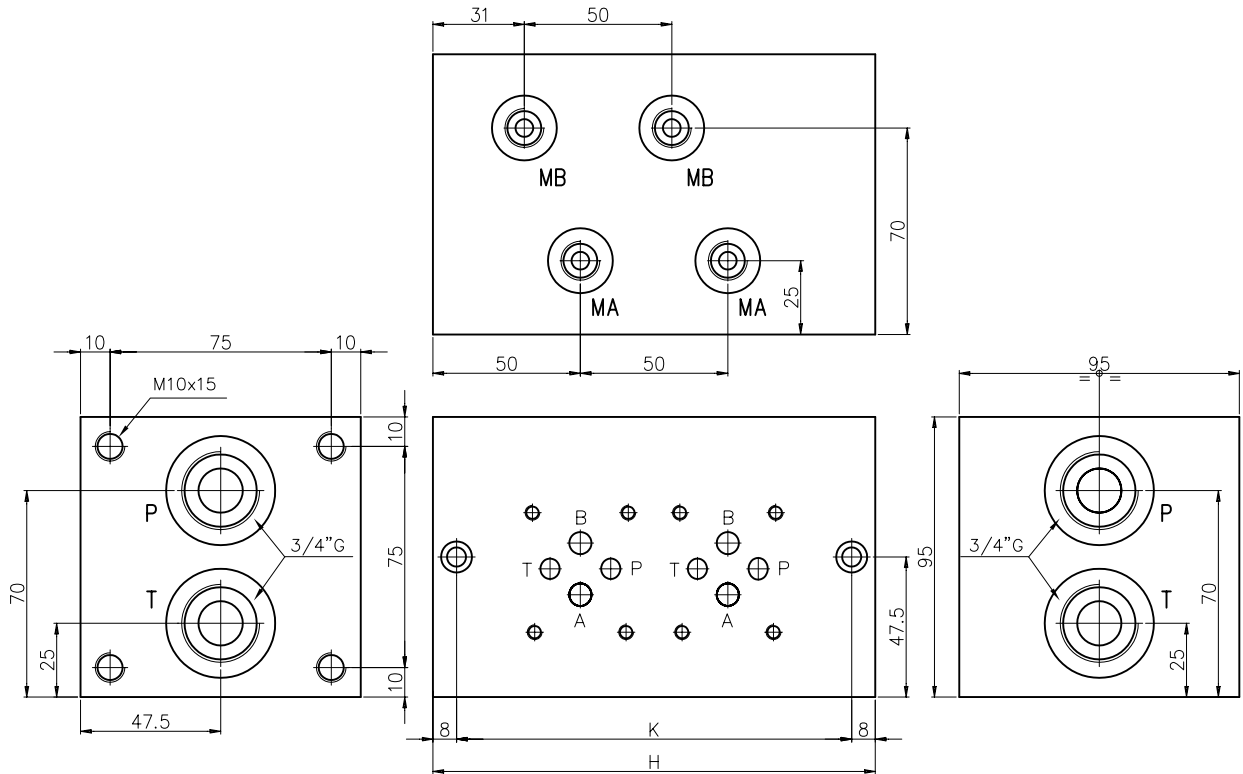


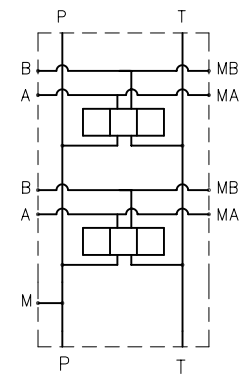
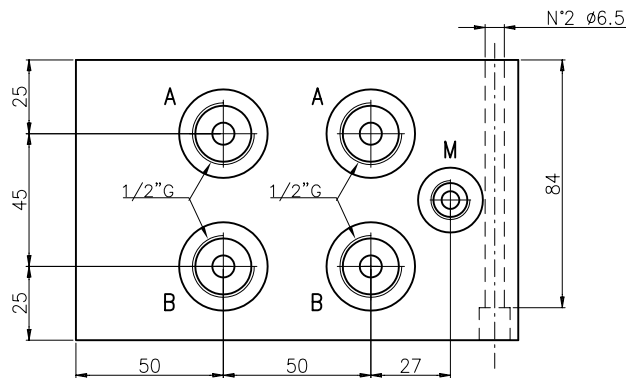
MONOBLOCK TYPE EM253/....YM
MONOBLOCK TYP EM253/....YM

Monoblock with ports A-B = 1/2" G on the side, P-T = 3/4" G and with manometer ports 1/4" G on A-B.

Monoblock mit seitlichen Anschlüssen A-B = 1/2" G, P-T = 3/4" G und mit Messanschluss R 1/4" G in A-B



N° Elem.	H	K	(Kg)
1	100	84	6.3
2	150	134	9.6
3	200	184	12.9
4	250	234	16.2
5	300	284	19.5
6	350	334	22.8
7	400	384	26.1
8	450	434	29.3
9	500	484	32.6
10	550	534	35.9



Symbol parallel conn.

Symbol Parallel Schalt.

Ordering code
Bestell-Code

EM 25 3 / * Y M

EUROFLUID
Monoblock=

M

only on side =
nur seitlich

25

CETOP 3

M = with manometer ports
mit Messanschluss

Y = without RV / ohne DBV

1-2-...10 = N. of elements
Anzahl Elemente