

**MONOBLOCK TYPE EM105/...**

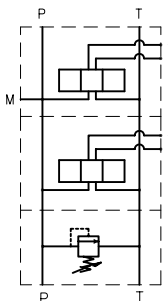
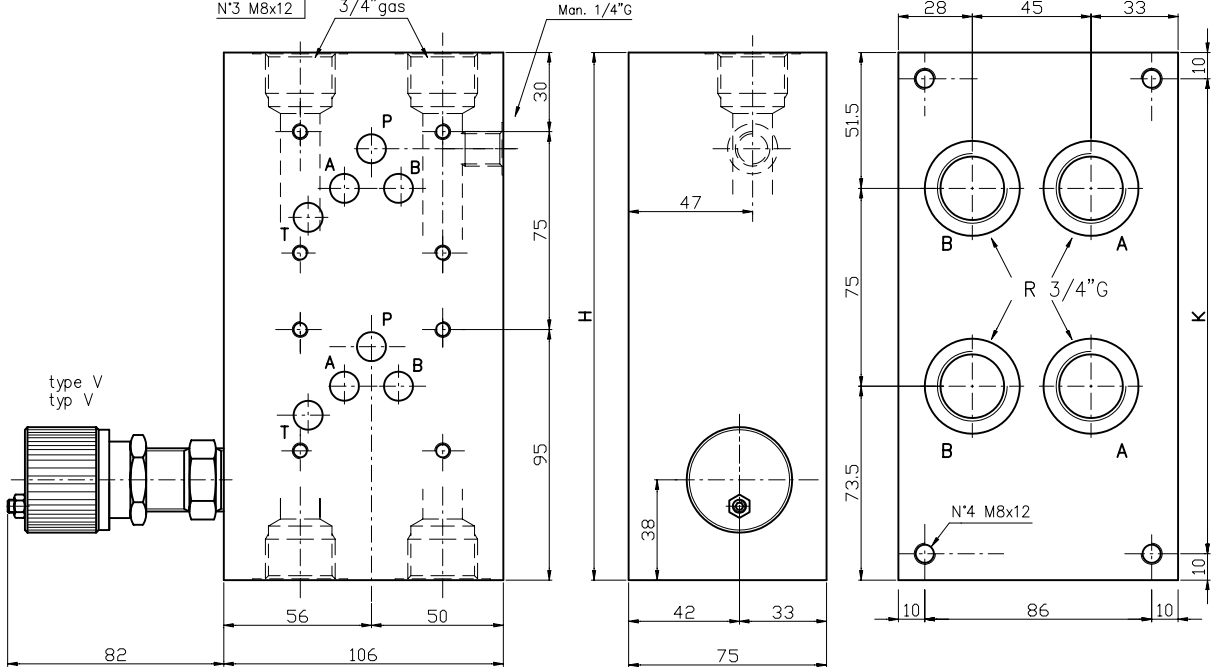
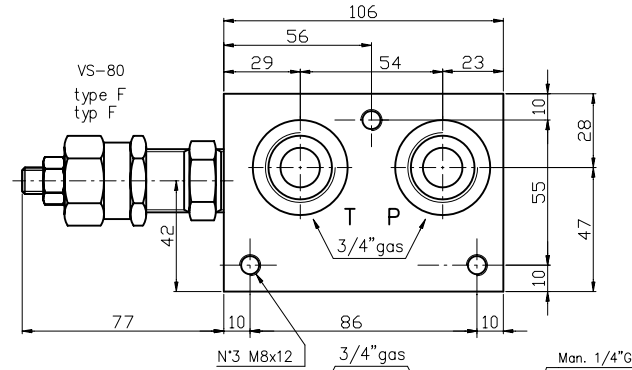
**MONOBLOCK TYP EM105/...**

**CETOP 5  
NG 10**

Monoblock with ports A-B on rear = 3/4"G, P-T = 3/4"G.  
With/without pressure relief valve.(RV)

Monoblock mit rueckseitigen Anschluesse A-B = 3/4"G, P-T = 3/4"G.  
Mit/ohne Druckbegrenzungsventil.(DBV)

N° Staz.	H	K	(Kg)
1	125	105	7
2	200	180	11
3	275	255	15
4	350	330	19
5	425	405	23
6	500	480	26
7	575	555	29



Symbol  
parallel conn.  
Parallel Schalt.

Ordering code  
Bestell-Code

EM 10 5 / \* \* \* \* \*

Setting/Einstellung  
F = by key / Schlussverstellung  
V = Handwheel/Aluhandrad

Spring type/Feder Typ  
1 = 5-60 bar  
2 = 35-120 bar  
3 = 80-270 bar

Monoblock = M  
ports A-B on rear = 10  
ruecks. Anschl A-B

CETOP 5

Z = prearranged for RV  
mit DBV Bohrung  
T = with plugged RV seat  
mit verstopften DBV Bohrung  
X = with RV included  
einschliesslich DBV

N. Elem. = 1-2-3-4-5-6  
Anzahl Elemente

R 3/4"G = 34