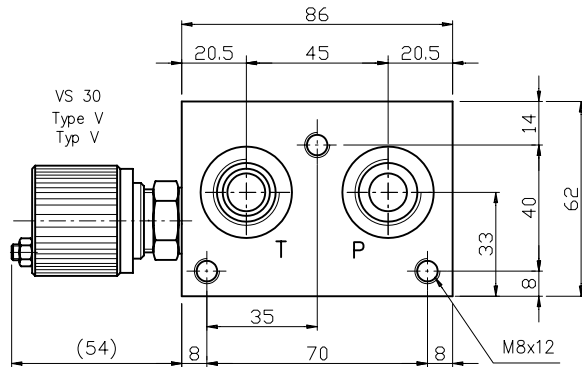


MONOBLOCK TYPE EM103/..P..

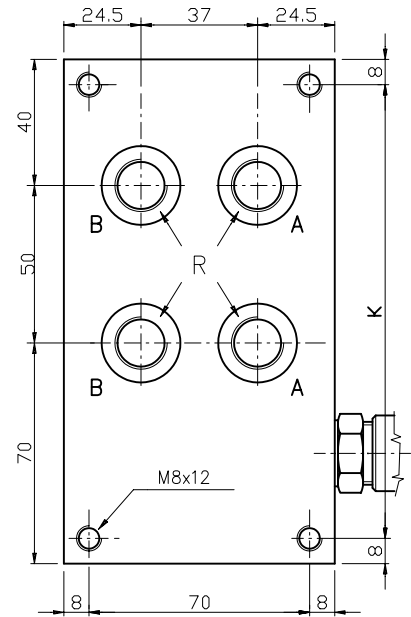
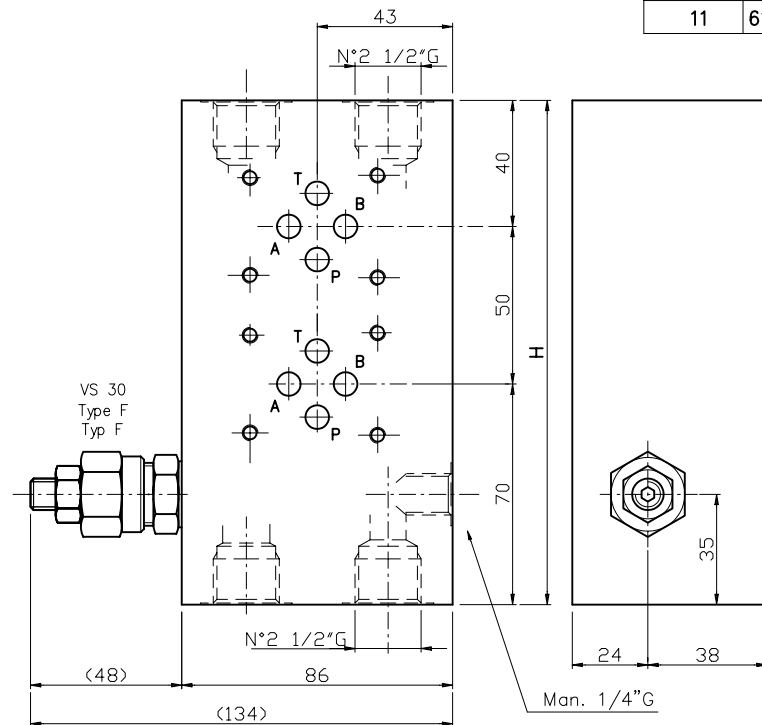
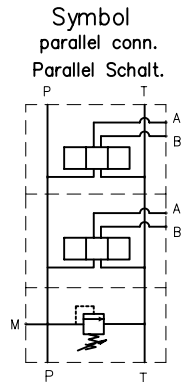
MONOBLOCK TYP EM103/..P..

Monoblock with rear ports A-B = 3/8" G or 1/2" G, P-T = 1/2" G
Parallel connection. With/without relief valve. (RV)

Monoblock mit rueckseitige Anschl 3/8" G oder 1/2" G, P-T = 1/2" G
Parallel Schaltung. Mit/ohne Druckbegrenzungsventil. (DBV)



N° Elem.	H	K	(Kg)
1	110	94	3.4
2	160	144	4.8
3	210	194	6.2
4	260	244	7.6
5	310	294	9
6	360	344	10.4
7	410	394	11.8
8	460	444	13.2
9	510	494	14.6
10	560	544	16
11	610	594	17.4



Ordering code

Bestell-Code: **EM 10 3 / * * P * * *** — Setting / Einstellung

EUROFLUID
monoblock = M

rear ports = 10
ruecks. Anschl.

CETOP 3

N. of elements 1, 2, ..., 11.
Anzahl Elemente

R 3/8" G = 38
R 1/2" G = 12

rear ports = P
rueckseitige Anschl.

F = by key / Schlussverstellung

V = handwheel/Aluhandrad

P = plastic knob/Kunststoff-
handrad

Spring type / Feder Type

0 = 5-50 bar 2 = 50-210 bar

1 = 30-100 bar 3 = 100-350 bar

Y = without RV seat
ohne DBV Bohrung

Z = prearranged for RV
mit DBV Bohrung

T = with plugged RV seat
mit verstopften DBV Bohrung

X = with RV included
einschliesslich DBV

NOTES : See page 50 for technical characteristics of RV
BEMERKUNG : Siehe techn. Daten des DBV auf Seite 50