



# HYDRO WEST

**Hydro West B.V.**

De Factorij 12

1689 AL Zwaag

+31(0)229-263441

info@hydrowest.nl

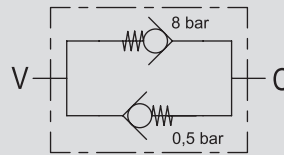
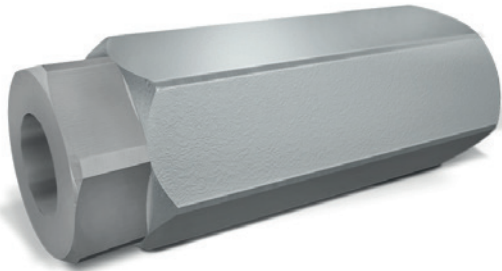
www.hydrowest.nl

## VALVOLE BIDIREZIONALI

TIPO / TYPE

### VRC

SCHEMA IDRAULICO  
HYDRAULIC DIAGRAM



## BIDIRECTIONAL CHECK VALVES

### IMPIEGO:

Valvole che consentono il controllo del flusso libero in entrambe le direzioni a diverse tarature.

### USE AND OPERATION:

In the bidirectional check valves flow is controlled in both directions at different pressure setting.

### MATERIALI E CARATTERISTICHE:

Corpo: acciaio zincato

Componenti interni: acciaio temprato termicamente e rettificato

### MATERIALS AND FEATURES:

Body: zinc plated steel

Internal parts: hardened and ground steel

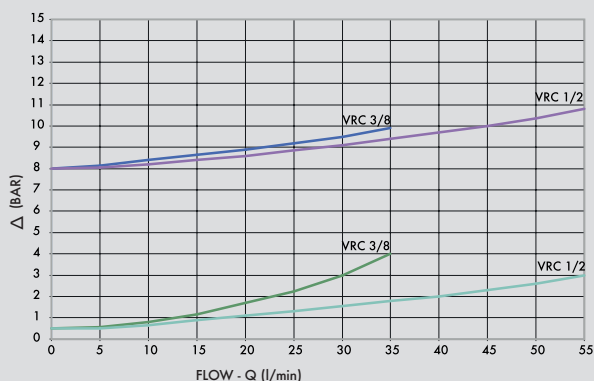
### MONTAGGIO:

Collegare C o V all'alimentazione a seconda del tipo di regolazione del flusso che si vuole ottenere.

### APPLICATIONS:

Connect V or C to the pressure flow according to the adjustment to be obtain.

### PERDITE DI CARICO PRESSURE DROPS CURVE



Temperatura olio: 50°C - Viscosità olio: 30 cSt

Oil temperature: 50°C - Oil viscosity: 30 cSt



# HYDRO WEST

**Hydro West B.V.**

De Factorij 12

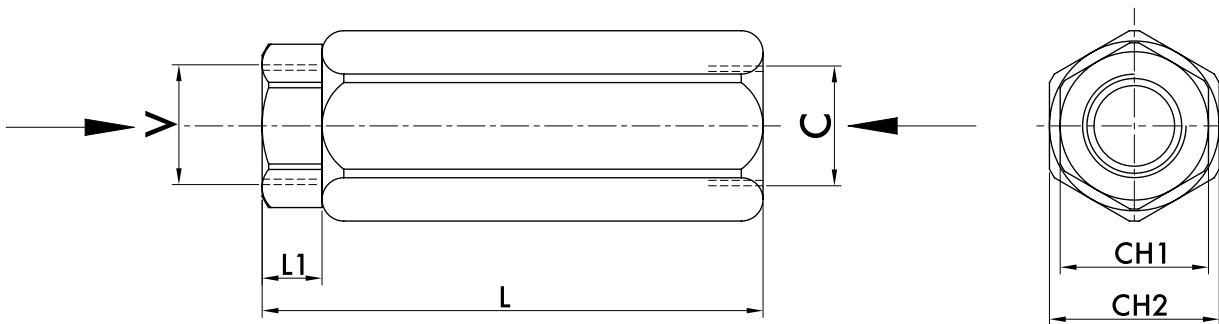
1689 AL Zwaag

+31(0)229-263441

@ info@hydrowest.nl

www.hydrowest.nl

CODICE CODE	SIGLA TYPE	PORTATA MAX MAX FLOW Lt. / min	PRESSIONE MAX MAX PRESSURE Bar	PRESS. APERTURA CRACKING PRESSURE V - C Bar	PRESS. APERTURA CRACKING PRESSURE C - V Bar
<b>V0606</b>	VRC 3/8"	35	350	0,5	8
<b>V0616</b>	VRC 1/2"	55	350	0,5	8



CODICE CODE	SIGLA TYPE	V - C GAS	L mm	L1 mm	CH1 mm	CH2 mm	PESO WEIGHT kg
<b>V0606</b>	VRC 3/8"	G3/8"	100	11	27	30	0,448
<b>V0616</b>	VRC 1/2"	G1/2"	118	26	27	30	0,448